

Keys Holidays A selection of seaside and country properties for self catering holidays in North Norfolk
Tel: 01263 823010
info@keysholidays.co.uk

"We look forward to welcoming you to this lovely part of North Norfolk"

www.keysholidays.co.uk

Nottinghamshire in FOCUS

Coach Style

PROVIDING THE BEST BRITISH & EUROPEAN COACH ADVENTURES

SECURE YOUR PLACE NOW FROM JUST £30

CALL US ON 08456 665544
OR VISIT WWW.SKILLS.CO.UK

Lines open 9am - 5pm (Mon - Sat) 9am - 5pm (Sun)
*Calls cost 3p per minute plus your network's standard access charge
Terms and conditions apply. Visit www.skills.co.uk/terms for more information

Issue 249

f nottsinfocus

#nottsinfocus

www.nottsinfocus.co.uk

28 Nov - 4 Dec 2017 | 20p

(Where Sold)



STORAGE 4U

Residential & Business Storage

HOUSEHOLD & BUSINESS STORAGE

Storage for:

- 📌 Moving Home
- 📌 Student Storage
- 📌 Bulk Storage
- 📌 Decluttering



Opening Hours: Monday - Friday 8am - 6pm | Saturday 9am - 5pm | Sunday By appointment

Email: info@st4u.co.uk www.storage4unottingham.co.uk

Billy Steps Up To Fulfil a Promise



Billy's courage and strength following the Formula 4 accident has inspired thousands of people and he continues to keep busy and look toward the future.

He said: "I've been busy had another couple of hospital checks, doing physio, learning to walk, had an F1 weekend with Lewis Hamilton that was cool, I've been busy."

"Next year I'm hopefully going to be back in a race car competing again, learning to walk and racing hopefully just as well."

Teenage racing driver Billy Monger has fulfilled a remarkable promise to return and walk back on to the hospital ward he left in a wheelchair just months ago. The 18-year-old was badly injured in a racing accident and was airlifted to the East Midlands Trauma Centre at Queen's Medical Centre in Nottingham where despite the best efforts of specialist teams he had to have both his legs amputated. He left the ward in May saying when he

returned he'd be out of his wheelchair. He was good to his word when he came back to see staff and present them with a special thank you gift.

Billy said: "That was the goal when I came back - to be able to walk up along the ward and say hello to everyone on my own two feet which I managed to do which is good!"

"It was awesome to come back on the ward and see the team. It's been six months which is a long time but when you come back on the ward it kind of feels like it was yesterday that I was in here wheeling around in the wheelchair causing havoc. It's good to see everyone."

Tony Westbrook, Consultant Orthopaedic Surgeon at Nottingham University Hospitals NHS Trust, and Billy's named

Consultant during his care, said it was brilliant to see him back and that his visit would lift staff and other patients on the trauma unit.

He said: "It's absolutely fantastic to see Billy back on the ward he's an amazing young man and he's done incredibly well. To see him walking on his new prosthetic legs with a smile on his face is brilliant." Billy was back in Nottingham as a guest of honour at the NUHons Awards, the Trust's annual staff awards event. He nominated staff involved in his care and was invited to join the team on the night. He said: "The care I had when I had when I was in here was unreal. There was a special someone that deserved to get the nomination and I'm hoping she can come out on top tonight."

this weekend -

NOTTINGHAM RACECOURSE NG2 4BE

£3 PER PERSON UNDER 16s FREE FREE PARKING

Christmas FOOD & GIFT FAIR

SAT 2nd & SUN 3rd DECEMBER 10am - 5pm

FOOD, DRINK & GIFT STALLS PERFECT FOR CHRISTMAS SHOPPING & STREET FOOD

Cake • Cheese • Gifts • Jewellery • Cards • Pies
Real Ale • Cocktails • Books • Homeware
Accessories • Gin • Illustrations • Mulled Wine
Decorations • Fashion and lots more....

PRESENTED BY ... WWW.DERBYSHIREFOODANDDRINKFAIR.CO.UK
INFO@DERBYSHIREFOODANDDRINKFAIR.CO.UK // 01332 830444

Price 20p

ISSN 2052-2606



9 772052 260008

49 >

Information

Visit us Online
nottsinfocus.co.uk

Follow us on Twitter
@nottsinfocus

Like us on Facebook
/nottsinfocus

Follow us on Instagram
/nottsinfocus

69a Main Street, Burton
Joyce, Nottingham,
Nottinghamshire, NG14 5ED
Telephone: 01159313879
Email: sales@nottsinfocus.co.uk



Cadet Reunites Lost Dog Tag with Soldier's Family



Medal with 'Near East' Clasp.

He continued: "More digging revealed that the Medal and Clasp were awarded to Sapper Penfold for his service during Operation Musketeer in the final months of 1956, where he was supporting UK operations to stabilise and secure the area around the Suez Canal region." The investigation also highlighted that Longmoor Training Camp in Hampshire, where the ID tag was found, was in the late 1950s used by the Royal Engineers and that those deploying on Operation Musketeer were trained at this location before flying overseas to complete their deployment.

Ben said: "It's entirely possible that Sapper Penfold lost the dog tag on deployment training. After spending hours and hours searching, a friend of mine actually discovered the whereabouts of his family. Unfortunately, Sapper Penfold and his wife passed away in the early 2000s, but he was survived by his sisters, children and grandchildren who live in Brighton. So I arranged a visit to the sea-side town to return the tag."

Ben travelled to Brighton on 11 November to present Sapper Penfold's family the ID tag together with a replica of the serviceman's medal framed with an explanatory note for them to keep forever.

A Nottinghamshire Army Cadet went out of his way this summer to track down the relatives of a former soldier and return a military ID tag he stumbled across whilst taking part in his summer training camp.

Cadet Lance Corporal Ben Kirkham, from Nottinghamshire Army Cadet Force's (ACF) Worksop Detachment, didn't give a second thought to leaving the identity tag lying on the ground where he found it. Instead, he immediately picked it up and considered how

he would start his investigation to return the tag to its rightful owner.

Explaining that his search began online, Ben, aged 17, commented: "I initiated my search on Google by typing in the Army number and name shown on the tag. This immediately revealed the owner to be Sapper Don Penfold of the Royal Engineers."

Ben discovered that one of his medals had just been sold in a Bridlington shop this summer to a private collector. This was his General Service

SHERRIE HEWSON
BEN NICKLESS

BEN RICHARDS
ANDREW RYAN

Beauty AND THE Beast

THE SPELLBINDING PANTOMIME

SAT 9 DEC 2017 - SUN 14 JAN 2018

SUPPORTED LOCALLY BY **notts tv**

0115 989 5555
TRCH.CO.UK

THEATRE ROYAL ROYAL CONCERT HALL

ITA GROOMS
Dog Grooming in your own home

- City and Guilds in Dog/Cat Grooming
- City and Guilds Animal Care 2 x Merit Qualified

Hill's Registered Pet Nutrition

01949 842306 | 07711 564441
07544 400535
www.itagrooms.com

The Sewing Room

Offering a reliable clothing alterations service.
Ladies & Gents, Trousers, Dresses, Jackets etc
Call in and speak with our friendly alterations team

3rd floor, Armstrong mill,
Ilkeston DE7 5TT
0115 930 5290

Wild Bird

Ideal time to site new nesting boxes

Lots of Christmas gift ideas in stock now

Pop in and see us and help the wildlife to feed in the winter months ahead

HALL FARM
WILD BIRD FOOD SUPPLIES

The Grain Store, Wadnall Lane,
Weston, Newark, NG23 6SY
www.seedtofeed.co.uk
01636 821232

OPEN
Mon-Fri 7.30am - 5pm
Saturday 8am - 1pm

Community Funding Windfall Worth £250,000 Unveiled

Community groups across Nottinghamshire are being invited to bid for a share of £250,000 to help cut crime and keep people at risk of offending on the right path.

Nottinghamshire Police and Crime Commissioner Paddy Tipping has announced details of his Community Safety Fund for 2018/19 which will be invested into grassroots projects that help people stay safe and recover from their problems.

The PCC has vowed to prioritise the issue over the next 12 months alongside other crime and disorder problems which cause misery on Nottinghamshire communities and he is calling on local groups to help.

The Commissioner's Community Safety Fund is open to voluntary, charitable and third sector organisations whose goal is to make life better and safer for their community - including diversionary schemes which channel young people's energy into positive work.

Launching this year's fund, Paddy Tipping said: "We want to address some of the persistent issues which blight the lives of ordinary people. One of those is illegal off-road biking and we are working very closely with the force to support the enforcement work



put in place to tackle this problem.

"My Community Safety Fund is available to groups or organisations which want to help the police prevent crime with positive and proactive activities that create a real sense of wellbeing for their community and engage people in productive work."

The Commissioner has outlined several key themes for this year's Community Safety Fund in line with the refreshed Police and Crime Plan. Projects must contribute directly to a reduction in offending, antisocial behaviour, victimisation or reduce demand for the police.

Grants of up to £25k are available to organisations which support the PCC's Police and Crime Plan and can demonstrate success in their work.

The deadline for applications is midday on Friday 19 January 2018 and funding will be allocated for the financial year 2018-2019.

More information and grant application forms are available online at www.nottinghamshire.pcc.police.uk

BARLOW TROUT & COARSE FISHERY



5 Fully Stocked Coarse Fishing Ponds, including a specimen Carp Lake & 3 Trout Lakes

FARMSHOP & ALSO OUR FISHERY CAFE NOW OPEN

Crowhole Barlow • Derbyshire • S18 7TJ
Tel: 0114 2890543
www.barlowlakes.co.uk

Deacons Nursery (LL)
Mail order fruit trees and soft fruit specialists
Call now for your **FREE BROCHURE**

Phone: 01983 840750 or 01983 522243 Fax: 01983 523575
Email: info@deaconsnurseryfruits.co.uk
Website: www.deaconsnurseryfruits.co.uk

50% OFF ALL FRUIT (i.e. apples etc.)

Brand new and used Stairlifts from £800 (fitted)

All stairlifts come with a parts & labour warranty

NEXT DAY FITTING Available

Latest models for peace of mind

- Established 1987
- Main Dealer
- Straight
- Curved
- New • Used

CARLTON BASED COMPANY



www.liftecld.co.uk

**CALL ROGER AT LIFTEC
0115 987 5218**

Making your dream kitchen a reality



**Current offer
half price fitting
plus FREE Bosch
dishwasher**

tulip KITCHENS

Call us on 01623 651001

Outstanding bespoke kitchens & bedrooms

We provide a highly personalised service which means we can help you find your own dream kitchen, every kitchen we sell is made by hand and to order, in store, from a wide range of hardwoods visit our showroom in Mansfield Woodhouse or online at www.tulipkitchens.co.uk

Special Guest Inspires Students to Aim High

The Nottingham Emmanuel School hosted its annual Sports Awards evening which highlighted a wealth of sporting talent and success at the West Bridgford based school.

Gareth Clarke, Head of PE and acting Director of Learning Community at The Nottingham Emmanuel School said that it was a fantastic reflection on the achievements of the sporting year. "It is an event we are very proud of and was again a real success. I am really pleased with how it went and the fact that all who attended enjoyed this wonderful opportunity to come together and celebrate Emmanuel's talented students. We strive to provide our students with opportunities to participate and thrive in a wide range of sporting activities, and it has led to some outstanding team and personal performances this year. Our students are a real credit to the school and their families."

Student Josh Smith won accolades on the evening including Basketball and Sports Personality of the Year and said,

"It means a lot to me to win the Sports Personality award, it's made me really happy. I like my sports and the PE teachers at Emmanuel are really nice and supportive. I want to be a professional basketball player when I am older, but I also have back up plans if I don't make it to that level!"

The special guest speaker on the night was Andy Townsend, who completed the gruelling Marathon Des Sables, described as the 'toughest footrace on earth'. He had some good advice for the sporting students in the audience. "I would encourage the students here to dream big, to set big goals for themselves, to think about what they really want to achieve and to set their sights high. I would encourage them to persevere toward their goals, and not to give up. They should try and work with the people around them because in most things in life, we are part of a team that can work together. With determination and effort and support from others, you can achieve your dreams and goals."



A Reliable Parts Provider



Established in 1975 by John Traynor, Traynors Motorstore has grown to become the largest vehicle dismantler and motor factor in Ireland and one of the largest in the UK.

Since its establishment Traynors have gone from strength to strength thanks to its loyal workforce across three locations: Dungannon, Belfast and Grantham. Specialising in breaking, parts, bikes, salvage, and scrap, you can call one of our experts to help you find parts for your car using world-wide shipping, local delivery and click and collect services. Traynors have been at the forefront of vehicle recycling for over 40 years, and all of our Vehicles are recycled in a compliant and environmentally friendly way. We can dismantle anything from a Ferrari 458 Super Car to a Vespa scooter and everything in between. All parts are dis-

mantled, checked for quality assurance, computerised and shelved. We also have a call centre with over fifteen part experts on hand to handle over 3,500 calls received per day.

The average discount for one of our used parts is normally 75% off a new retail price, and if Traynors cannot provide a used replacement part we will try to import it for you.

Over the last 40 years we have worked hard to gain a reputation as one of the most reliable parts providers in the UK and will continue to do so in order to provide the high quality service our customers are used to.

Find out more by visiting www.traynors.co.uk or call 01476563756.



Find out more by visiting www.traynors.co.uk or call 01476563756



Traynors

MOTORSTORE

Top prices paid for scrap cars and motorcycles including many prestige and exotic vehicles. Over 150 vehicles dismantled a week, including over 2000 motorcycles and scooters.

Also importers of new body panels, bumpers, headlights, radiators, windscreens and towbars. Over 150 repairable salvage in stock.

Opening hours: Mon - Thurs 8am - 6pm
Fri 8am - 5.30pm • Sat 8am - 2pm

tel: 01476 563 756 email: parts@traynors.co.uk
www.traynors.co.uk



The Boundary, Gorse Lane, Grantham NG31 7UE





Linda Lancashire

07764 466381
01773 762675

E: contact@lindalancashire.co.uk
www.lindalancashire.co.uk



Aries

A sudden change in your domestic routine will provide you with some much needed breathing space. Suddenly you will have more clarity relating to a personal relationship that gives you good reason to doubt someone's honesty and integrity. If alone and almost given up all hope of ever meeting anyone suitable, stop worrying because you could receive an invitation that may change all that and introduced to some really special. You may even start thinking about putting your house on the market or looking to make alterations to the one you are currently residing in.



Taurus

The spotlight will be on close family and their personal dramas. You may learn the truth about something or someone and feel annoyed that these facts have been kept under cover until now. There could be an appointment made to consult professional regarding some legal advice. Don't be surprised if you are asked to lend money or it could be you who is doing the borrowing. Excitement and new health issues, start addressing to try to arrange a few days away or plan an outing. Good friends will give you all the support you need providing you show willing to improve your lifestyle.



Gemini

A last minute change of plan could work to your advantage. A new romance beckons on the horizon, and if you do decide to pursue that route, it could prove exciting in more ways than one. Professionally you may receive an offer that is too good to refuse resulting in either a financial gain from an investment, or challenging new job opportunity. You can also look ahead to a chance to enjoy some travelling experiences and this is also a great time to start thinking seriously about next year's big holiday as there are bargains to be snapped up everywhere.



Cancer

Its all systems go! But your attention will be drawn to one particular one major project that is going to use a lot of your time, energy and money. If you are currently planning an important special occasion, be absolutely honest with your partner or associates about your personal feelings regarding the guest list. An old flame may suddenly turn up or you may hear about their movements. Whatever the situation, its vital that you keep firm control over your emotions because a little compromising on your part will go a long way.



Leo

A lucrative job offer promises to put more money in your pocket. Spending time with your family will be rewarding and a conversation with a stranger could be the beginning of a beautiful new friendship. Its time to let the past go you have far too much going for you right now without allowing yourself to become drawn into complicated situations that do not concern you. If you have been away from home, you will feel delighted to return to your creature comforts.



Virgo

You have reached an important turning point in a close relationship or professional situation. Thanks to your diplomatic skills you will succeed in neutralizing a potential showdown, thus saving everyone a lot of upset. Because of all the enormous changes you have introduced into your current lifestyle, you are now attracting new and very different friends whom you share common interests with and whose companionship you enjoy. A budding new romance looks promising to say the least.



Libra

Indulge yourself as a treat is long overdue, especially if you have felt stuck in a rut with nowhere to run to. If single, you will meet someone who shares similar interests to you and who is also looking for a romantic long-term relationship, rather than just a casual fling. Slowly but surely you are witnessing major changes to your lifestyle that can only benefit you both personally and financially in the long term. Beware of someone trying to entice you into a sham business deal.



Scorpio

Your serious side is lightened by a few surprises and as for romance, a small gift works better than words as you seriously think about taking a relationship to the next level. Although friends are important, you can be emotionally supportive without being soft touch and you may just decide to put some distance between yourself and someone who can be a bit unreliable. Its time to bring your dreams and ambitions out of storage and put them to the reality test.



Sagittarius

Surprises that you secretly enjoy begin with two interesting discoveries. A career change may also come about that will release you from the boredom and monotony of your current situation and allow you to expand your talents elsewhere. You may even decide to enroll on a course to learn a new skill and meet new and interesting people at the same time. If you are unsatisfied about your current domestic circumstances, then take positive action and instigate some long, overdue changes before its too late.



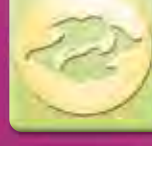
Capricorn

Your air of independence leads you to taking that vital first step towards a life that is right for you. News about someone who has previously wronged you will come as no surprise. Major changes lie ahead that will affect your working life one way or another, but will work out to your advantage in the long run, especially if you are seeking a new challenge with a better financial package on the table. Take care of your health and don't take any unnecessary risks especially if you are affected by long haul travel and extreme changes in time zones.



Aquarius

If you are currently involved in a romance or tricky relationship where you are unsure of where and how you stand, avoid being sucked in with someone who enjoys playing mind games. You are great to work with and thanks to some original ideas and optimism, a project or business venture succeeds in getting off the ground. Friendships made in unlikely places will set free a talent you did not realise you had and so-called, you will be in an extraordinary amount of demand.



Pisces

Its not been a particularly easy year so far, but take heart because the outlook is optimistic. You can look forward to winning a few more battles and smiling sweetly at someone who thought they had the upper hand in the past will have no choice but to comply with your wishes. In some cases, this situation may even involve seeking legal advice if you are to make any progress. If you have children, you will insist on putting their needs and interests first even if it does cause rows and disagreements with your partner. From now on, its your way or no way.

Projects involving Nottingham City Council's Museums and Galleries Service (NCMG) have recently been awarded top honours in three categories at the East Midlands Heritage Awards. The awards are designed to highlight progress and successes, recognise the hard work of staff and volunteers and to share best practice across the heritage and museums sector.

The first award related to the NCMG Volunteer Programme, with Greens Mill volunteers winning the 'Heart of the Community' category where Green's Mill Trust won the 'Heart of the Community Award' for their community garden. The Trust took over a large derelict allotment adjacent to the mill and transformed it with the support of their volunteers into a vibrant community space.

A second volunteer award came as Nottingham Industrial Museum volunteers won the 'Totally Voluntary Award' for the research, design and production of a range of merchandise to raise funds. The team of volunteers created a unique range of handcrafted and branded gifts to sell in the museum.

The third award was a judges' special award for the partnership with Drag-



Award-Winning Service



on Breath Theatre to develop the Cassandra Room at Wollaton Hall. Dragon Breath's artistic directors, designer Nettie Scriven and writer Peter Rumney were closely involved with developing creative learning in Nottingham's schools and both have close associations with the Theatre Design course at Nottingham Trent University, where Peter is a lecturer. Cllr Dave Trimble, portfolio holder for leisure and culture said: "Many congratulations to all our award win-

ners. These projects are great examples of partnership working between NCMG and the board/Trust members at these sites. It is important that we recognise these teams that work tirelessly to promote and to protect our heritage in the City.

"It is also wonderful that our teams have been able to bring innovation to the service once again and to look at new and exciting ways to show our rich history to as wide a range of audiences as possible."

COSMO Nottingham Invests in the City

A Nottingham world buffet restaurant says it is investing in the city by spending thousands of pounds on new seating and appointing an experienced sushi chef.

COSMO Authentic World Kitchen is midway through the process of replacing all of the upholstered seating across the restaurant and will replace a number of counters in time for the launch of its Christmas menu at the end of the month. It has also appointed sushi chef Mateusz Polak, who spent time studying the art of making sushi in Japan and has worked in a number of sushi restaurants, including in the Netherlands, Rome and London, over the past 10 years.

COSMO Nottingham opened its doors two years ago, offering diners the opportunity to help themselves to around 150 different dishes from across the world, including China, Japan, India, Italy, Mexico and the UK.

Diners can have their food prepared for them at the restaurant's live cooking stations, including a Japanese teppanyaki grill and the sushi counter, which is one of the most popular fixtures in the restaurant.

Matheus's arrival has seen the restaurant give its sushi menu a radical overhaul, with new flavours, styles and ingredients, including banana, chocolate, mango and coconut.

James Brion, director of COSMO Authentic World Kitchen, said: "Nottingham is one of the most dynamic and vibrant eating out destinations in the whole of the UK but it is also an extremely competitive place to operate a restaurant.

"We have seen countless names come and go in the past two years and anyone who stands still won't last long, which is why we are investing in new seating and counters to improve the customer experience and why we have appointed somebody of Matheus's high calibre.

"When he arrived for interview we asked him to prepare us some sushi and he blew us away with the quality of what he produced. Our customers love their sushi and Matheus has already set about challenging their taste-buds with a host of unique and different flavours."

Matheus, 30, said: "I started out as a chef making cakes but the first time I made sushi I knew that it was the dish I wanted to work in. That was 10 years ago and I have worked in many different countries in sushi restaurants.

"There are so many different styles and flavours that you can use and I am really

enjoying the freedom to prepare a variety of sushi for our customers." COSMO Nottingham is one of 20 COSMO restaurants operating across the UK, including in Sheffield, Belfast, Edinburgh, Oxford and Southampton. For more details visit www.cosmo-restaurants.co.uk.



SEARLES
HOLIDAY HOMES
HUNSTANTON



Own Your Own Holiday Home

Do you dream of owning your own holiday home by the sea?

- > Five star, multi award-winning resort
- > Located in the Victorian seaside town of Hunstanton
- > Golf Courses with full-time PGA professional
- > Unrivalled leisure and sporting facilities
- > Heated indoor and outdoor pools
- > Restaurants
- > Full entertainment programme
- > Exclusive owner's events

With a wide choice of new and pre-owned caravans and lodges from £15,000 to £200,000, we have something to suit all budgets.

T: 01485 536026 E: lodges@searles.co.uk
www.searles.co.uk/ownership

Quote "Notts in Focus"

Searles Leisure Resort South Beach, Hunstanton, Norfolk PE36 5BB

PHOTO: SEARLES LEISURE RESORT

Thinking of Starting a Business in the New Year?

The Pathfinder and Think BIG Loans offer financial support for start-up, early trading and existing businesses. The Pathfinder loans range from £5k to £25k, for the purpose of achieving agreed milestones to becoming a viable growth business. Think BIG provides loans varying from £25k to £150k to existing businesses that may not meet the banks' lending criteria, but are able to demonstrate that they have a viable proposition for growth.

The Think BIG Loan in particular provides loans to businesses with turnover of more than £150,000 and with no fewer than

five employees, including engineering, information and communications technologies, logistics, food processing and low carbon technologies.

The Gusto Group founded in 1983 by Steff Wright, became a Limited Company in 1998 when they started the process of understanding sustainable construction techniques and principles. In 2011, Rototek, an innovative local rotational moulding plastics company was purchased.

By 2014, Steff wanted to expand Rototek but was unable to secure the necessary funds to support the investment. To be granted a loan Steff had to demonstrate how financial help could grow the business and not only safeguard jobs, but

generate more local jobs in the district. In March 2014 the loan was agreed. Steff stated that the loan process had "delivered exactly what they said it would. The process was very smooth and they were able to 'cut out the middle man' and secure a loan that was competitive compared to other financial alternatives. Having that extra cash flow meant I could employ three more members of staff and we are now looking to hire for more."



Help Protect Your Community

Nottingham City Council is currently looking to recruit new Community Protection Officers to join the team and keep our city clean and safe.

Community Protection is a unique service, set up to tackle antisocial behaviour and environmental crime in Nottingham. The vision is simple – to create a safe and clean environment in every one of the city's neighbourhoods.

Working as a Community Protection Officer is a diverse role, as no two days are the same. Your morning will start with a briefing about what has happened and what lies ahead for the day.

With a focus on helping local citizens and the community, Community Protection Officers typically spend 85% of their time out patrolling, making it an ideal position for those who prefer an active role.

A rewarding career, Nottingham has 100 Community Protection Officers providing a visible presence in every neighbourhood, working with local neighbourhood policing teams to provide a friendly and fast response to neighbour-

hood issues.

Nottingham City Council believe is important that the workforce reflects the communities served and particularly welcome applications from black, minority, ethnic communities and disabled people as they are currently under represented within the workforce.

Nottingham City Council offers all employees the following benefits:

- Pay - commitment to equal pay for work of equal value. Job evaluations, consistent salary levels and clear pay structures are all in place to ensure this.
- Pension - up to 18% employer contribution
- Annual Leave - between 25 to 32 days dependent on grade and length of service
- Flexible Working - to support all employees in achieving a better work life balance
- Award Winning 'Works Perks' scheme includes Holiday Plus, Cycle Plus, Childcare Plus, My Time, Discounted Travel Schemes



If you are interested in apply, please visit the website www.nottinghamcity.gov.uk/vacancies. To find out more about living and working in Nottingham please visit the main website by visiting the following link www.nottinghamcity.gov.uk

BIG THINK BUSINESS INVESTMENT FOR GROWTH

Think BIG Loan Fund Business Investment for Growth

Are you looking for a loan to help grow your business?

The Think BIG Loan fund has been introduced to support those companies who may be struggling to raise working capital from the banks to finance growth of the business. The fund is managed by a team of professional risk finance specialists on the Council's behalf.

Think BIG provides loans to existing businesses that may not meet the banks' lending criteria but are able to demonstrate that they have a viable proposition for growth.

Have you been trading for three years, have a turnover of over £150k and employ 5 people or more?

Under the Newark and Sherwood District Council scheme, loans could be available to companies in the district that employ more than five people and have a turnover of over £150,000. Loans will typically be for between £25,000 and £150,000 on a repayment scheme of between six months and three years.

If you are an established business employing people and have an ambition for growth requiring more people that you unable to fund through a bank the loan fund team would be pleased to consider your business plan.

The interest rate charged will reflect the risk profile of the business, but will be around the commercial rate charged by the high street banks with suitable security for the loan. There will also be a small arrangement and monitoring fee.

Are you looking for support of between £5k and £25k for an early stage business?

If your business falls short of the above requirements, or for other support available to provide start up and early stage support you may be able to apply for a Pathfinder Loan managed through the same panel of professionals.

Pathfinder loans of between £5,000 to £25,000 are based on the stage of the business and purpose of the loan. The loan will be released based on agreed milestones and through agreement with the loan panel.

TR Enterprises of Bldworth, specialists in Triumph TR sports cars secured a loan. Owner, Steve Hall said, "The process was really simple and pain-free and the loan was agreed quickly. We are extremely grateful as it meant that we could progress with our growth plans sooner than we had originally anticipated."

What to do next?

GIVE VERONICA DENNANT A CALL ON 01636 655260 OR 01636 655277
OR EMAIL HER VERONICA.DENNANT@NSDC.INFO

HOLDING A LOCAL EVENT?

CALL 01159 314380



Now Recruiting Community Protection Officers

Your City Needs You!

As a Community Protection Officer you will perform a unique and innovative role, conducting street patrols within designated areas of the City, aimed at tackling criminal activity, dealing with environmental crime and anti-social behaviour using delegated powers.

So, do you have the qualities we need?

- A professional, calm and positive manner
- Effective communication and listening skills
- Ability to work shifts and be flexible
- The confidence to tackle inappropriate behaviours
- The ability to work in a team, but equally under your own initiative

ESSENTIAL REQUIREMENTS:

- Have a good attitude to work and a desire to learn on the job
- Ability to deal with enforcement situations tactfully and diplomatically
- Communication skills, including the ability to listen, empathise, negotiate and be assertive

Starting salary of £20,661

Potential salary of £25,951

Approximately 8 positions based in Nottingham with additional positions available working in Derby City

For more information visit www.protectnottingham.co.uk

For informal enquires please contact **Alex Cox** on **07983427888**

or email CPrecruitment@nottinghamcity.gov.uk

To apply please visit www.nottinghamcity.gov.uk/vacancies

[@SafeNottmJobs](https://twitter.com/SafeNottmJobs) [@SafeNottm](https://twitter.com/SafeNottm)



**Nottingham
City Council**

New City Venture to Be a 'Cut Above' the Rest



DNA Art Space – an ambitious hairdressing salon and creative hub – will be the latest addition to Nottingham's thriving independent scene this November, following a deal overseen by Innes England.

The new city centre salon on 12a King Street is the brainchild of award-winning entrepreneurs Angelo Vallillo and Dale Herne who are aiming to revitalise hairdressing in the city.

Trading over two floors and spanning 2500 sq ft, the space has been transformed from a former bridal shop into a space where up-and-coming hairdressers are encouraged to grow their careers.

Angelo and Dale both have more than 15 years' experience in the hairdressing sector. Angelo hails from Nottingham having worked at the city's well

renowned Zullo & Holland, while Dale boasts an international hairdressing portfolio and has relocated from London.

Angelo said: "Dale and I have created DNA Art Space in a bid to change how hairdressing is approached as a career and experience. We want DNA to be a salon where our customers and stylists feel comfortable – as some salons can seem unwelcoming, we want DNA to be a place for anyone. We hope DNA can act as a hub for Nottingham's creatives and a place where ambitious hairdressers will be encouraged to take their careers to the next level."

"We really want to get young people excited about the possibilities open to them in the sector. We have completely transformed our new space just off the

Market Square and can't wait to showcase the look and feel of DNA Art Space to local people!"

Both hairdressers have been involved in London, New York and Paris Fashion Weeks and have won a number of prestigious awards.

Director at Innes England Ben Taylor managed the deal on behalf of his client Azzurri Group, he said: "There has been a huge shift in Nottingham's retail scene, with more experience-led offerings appearing on the high street. DNA Art Space is a great addition to the broad range of businesses located in the city centre, and we are sure the new salon will thrive."

DNA Art Space is currently looking for talented staff in the city, from receptionists through to stylists.

National Anti-Domestic Violence Campaign

White ribbon pledges will be made across Broxtowe this winter as the Borough Council encourages employees, Councillors, partners, and local residents to pledge never to commit, condone or remain silent about domestic violence.

Each year the campaign seeks to educate and raise awareness of violence against women and urges as many people as possible to wear the ribbon for a week, which started on 25 November – the International Day for the Eradication of Violence Against Women.

Domestic abuse isn't just physical. It's about someone you know trying to control your life. This could

be a partner, ex-partner, or someone in the family. It can be financial, psychological, emotional or sexual. Living with it can affect long term wellbeing and self-esteem and if children are living in the same house, they will be affected too.

The Crime Survey for England and Wales estimates that 7.7% of women and 4.4% of men experienced any type of domestic abuse in the financial year ending March 2016. This is equivalent to an estimated 1.3 million female victims and 716,000 male victims.

For every three victims of domestic abuse, two will be female, one will be male.

The Council works regularly with Broxtowe Women's Project, Midlands Women's Aid, and Women's Aid Integrated Services to help women dealing with domestic abuse. It is also working towards White Ribbon accreditation with the White Ribbon Campaign UK.

For further information please get in touch with the Communities Team on e-mail at spc@broxtowe.gov.uk or by calling 0115 917 3492.



Nottingham Trent University Announces Alumnus of the Year

A postgraduate who risked his life to help save hundreds of people after heavy flooding hit India has been named as Nottingham Trent University's Alumnus of the Year for 2017. Umamaheshwaran Panneerselvam – who graduated from the University's School of Science and Technology in 2010 – helped to save more than 500 lives across the city of Chennai and provided food

and shelter to more than 3,000 people.

Chennai was submerged in high levels of water during the floods of 2015 and official help from the state government and the army was delayed for weeks.

Umamaheshwaran and his friends decided to take action and set up a 'help hub' in his home. Using social media they organised a rescue team

consisting of swimmers and fishermen.

The rescue team collected food and water from all over India and they swam across the water-clogged rivers to distribute it.

They moved disabled children, the elderly and hospital patients and liaised with other cities to find medical supplies. With the help of local community leaders and business-

men, Umamaheshwaran arranged shelters for all over Tamil Nadu and relocated those affected by the floods.

Nottingham Trent University's Alumnus of the Year award recognises former students' distinctive attainments, professional successes, and contributions to society.



Umamaheshwaran – who graduated with an MRes in Applied Biosciences – will receive his award during a University graduation ceremony on 8 December.

Since leaving university, Umamahesh-

waran has made himself a career in the mainstream media and now works for News7 Tamil. He has also worked as a political analyst and social media strategist for various political parties in India.

Umamaheshwaran said: "To receive a prestigious award from the university which has made me who I am today, will push me to do more service. I feel this award will inspire people back home to help others."



What we do

We are a Construction Training Company, accredited to CPCs, CSkills, EUSR, City & Guilds and National Plant. We offer practical and classroom training in all aspects of Plant, NRSWA, Confined Space and Safety Training.

Who we are

Allenby Training are a family run business having worked within the Construction Industry for the past 18 years. Together with our team of highly trained instructors/assessors and advisors we have successfully trained and built a strong client base of candidates that come back time and again as the needs of the industry change and qualifications need updating.

Our aims

We aim to offer the best possible training within the construction industry. To ensure that you are offered the best advice and given the correct training to keep you employed and up to date with current legislation – our success is measured by your success!

We provide a wealth of training /tests and NVQs for the construction industry including:

- CPCs Accredited Centre
- NPORS Accredited Centre
- NVQs Level 2-6 in Construction & Plant
- CSCS Touch Screen Tests
- City & Guilds NR&SW - Initial Training & Re-Assessments
- City & Guilds Confined Space including Level 5 Management
- EUSR Water/Gas qualifications
- Site Safety Plus - SMSTS - SSSTS - SEATS
- CITB Health & Safety Awareness Labourers Qualification
- Plant Training
- Bespoke Training
- Abrasive Wheels
- Manual Handling
- First Aid
- Health & Safety Consultants

CP Construction Plant
CS Competence Scheme

City
Guilds

EUSR
Employment & Skills

CSCS



Call us on 01522 548559

23 Crefton Road, Allenby Industrial Estate, Lincoln LN3 4NL
Allenby Training Services Limited, Plotwood Stables, Thorney Road, Wigley NG23 7EP

www.allenby-training.co.uk

Lincoln's leading training provider for the Construction Industry



ROYAL AIR FORCE
**REGULAR & RESERVE
2503 (County of Lincoln) Squadron**
Based at RAF Waddington

**ROYAL AIR FORCE
REGIMENT RESERVES
RECRUITING NOW**

You can serve with the RAF Reserves along side your full time civilian career

- Join age 18 to 54
- Minimum 27 days annually
- Many companies give an extra 10 days leave for Reserve Service
- Daily rates of pay for work and training
- Annual Tax Free Bounty (incremental)
- Work alongside the Regular RAF
- Opportunity to travel
- Lifelong learning opportunities
- Sport and Adventure Training opportunities

Apply now at
raf.mod.uk/recruitment
0345 606 9069

[/rafrecruitment](https://www.facebook.com/rafrecruitment) @RAF_Recruitment



Unsung Hero Strikes Gold at UK Bus Awards

The man who keeps trentbarton's thousands of bus stops informative and welcoming places to catch a service has won the national prize for Unsung Hero at the UK Bus Awards 2017.

Chris Plummer, trentbarton's roadside officer, won Gold at a ceremony in London on November 21, where he was up against seven other finalists from across Great Britain.

Chris, 46, from Ilkeston, plays a vital role at trentbarton and had already scooped the Unsung Hero title at the company's 2017 Really Good Service Awards.

Chris said: "I'm still floating on air after hearing I'd won. It was my son Jayhan's tenth birthday as well, so it was a nice present when I got home for his Dad to have won. My phone hasn't stopped ringing and my Facebook is pinging away."

Chris said he succeeds in his role because trentbarton gives him ownership of his job: "They trust me to do the best work possible. It's nice to have that responsibility. On a daily basis, I see customers looking at my work so I need to know it's up to my standards and that I'm giving 100 per cent all the time."

The Unsung Hero Award, sponsored by Backhouse Jones, recognises people who are committed, devoted to duty and truly go above and beyond making sure customers get where they need to be.

Mark Yexley, UK Bus Awards



chairman, said: "The judges were impressed with the dedication that Chris has shown making sure all the bus stop

information for trentbarton and its sister companies is the best it can be for his customers.

"He has shown this commitment for over 10 years, and the judges described him as the classic unsung hero."

FixaGlaze



Fog & Mist
free again!

Prices from **£35**

- Misted Glass Units
- Broken Locks/Handles
- Faulty Hinges

WE REPAIR OR REPLACE!

Call us today on: **0115 8377229**

www.fixaglaze.co.uk Email: contact@fixaglaze.co.uk



Situated in 25 acres of rural Leicestershire, Kibworth

KIBWORTH Shooting Ground & Gunshop

With a dedicated coaching, 4 airgun ranges and a long 85 yard range with 3 additional under cover ranges we've got all your airgun needs covered.

Open to corporate days, Scout & Young Shot days, stag parties for our air rifle, archery and clay shooting facilities.

New to the sport? Take our introduction into air rifle shooting - a one hour course, including a safety brief and all the equipment you will need.

Only £25 per adult and £20 for juniors.

Opening Times: Closed Monday Tuesday to Saturday - 9am to 5pm
Sunday 9am - 3pm
Open until 8pm on Thursdays - May to October

Prices: £5.00 for a Member, £10.00 for a non member
(stay for an hour, stay for the day)
Airgun Membership starts from £25.00 per year

FXairguns

WALTHER

Daystate

UMAREX

AA

W

ASG

K.S.O

CSM

W

WEIHRAUCH

BROCK

GAMO

Raikal



Kibworth Shooting Ground & Gunshop
Main A6 Harborough Road, Kibworth Beauchamp, Leicestershire, LE8 0RD
Tel: 0116 2796001 Email: info@kibworthshootingground.co.uk
www.kibworthshootingground.co.uk

Yummies Café
offers meals, snacks and
drinks, and our Reception
has a comfortable
seating area.

HOLDING A LOCAL EVENT?

CALL 01159 314380

**HUGE RANGE OF AIR GUNS,
SHOTGUNS & RIMFIRE/
CENTREFIRE RIFLES
AVAILABLE IN STORE**



**17TH
YEAR IN
TRADING**



PCP RIFLES



SHOTGUNS
VARIOUS SHOTGUNS
AVAILABLE



AIRGUNS
LARGE RANGE OF
SPRING POWERED
RIFLES



RIFLES
VARIOUS RIMFIRE/
CENTREFIRE RIFLES
AVAILABLE



RIFLES SCOPES
LARGE RANGE OF
VARIOUS BRANDS
OF SCOPES



**BB
GUNS**



**TARGET PISTOLS
AVAILABLE**



**LARGE
RANGE OF
AIR PISTOLS**



ACCESSORIES
WHOLE RANGE
OF ACCESSORIES
IN STOCK

Solware are a licensed registered firearms dealer
- proof and/or licence required to purchase

SOLWARETM
Feel free to visit our shop

f SALES HOTLINE: 01827 215222

Mon - Fri. 9.00am - 5.30pm Sat 9.00am - 3.30pm

Email: sales@solware.co.uk www.solware.co.uk

Unit 1, Tame Valley Business Centre, Tamworth. B77 5BY

Instant Finance Available DEKO

Christmas Memorial Tree Campaign Returns

A Nottinghamshire funeral company is officially launching its annual charity Christmas Memorial Tree campaign this week. Gillotts Funeral Directors is once again inviting families who have lost loved ones over the past 12 months, as well as in years gone by, to come into its five offices and hang messages of remembrance on the branches of Christmas trees erected in the foyers.

For each message left on the tree, the company will donate £1 to its chosen charity, which this year is Treetops Hospice Care.

This is the 12th year that Gillotts, which operates offices in Eastwood, Kimberley, Stapleford, Selston and Heanor, has run the Christmas Memorial Tree appeal. The event has grown in popularity every year and hundreds of messages are left every Christmas by people stopping by to remember friends or relatives. Many of them return year after year, which gives its staff the opportunity to catch up with them and find out how they are getting on.

Last year, Gillotts raised £2,000 for the Nuthall and District Community First Responders, who are often the first on the

scene when someone in north Nottinghamshire or East Derbyshire dials 999 for an ambulance. Joanne Hutsby, a partner in Gillotts Funeral Directors, said: "Ever since we launched our tree appeal we have received

It is wonderful for us to catch up with families we have dealt with in the past because in our business we are always left wondering how they are getting on once a funeral is over."



more and more visitors coming in to leave a message and it has become a part of the build-up to Christmas for a good many local families.

"Christmas can be a tough time when you have lost someone dear and there are always plenty of tears along with the smiles when people come in."

Gillotts' branch in Eastwood will be the first to unveil its tree at 6pm on November 28, its Stapleford office, in Derby Road, will launch its tree on December 4. Gillotts is also holding a Christmas Memorial Service at St Mary's Church, Greasley, at 12.30pm on Sunday, December 10 at 12.30pm. For more details visit www.gillotts.co.uk.

live happy!
with
Slimming World



CLIFTON

Community Centre
South Church Drive
Wednesday 5:30 & 7:30pm
Tel: Jackie on 07877055117

The Royal British Legion
(Next to Wilko's)
12 Donington Road
Wednesday 9:15 & 11:15am
Friday 8:00 & 10:00am
Tel: Sacha on 07515 172984

COTGRAVE

Candleby Lane School
Candleby Lane
Tuesday 5:15 & 7:00pm
Tel: Maria on 07718 999033

EAST LEAKE

East Leake Academy Cafeteria
Lantern Lane (use staff car park)
Tuesday 5:30 & 7:30pm
Tel: Meg on 07792 943873

East Leake Leisure Centre Dance
Studio Room (Opposite Reception)
Saturday 8:30am
Tel: Meg on 07792 943873

HUCKNALL

St Peters & St Pauls
Community Hall, Ruffs Drive
Wednesday 5:30 & 7:30pm
Tel: Kerry on 07804 493162

The John Godber Centre
Ogle Street
Saturday 9:00 & 11:00am
Tel: Kerry on 07804 493162

KEYWORTH

The Methodist Church Hall
Selby Lane
Monday 5:00 & 7:00pm
Tel: Naomi on 07734 791608

LONG EATON

Moorlands Club
295 Curzon Street
Thursday 5:30 & 7:30pm
Tel: Judith on 07711 043213

Sawley All Saints Church
561 Tamworth Road
Tuesday 7:00pm
Tel: Judith on 07711 043213

RUDDINGTON

Jubilee Clubhouse
Loughborough Road
Monday 5pm & 7pm
Tel: Wendy 07870 830097

WEST BRIDGFORD

Gresham Sports Pavilion
Gresham Park Road
Off Wilford Lane
Monday 7:00pm
Tel: Gillian on 07463856253

Edwalton Golf Club
Wellin Lane
Tuesday 7:00pm
Tel: Sacha on 01159287316

Gresham Sports Pavilion
Gresham Park Road
Off Wilford Lane
Wednesday 7:00pm
Tel: Shirley on 07946727077

West Park Sports Pavilion
Loughborough Road
Thursday 5:00 & 7:00pm
Friday 8:00 & 9:30am
Tel: Athena on 07792 045221

The Rugby Club
Stamford Road
Saturday 8:00 & 10:00am
Tel: Naomi on 07734 791608

slimmingworld.co.uk

0344 897 8000



Slimming
WORLD
touching hearts, changing lives

'One Stop Beauty Shop'

Launches in Nottingham

Nottingham's newest independent beauty destination, Kiki, has officially opened its doors. Located on the top floor of intu Victoria Centre, Kiki offers everything from cosmetics, clothing and hair extensions to eyebrow threading, make-up tutorials and hair extension fitting, all at really affordable prices.

Kiki has been set up by Nottingham-born entrepreneur Nikita Richards - who has been successfully running hair and beauty stalls in the Victoria Market for the past two years - after she spotted a gap in the market for a standalone 'one stop shop' for everything beauty. Nikita said: "I have always liked to fill gaps in the market and so I've continuously let customer sales dictate my stock which has kept people coming back time and time again. However, I was also finding that women were asking for my recommendations on where to get their nails or hair done, or the best salons for a makeover."

"It made me think about the possibility of bringing all these goods and services under one roof in the centre of town, and thanks to First Enterprise my plan has become a reality."

Enterprise Loans provided a total of £50,000 in funding with £25,000 from its start-up loan fund and £25,000 via the ELEM funding stream. The loan helped the costs of setting up the business, refurbishing the unit, the purchase of stock and advertising.

Victoria Copestake, loan fund advisor at First Enterprise, said: "We are thrilled to help Nikita with the funds she needed to set up Kiki - her business plan was extremely viable and well thought out."

"Kiki is such a unique yet excitingly convenient shop as it brings together both products and services which is very unusual. I am confident that Nikita is going to do extremely well in her first standalone Kiki shop."

Kiki opened on Saturday 18 November and will be open for business during intu Victoria Centre's regular trading hours.



One of the most effective muscle and joint gel rubs EVER!

www.pioneertrading.co.uk

ACTIVE Blue

Acclaimed Best Muscle & Joint Rub by the Daily Mail.

As endorsed by Dame Cleo Laine for the relief of muscle & joint pain, especially beneficial after injury.

Contains Golden Emu Oil

Free samples now available contact 01526 345613

Golden Emu Oil

Golden Emu Oil is a natural anti-inflammatory which soothes muscles and joints. Its amazing properties soften and moisturise the skin giving a youthful glow, encouraging re-growth of skin cells and stronger hair follicles.

Emu Oil capsules contain omega 3 6 and 9 and have many health benefits.

See full range online at www.pioneertrading.co.uk.
Ring 01526 345613 or email pioneertrading@btconnect.com for more information

CoachStyle

part of the Skills Group

CALL US ON 08456 66 55 44* VISIT US AT WWW.COACHSTYLE.CO.UK

DEALS ON WHEELS: DUTY FREE SHOPPER - 2 DAYS

INCLUDES: Return ferry sailing + 1 nt DBB in Hotel + Excursion to a French hypermarket

FROM **£89**
S/SUP £20

WINTER WONDERLAND IN HYDE PARK - 2 DAYS

INCLUDES: 1 nt BB in 3* Hotel + Free time in London + Free time at the Winter Wonderland event in Hyde Park

FROM **£69**
S/SUP CALL

LEEDS & SKIPTON CHRISTMAS MARKETS - 2 DAYS

INCLUDES: 1 nt DBB in 4* Hotel + Free time in Leeds & Skipton

FROM **£75**
S/SUP £15

CHRISTMAS MARKETS ON THE RHINE - 4 DAYS

INCLUDES: Return Channel crossing + 3 nts DBB in Hotel + Free bar + Entertainment + Visits to Rudesheim & Bonn

FROM **£189**
S/SUP CALL

BIRMINGHAM XMAS MARKETS - 2 DAYS

INCLUDES: 1 nt DBB in 3* Hotel + Visits to Birmingham's Frankfurt Christmas market & Shrewsbury

FROM **£79**
S/SUP £20

LONDON & HARRY POTTER - 2 DAYS

INCLUDES: 1 nt DBB in Hotel + Free time in London & Entry to the Warner Brothers Studio

FROM **£119.95**
S/SUP £15

4-DAY MYSTERY EXPLORER TOUR - 4 DAYS

INCLUDES: 3 nts DBB in Hotel + Bar offers at hotel + Turkey & Tinsel package + Mystery excursions

FROM **£119**
S/SUP CALL

LEEDS & MANCHESTER XMAS MARKETS - 2 DAYS

INCLUDES: 1 nt DBB in 4* Hotel + Free time to enjoy Leeds & Manchester Christmas markets

FROM **£75**
S/SUP £15

CHRISTMAS ON THE ISLE OF WIGHT - 5 DAYS

INCLUDES: 4 nts DBB in Hotel + Entertainment + 1 afternoon tea + Visits to Newport & Ryde + Tour of island

FROM **£419**
S/SUP CALL

A WELSH TWIXMAS BREAK - 3 DAYS

INCLUDES: 2 nts DBB in Hotel + Entertainment + Free time in Chester & Anglesey + Scenic drive through Snowdonia

FROM **£119**
S/SUP NIL

NEW YEAR ON THE ISLE OF WIGHT - 4 DAYS

INCLUDES: 3 nts DBB in Hotel + Entertainment + Bingo & Fancy dress + Isle of Wight tour

FROM **£309**
S/SUP CALL

COACHSTYLE PARTY BREAK - 2 DAYS

INCLUDES: 1 nt DBB in Hotel + Party Night with disco & dancing + Bar offers + Free time in Liverpool

FROM **£75**
S/SUP CALL

LONDON SALES SHOPPER - 2 DAYS

INCLUDES: 1 nt DBB in Hotel + Free time in London & Bicester Shopping Village

FROM **£59.95**
S/SUP CALL

LIVERPOOL & MANCHESTER - 2 DAYS

INCLUDES: 1 nt DBB in Hotel + Tea/coffee after dinner + Free time in Liverpool & Manchester

FROM **£69.95**
S/SUP £16

*(Calls cost 3p per minute plus your network provider's standard access charge)

Subject to availability and selected coach holiday only and terms & conditions apply. For tours operated by Skills Holidays, CoachStyle, Skills Days Out visit www.skills.co.uk for full Terms & Conditions. For tours operated by Laver Holidays visit www.laverholidays.co.uk for full Terms & Conditions. Prices are per person based on 2 people sharing a twin room and are subject to availability. Nil single room supplements are limited. All credit card transactions are subject to a 2.75% charge.



Join us for our
OPEN DAY SATURDAY 6TH JANUARY 2018
Visit between 11am - 3pm

**CANAPÉS &
CHAMPAGNE**
on arrival

The Bridal Lounge
HIGHGATE

BRIDAL CATWALK
brought to you by Rachel Scott
from The Bridal Lounge Highgate.
1pm

MEET SUPPLIERS
11am - 3pm

Free Entry
into our
Luxury Prize
Draw!



WEDDINGS | PARTIES | BESPOKE EVENTS
YOUR EVENT. YOUR WAY.

WWW.HOWELL-MANOR-EVENTS.CO.UK
ELAINE@SARDESONS.COM | 01529 460 267



Christmas

A VERY FUNKY CHRISTMAS DISCO PARTY

Eat, Drink, Dance & Be Funky with The Disco Prophets at Springfield Hall, Sandiacre on Friday 15 December. Springfield Hall & Events (Station Rd, Sandiacre, NG10 5BD) are hosting a very Funky Christmas Disco Party on Friday 15 December (7pm 'til Midnight). Get your freak-on and enjoy live Music from the only 100% Disco band in the East Midlands...The Disco Prophets. Guests are invited to dress-up

festive and dance all night to Live and DJ music. There will be mulled wine and mince pies for everyone too...all in the beautiful surroundings of Springfield Hall, Sandiacre. The Disco Prophets will deliver an irresistible mix of dance-floor classics from the '70s/'80s to present day. Expect to shake your stuff to deep grooves by artists such as Marc Ronson, Chic, Daft Punk, Earth Wind & Fire, Michael Jackson, Bruno Mars,

Sister Sledge and Chaka Khan. There will be prizes for Best Christmas Jumper and Best Santa Disco Dance Moves! Book early to avoid disappointment; then start creating your Funkiest Christmas costumes and practicing those dance routines. Tickets are £7 for adults and £5 for kids. Book your place at the party at: www.springfielddiscoveries.co.uk/product/339/ or call Rich on 07794 582244.



LOG'UN STICKS
Firewood suppliers

Christmas Tree Sale

COME EARLY TO AVOID DISAPPOINTMENT

- Pot grown trees • Free netting • Bases fitted
- Nordmann fir trees • Spruce trees

155 Main Rd, Ravenshead, Mansfield NG15 9GS
(Next door to the little john pub)

01623 462072
07854524977

Wirksworth Station, Coldwell Street, Wirksworth, DE4 4FB



The Milk and Honey Line

SANTA EXPERIENCE 2017

Journey from Wirksworth and see Santa on the train for Christmas!

9th, 10th, 16th, 17th, 19th, 20th, 21st, 22nd, 23rd & 24th December.

Book online now at www.e-v-r.com/santa

or call 01629 823076



IF
YOU
WOULD
LIKE
TO
FEATURE
ON
THIS
PAGE
PLEASE
CALL
US
**01159
313879**



Highfields Happy Hens

Open Farm, Farm Shop & Tea Room

A Truly unique Open Farm experience for all ages.

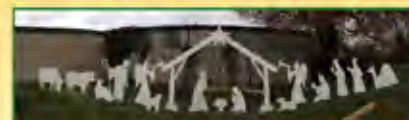
WHERE CHRISTMAS IS CHRISTMAS!

Christmas Events.....

1st Dec - 5th Jan: Come and see our Amazing Nativity Scene

Fri 8th Dec 6.00pm: Join us for our unique Carol Service with Salvation Army Youth Band & 'A Few Surprises' (Followed by mince pies & Fairy Light Tractor & Trailer Ride)
This is a Free Event

1st Dec - 4th Jan: Christmas Treasure Trail
(Free event for all Open Farm Visitors—normal entrance fee applies!)



FREE ENTRY
with this voucher
when accompanied by a paying visitor!

Farm Shop Offers.....

*All the traditional produce +

*Christmas Poultry - orders now being taken.

*Lots of Christmassy food, toys and gifts.

*Why not relax in our Tea Room & enjoy a tasty Christmas treat too!

Opening Times

For opening times see our website

Closed - Christmas Day, Boxing Day + New Years Day

For Parties & School Trips see our website.

Highfields Happy Hens, Heage Lane, Etwell, Derby DE65 6LS
Tel: 01283 735063 www.highfieldshappyhens.co.uk

Melton's Big Christmas Weekend

Friday 1st December 2017

St Mary's Christmas Tree Festival

Friday 1st to Tuesday 5th December

The largest display of trees in the country! Visit the website for opening times. www.melton.leicester.anglican.org



Princess Pals

Get your photo taken with your favourite princesses in the Market Place from 5.00pm until 7.00pm.



Victorian Christmas Lights Switch On

Friday 1st December. 10.00am until 8.00pm



Victorian Market

Over 50 Victorian Themed Stalls selling festive gifts, speciality crafts and locally produced food and drink.

Open from 10.00am until 8.00pm

Late Night Shopping



Firework Spectacular



6.45pm Switch On!

with **Cinderella** - the star studded cast aids the Mayor of Melton to switch on the lights. Melton Theatre's Cinderella opens on Sunday 15th December through to 21st December. www.meltontheatre.co.uk



Meet Santa

Parade with Trumpton down Nottingham Street at 4pm. Grotto Open 4.00pm to 8.00pm



Queen Victoria

Look out for Queen Victoria in her Palace in the Market Place. She will be in residence from 10.00am on Friday, Saturday & Sunday.



Free Christmas Parking!

All Day on Friday 1st, Saturday 2nd, Friday 8th, Friday 15th & Friday 22nd December 2017 in Scaford Road, Mill Street & Burton Street LONG STAY car parks.



Melton Mowbray CHRISTMAS LIGHTS

Friday 1st December 2017

STAGE PERFORMANCES

- 09.15 The Grove Primary School
- 09.30 Swallowdale Primary School
- 09.45 St Francis Primary School
- 10.00 Asfordby Captains Close Primary School
- 10.15 Hose Primary School
- 10.30 Frisby Primary School
- 10.45 Sherard Primary School
- 11.00 Somerby Primary School
- 11.15 Stathern Primary School
- 11.30 Waltham Primary School
- 11.45 Redmile Primary School
- 12.00 Longfield Academy
- 12.15 John Ferneley High School
- 12.45 Ab Kettleby Primary School
- 13.00 Croxton Kerrial & St Peter's Schools
- 13.15 Scaford Primary School
- 13.30 Great Dalby Primary School
- 13.45 Brownlow Primary School
- 14.00 Long Clawson Primary School
- 14.15 St Mary's Primary School
- 14.45 Melton Guitar Tuition
- 15.00 Charlie Russell
- 15.30 MV16
- 16.00 Zumba Melton
- 16.45 Charlie Russell
- 17.30 Performing Stars
- 18.00 Rock Choir
- 18.40 'Blessing of the Tree' - Revd Ashby

18.45 SWITCH ON! & Fireworks

Cast from "Cinderella"

Yolanda Offodile

PLUS Victorian Christmas Market . Queen Victoria . Santa Parade & Grotto . Princess Pals . Christmas Tree Festival

SPONSORED BY:



www.melton.gov.uk

/MeltonBC

@MeltonBC



Coates Traditional Butchers

Visit us at: 183 Bramcote Lane, Wollaton:

WOLLATON • ALREWAS • BORROWASH • TAMWORTH
Naturally Supporting the Countryside for over 100 Years

www.coatestraditionalbutchers.co.uk

CHRISTMAS AT COATES

Treat your family to a quality Christmas they won't forget
with Antony Coates, your traditional family butcher!



**Now
taking
your
Christmas
orders**



- Local Beef, Hung for 21 Days • Free Range Bronze Turkeys
- Quality Barn Reared Turkey • Packington Slow Reared Cockerels • Gressingham Ducks & Geese • Wild Locally Shot Pheasant & Partridge • Succulent Three-Bird Roast

Other Christmas favourites include: Wild Venison, Packington Free Range Pork, Bacon and Hams, Homemade Pork Pies, Game Pies and Much, Much, More!

Call us on 01159 284714

*A Family
Business
For Over
110 Years*

Find us on

facebook

Search
'Peter Coates
Butchers'

**Coates Traditional
Butchers,**
183 Bramcote Lane,
Wollaton, Nottingham,
NG8 2QJ

Tel: 01159 284714

Mon - Fri 7.30am - 5.30pm

Sat: 7am - 5pm

Christmas

EVERY LOCKED DOOR IN ESCAPOLOGIC'S ESCAPE ROOMS OPENS INTO ANOTHER WORLD

Enter a game so detailed and real you'll think you're in a life-sized version of your favourite console title, or a real-life Hollywood blockbuster.

As the clock starts ticking, you'll have to work quickly to explore the intricately detailed sets, searching for clues to help you break out.



HAVE YOU GOT WHAT IT TAKES?

Our Golden Ticket gift vouchers a perfect alternative gift for the friend or family member that has everything

Book now! www.escapologic.com 01158374840 contact@escapologic.com

Let the Tram Transport You to a Magical Place

A flurry of festivities makes Nottingham the place to be this Christmas – and the best way to enjoy the seasonal magic is by tram.

The city's popular Winter Wonderland has returned to Old Market Square with its irresistible mix of ice-rink, food, bars, market, and entertain-

ment. As the event's transport partner, NET offers a swift and convenient ride to the heart of the festive fun!

Elsewhere on the tram network Santa himself is taking up residence at Toton Park and Ride on the weekend of December 16/17. Tickets to his grotto cost just £2 per child, including a gift from Santa, and are available from the Toton Lane Park and Ride Kiosk. Organised by the Forever Stars charity, there will be entertainment and food available throughout the week-end.

Beeston, meanwhile, flicks the switch on its Christmas lights on December 2 in Beeston Square. The tram will drop you right in the middle of this extravaganza of festive colour and light, running from 3.30pm-7pm with a traditional fair and fireworks.

Travelling with family or friends? NET is making £5 group tickets available after

4pm, on weekends, and during school holidays (Dec 26 – Jan 5). It's also available all day on Black Friday, (November 24) for those seeking a festive bargain.

There's even Yuletide fun on the trams themselves as Smooth Radio and their street team will be on board for the next four weeks giving out festive treats. Stephanie Moss-Pearce, Marketing Manager at NET, said:

“When it comes to the city's big festive events, and helping people reach them quickly and easily, NET has got everything covered. Our tram network means more people can enjoy a fantastic Christmas in Nottingham without any worries about beating the traffic. All they have to do is sit back and enjoy this most special time of year.”

Supper with Santa
Downtown Superstore
Wednesday 6th, 13th & 20th December • 5:30pm - 7:30pm
£6.50 per child | £3.50 per adult

Downtown Garden Centre
Thursday 7th, 14th & 21st December • 5:30pm - 7:30pm
£6.50 per child | £3.50 per adult

Giant Snowglobe
Downtown Garden Centre
Weekends & Selected dates until 1st January
£5 for 5 minutes for up to 7 people

Visit www.olderids.co.uk/santa for full event details

Downtown
PART OF THE OLDRID GROUP EST. 1804

Gonerby Junction, A1, Grantham, Lincs. NG32 2AB • 01476 512333

www.olderids.co.uk

Tickets to events are limited and sold on a first come first served basis. Entry to the events is by ticket only.

Christmas 2017

	Buffet Party Nights Our popular buffet party nights in the Crown Suite are less formal but lots of fun. Finger buffet and dancing until late included. Available on 2nd, 8th & 15th December Arrive 7:00pm for 7:30pm	£20.00 PER PERSON
	Carvery Party Nights The party starts from the minute you walk through the door where you will be invited to the carvery for freshly carved meats and seasonal fresh vegetables. Available on 8th & 15th December Arrive 7:00pm for 7:30pm	£35.00 PER PERSON
	Mistletoe Masquerade Ball Join us for a night of mystery, charm and intrigue at our Mistletoe Masquerade. Be the creator and make your own mask as the best mask receives a bottle of fizz! Available on Sunday 10th December Arrive 7:00pm for 7:30pm	£30.00 PER PERSON
	Festive Afternoon Tea Dance Enjoy a delicious festive afternoon tea in our Shelly Ballroom before enjoying the night fantastic to the sounds of the 1960's, 70's & 80's. A game of bingo included! Available on Wednesday 20th December Arrive 11:00am for 12:00pm	£16.00 PER PERSON
	New Year's Eve Gala Let us take you into 2018 in style! Enter the fabulous Shelly Ballroom, a superb four course meal with live entertainment, disco, paper and fireworks at midnight. Available on Sunday 31st December Arrive 7:00pm for 7:30pm	£87.00 PER PERSON
	Boxing Day Lunch An exquisite boxing day lunch, time for families and friends to enjoy the merriments of the festive season and relax in beautiful surroundings. Available on Tuesday 26th December Served 12:00pm until 4:00pm	£25.00 PER PERSON
	New Year's Day Lunch Start off the New Year in style after a busy festive season. Dine in our Orangery Restaurant and enjoy a fabulous four course lunch. Available on Monday 1st January 2018 Served 12:00pm until 3:00pm	£25.00 PER PERSON

WEST RETFORD
HOTEL & RESTAURANT

To make a reservation or for more details, please contact:
visit: www.westretfordhotel.co.uk | tel: 01777 706 333
24 NORTH ROAD | RETFORD | NOTTS | DN22 7XG

Christmas

Christmas Light Switch On & Seasonal Celebrations!

Reminder that the Christmas Light Switch On will be on Saturday 2nd December between 4pm and 6pm on Main Street in Burton Joyce. The Alpacas are paying a return visit and will be outside the Old School Building, along with the brass band, the Choral Society, School Choirs and Dangerous Derek, the fire-eating street entertainer (who won't be too close to the Alpacas!). Mulled wine, food and a small number of stalls and fairground rides will be in the Cross Keys Car Park, not forgetting the arrival of Father Christmas! We hope all this will ensure a wonderful start to the festive season for all the family. Entrance to the event is free.

BURTON JOYCE CHRISTMAS LIGHT SWITCH-ON & CHRISTMAS FAIR

Saturday 2nd December
4pm to 6pm
Old School Building & Cross Keys Car Park, Main Street

FREE EVENT FOR THE WHOLE COMMUNITY
Something for all ages.... Christmas Choirs, Brass Band, Street Entertainer, Fun Fair, Crafts and Food... not forgetting the arrival of a very important guest to switch on the lights!

BURTON JOYCE
Village Council

WELBECK ABBEY BREWERY

2018 BREWERY TOURS

APRIL 19, MAY 17, JUNE 21
JULY 19, AUGUST 16, SEPTEMBER 20

Join one of our expert brewers for a guided tour around our traditional microbrewery. Tours run from 7.30pm to 9.30pm and cost £10 per person. With this you will enjoy two pints of our lovingly hand crafted real ale, plus learn a little more about the ingredients and passion which go into each pint. Tickets can be purchased at Welbeck Farm Shop or online via our website at www.welbeckabbeybrewery.co.uk

@WELBECKABBEBRY

BREWERY YARD, WELBECK, WORKSOP, S80 3LT | 01909 512539

Santa's Grotto

OPEN EVERY DAY

Experience the magic

Meet Santa and tell him what you want for Christmas*

from 11th November

*Paid for experience, £5 per child includes a toy.

Frenchgate
SHOPPING CENTRE

frenchgateshopping.co.uk

Christmas

EXCLUSIVE IN STORE

CHRISTMAS OFFERS

£5 OFF CLOTHING
WHEN YOU SPEND £25 OR MORE

10% INSTANT CASHBACK
ON GUITARS AND BASSES

50% OFF ANY STOOL
WITH ANY ELECTRIC DRUM KIT

FREE STOOL OR STAND
WITH ANY PORTABLE PIANO OR KEYBOARD OVER £200

0% FINANCE AVAILABLE
Take it away

ICON MUSIC
LOCAL MUSIC CENTRE

MELTON MOWBRAY
58 KING STREET, LE13 1XB

www.iconmusicuk.com ★ 01664 568 000

SOUTHWELL RACECOURSE, SOUTHWELL

Moonlight DRIVE-IN Cinema



THE MUPPET CHRISTMAS CAROL
4th December



HOW THE GRINCH STOLE CHRISTMAS
4th December



NL CHRISTMAS VACATION
5th December



IT'S A WONDERFUL LIFE
5th December



THE NIGHTMARE BEFORE CHRISTMAS
6th December



ELF
6th - 10th December



SANTA CLAUSE
7th December



GREASE
7th December



HOME ALONE
8th December



DIE HARD
8th December



THE POLAR EXPRESS
9th - 10th December



LOVE ACTUALLY
9th December

Light Up a Life

Treetops Hospice Care is inviting people to sponsor a light on their Christmas tree to shine in memory of someone special throughout the festive period. The lights will be switched on during a special Light Up a Life ceremony at the hospice on Sunday 3 December from 4pm.

Treetops, based in Risley, provide nursing care and emotional support for adults in Derbyshire and Nottinghamshire including a Hospice at Home service for patients at home.

Keith was supported by Treetops nurses and his daughter, Tracey, shared her story of the difference this made: "My dad, Keith, was diagnosed with lung cancer just before Christmas 2007.

"I'm one of four children and we all pulled together to make sure one of us was with dad from early morning until late evening every day, but due to family and work commitments, we weren't

always able to stay with him overnight. "At night was when he was at his most vulnerable as he was very weak and likely to fall and hurt himself if he

needed to get up. "I really don't know what we would have done without the exceptional help from Treetops Hospice

Care. Most nights were covered by one of the Hospice at Home nurses who were so professional, capable, friendly and understanding about the situation.

"Dad developed lovely relationships with the nurses and we felt that we could talk to them about any problems or concerns. There were never any rushed "handovers"- they always had time to sit and have a cup of tea with us, and tell us how dad had got on in the night.

"We were able to leave Dad overnight, safe in the knowledge that he had someone with him - which was also a great comfort and help to him."

Light Up a Life Dedications can be made by anyone who wishes to remember a loved one and those making a dedication do not have to attend the Light Up a Life service.

The ceremony will include carols and readings and refreshments will be available from 3pm. Dedications will be on display in a Book of Remembrance. The ceremony is an outdoor event so those attending are advised to dress for the weather.



BOOKING ONLINE OR CALL
03330 064608
MOONLIGHTCINEMA.COM/SOUTHWELL



Visit the Reindeer

**21st -24th
December
10-3pm**

**£5 per child
£2 per adult**

(cash only, no booking
required)

Refreshments from



23rd & 24th December
(Saturday & Sunday only)



- Santa's Express
- Woodland Walk
- Santa's Treat
- Letter writing
- Games • Activities

Call 07796 772367 for details



Haughton Park House Farm, Bothamsall, Retford DN22 8DQ

Santa's coming to Retford



Enjoy a 30minute trip with Santa
aboard the narrowboat **SETH ELLIS**
on your canal.

Trips are available every weekend and Christmas week
from the 25th November until 24th December.

Departing on the hour from 10am to 4pm each day
from the Hop Pole Pub, Welham Road DN22 6UG

£7 per passenger.

Every child receives a gift from Santa
and every adult a seasonal nibble and drink

Advance booking is essential for these trips.

For further information and to make a booking
please phone 07925 851569



The Chesterfield Canal Trust
is a charity run entirely by volunteers
Reg Charity No 1071376
www.chesterfield-canal-trust.org.uk





OUTDOOR PLAY EQUIPMENT



**Like us on
Facebook**
Search **Funframez**

Tel: 01623 860 169 Mob: 07864 679 768
Web: www.funframez.co.uk Email: sales@funframez.co.uk

CASH REFERRALS ON ALL WORK PASSED ON

Unit 222 Boughton Industrial Estate Boughton Newark Nottinghamshire NG22 9LD
DNCC member




SHIELD SHEDS
& Garden Rooms

Your **One Stop Shed Security Needs**

Bespoke Timber Sheds with the Ultimate
in Security, based in Boughton, Notts

Our friendly and experienced team at Shield Sheds will build you a shed
to your own specification so giving you a greater peace of mind when it
comes to keeping your hard earned personal possessions stored safely.

We provide a One Stop security service for your garden shed with
alarms linked to your phone, door bars, security lights and internal
security bars to chain up your bikes and garden machinery.

A CHOICE
OF HINGES,
LOCKS,
WINDOWS
AND ROOF
COVERINGS
ALSO
AVAILABLE

Tel: 01623 860 169 Mob: 07864 679 768
Web: www.shieldsheds.co.uk Email: sales@shieldsheds.co.uk



Like us on
Facebook



Shield Sheds
& Garden Rooms

Unit 222, Boughton Industrial Estate, Boughton
Newark, Nottinghamshire, NG22 9LD DNCC member

MAKE MERRY THIS CHRISTMAS

in Loughborough

We have a fun-packed programme of events for the whole family to enjoy this Christmas.

Robin Hood Pantomime
25th November - 7th January
Loughborough Town Hall

Santa Steam Trains
25th November - 24th December
Great Central Railway

Christmas Tree Festival
29th November - 3rd December
All Saints with Holy Trinity Church

Rotary's Santa Fun Run & Walk
3rd December, 11.00am
Loughborough Town Centre

Winter Festive Fayre
10th December, 10.00am - 4.00pm
Loughborough Town Centre

Christmas Cracker Market
13th - 17th December, 8.00am - 4.00pm
Loughborough Town Centre

Charles Dickens presents:
A Christmas Carol
19th December, 7.30pm
Loughborough Town Hall

Community Carol Service
20th December, 7.00pm
All Saints with Holy Trinity Church

Christmas Retail Markets
22nd - 23rd December, 8.00am - 4.00pm
Loughborough Town Centre

Carols at the Carillon
24th December, 1.00pm - 1.45pm
Carillon Tower, Queen's Park

**Plus FREE PARKING in Charnwood
Borough Council car parks (excluding
Browns Lane) on all Sundays from
26th November to Christmas Eve.**

To find out more visit
LoveLoughborough.co.uk/events

*Robin
Hood*



LoveLoughborough.co.uk

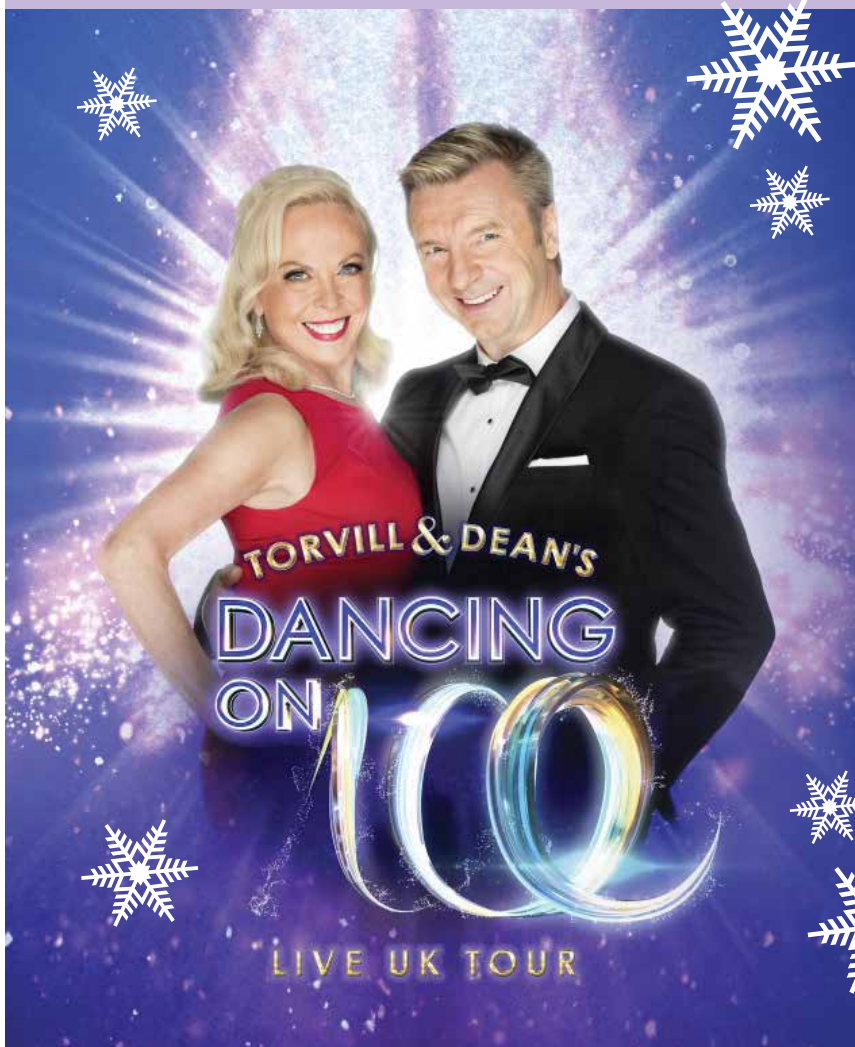
Twitter.com/@lovelboro

Facebook.com/LoveLoughborough





Torvill and Dean's Dancing On Ice Live UK Tour Is Back!



Starring Torvill and Dean as Head Judges!

The Dancing on Ice Live UK Tour will be skating back across the country next year, starring the legendary Jayne Torvill and Christopher Dean. Following a four year break, this spectacular new show will perform all over the UK stopping off at the Motorpoint Arena Nottingham 10-12 April 2018.

Joining Torvill & Dean on tour will be a host of celebrities and professional skaters from the new Dancing on Ice series, which starts on ITV in January next year.

Jayne & Chris will host the tour once more and take up their new roles as Head Judges. The King and Queen of Ice will be on hand to give their expert critical feedback and their all-important scores to the celebrities and their skating partners.

In addition to the scores from the Ice Panel Judges, arena audiences can text vote from their mobile phones for their favourite skating couple. Audience votes will then be added to the scores from the Judges to decide the overall celebrity winning couple.

They will then take to the ice to perform a magical finale.

Jayne Torvill and Christopher Dean said: "We are delighted that Dancing on Ice Live is touring again next year. We really enjoyed hosting the last tour in 2014, so we'll be doing that again, plus we're taking on our

new roles as Head Judges. The tour has struck such a huge chord with audiences around the country ever since it began in 2007 and we can't wait to be back on the road in 2018, with a bigger and better live show for all the family to enjoy."

Tickets are on sale now, priced at £50.40 and £72.80. Prices are listed with administration fee included. There is a maximum of eight tickets per person for this event. Tickets can be booked online at www.motorpointarenanottingham.com/online/dancing-on-ice or via telephone on 0843 373 3000 or in person at the Motorpoint Arena Box Office, Bolero Square, The Lace Market Nottingham, NG1 1LA. You can arrange transport to this event direct through Motorpoint Arena Nottingham.

VISIT THE RESTORATION OF AVRO LANCASTER NX611



See the Lancaster how you've never seen it before! NX611 is undergoing major maintenance with parts stripped back. Restoration tours bookable online starting 1st December 2017.

Support the restoration project by joining the RIVET CLUB and receive weekly and monthly updates, from just £2/month.

www.lincsaviation.co.uk
01790 763207



MELTON MOWBRAY

Christmas Victorian Weekend

Friday 1st to Sunday 3rd December 2017

Join the fun - dress in Victorian costume

A traditional Christmas experience for all the family

Visit the home of 'Paint the Town Red' with ... Traditional Crafts Christmas Tree Festival at St Mary's Parish Church ... Crib Festival at Sage Cross Church ... Marching Bands ... Falconry ... Taste our local Stilton Cheese and Pork Pies ... Balloon Modellers ... and so much more!

The whole town open for Festive Street Entertainment!

Facebook: @MeltonMowbrayVictorianFayre Twitter: @vicfayre

Visit our website: <http://www.victorian-fayre.co.uk>

For details call Ruth on 01664 622114

IF
YOU
WOULD
LIKE
TO
FEATURE
ON
THIS PAGE
PLEASE
CALL
US
01159
313879

nottingham **harmonic** choir

FAMILY CAROL CONCERT

2017 - 2018
Royal Concert Hall Nottingham
www.NottinghamHarmonic.org

WEDNESDAY 20 DEC 2017 7.00PM
SATURDAY 23 DEC 2017 5.00PM
ROYAL CONCERT HALL

Family Carol Concerts

Richard Laing Conductor
John Morehen Organist
Thoresby Colliery Band
Stan Lippeatt Conductor

Tickets: £10 - £20 concessions available
Family ticket £25-£44
Available from Royal Concert Hall Box Office
www.rch.co.uk
0115 989 5555
or in person 9:00 am - 8:30 pm Mon-Sat

Charity No. 231548

Sunday 10th December

NEWARK CHRISTMAS MARKET

Carols of
Praise Service.
5 pm at the
Newark Parish Church.
10th December.

AND
WINTER FEAST
10 am ~ 4 pm

Seasonal
Sunday Events
in the Market Place.
3rd and 17th
December.

CAROL
SINGING
LOCAL BANDS

STREET
ENTERTAINMENT
STAGE ACTS

FESTIVE
FOOD & DRINK
CHRISTMAS LIGHTS

GIFTS
& CRAFTS
CLASSIC CARS

Why not combine your visit to Newark with a trip to the National Civil War Museum,
and the Christmas Tree Festival 2nd - 10th December.

FREE PARKING IN ALL COUNCIL CAR PARKS
ON DECEMBER SUNDAYS UP TO CHRISTMAS

 Newark Royal Market  @HeartofNewark

For more information on all the day's events contact the Market's office on
01636 681495 or ian.harrison@newark.gov.uk



 NEWARK &
SHERWOOD
DISTRICT COUNCIL

MARKET 29 PLACE
GROOMING & SHOP

Celebrating 6 years at 29 Market Place!

Luxury wet shave £25
Gift vouchers available
The perfect gift solution.
A wide range of quality grooming products available.
Beard trims from £5
Expert advice on grooming, taming and using products on your beard.

OFFER for November
Consultation and
Luxury beard
grooming with
Albert £10.

download
our new APP
Booking on your smart phone
is easy & convenient
download yours
now for **FREE**

www.29marketplace.co.uk
29 Market Place • Bargain NG1 5AE • 0115 9337783

NOTTINGHAM
LIGHTING CENTRE

Largest independent lighting showroom in Nottinghamshire

DAVID HUNT BRAND PARTNER
For further details please call
01159 537088

Visit us at 45 - 61 Maid Marian Way, Nottingham NG1 5GE
Open 9.30am - 5.30pm Monday - Saturday
Now open Sundays until Sunday January 15th 11am-4pm
www.nottinghamlightingcentre.co.uk

Looking for local social events and activities?

From meals out to coffee mornings, outings and talks, you can be sure of a warm welcome. Upcoming Oddfellows events include:

Tuesday 5 December 2017 11.00am Price As Per Menu Coffee
Morning Harper & Finch, 66 Bath Street, Ilkeston DE7 8AJ

Friday 8 December 2017 10.30am Guest Speaker Ann Featherstone: A Brief History of Pantomime Eastwood Conservative Club, Church Street, Eastwood, NG16 3BP

Friday 8 December 2017 12.00pm Price £15 Christmas Lunch
Hogs Head Hotel, Awsworth Lane, Awsworth, NG16 2RN

Monday 11 December 2017 10.00am Price As Per Menu Breakfast Club Upper Crust, 10 High Street, Long Eaton, NG10 1GH

www.oddfellows.co.uk for membership enquiries 0800 028 1510

The Oddfellows is the leading order of the Independent Order of Oddfellows in the United Kingdom. It is a friendly society, incorporated and regulated in England and Wales No. 2291. Registered Office: Goldsmiths House, 138-139 Chancery Lane, London EC2A 4PU

SCOTT TRAILERS LTD
of Walscott Lincoln

Your Ifor Williams Trailer Distributor
Trailers from Camping to 3500kg gross
Sales • Repairs • Servicing • Spares

Sole Distributors in Lincolnshire & Nottinghamshire
Spares available by post and carrier • You are welcome to view our stock of Trailers

Tel: 01526 860317 • Fax: 01526 861357
website: www.scott-trailers.co.uk
e-mail: office@scott-trailers.co.uk

Opening hours Mon to Fri 8am-5pm • Sat 9am-12 noon
Other times by appointment

Coles
Plumbing and Heating Services

- Boiler Service • Breakdowns
- Fire Cookers Installations
- Plumbing and much more.

Located in Arnold Nottingham

T: 07411 532005
E: colesphs@yahoo.com
W: colesphs.com

CROSSWORD

ACROSS

- 1 Gracious chaps (5)
- 4 Ingenious devices (7)
- 9 One who fibs (4)
- 10 Likeable rascal? (5)
- 11 Afternoon nap (6)
- 12 Smallest amount (5)
- 14 Award of merit (5)
- 15 In good health (4)
- 16 Worn out, exhausted (3-5)
- 17 Dwell (6)
- 19 In addition to (4)
- 22 Whines in complaint (7)
- 24 Zero (3)
- 26 Examination of accounts (5)
- 27 Pointed weapon (5)
- 29 Make worse by interference (9)
- 32 A cheap cotton fabric (7)
- 35 Pickling acid (7)
- 37 Red jam fruit (9)
- 39 In good time (5)
- 41 Tend the sick (5)
- 43 Domestic fuel (3)
- 44 Hot condiment (7)
- 47 Opener in fence (4)
- 48 Social importance (6)
- 51 Aeroplane height (8)
- 52 Mooch about (4)
- 54 Look pleased (5)
- 55 Calendar girl (3-2)
- 56 Enclosure for birds (6)
- 57 Sharp stone (5)
- 58 Close by (4)
- 59 The bottom (4,3)
- 60 Country bumpkin (5)

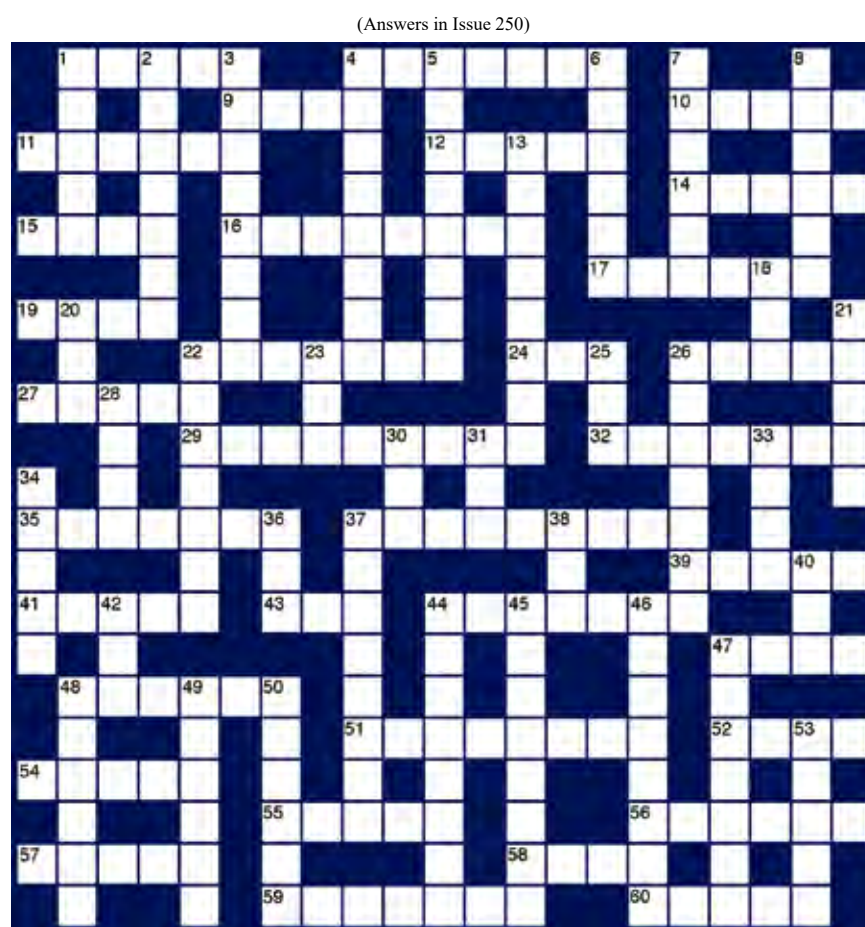
DOWN

- 1 Show the way (5)
- 2 Snuggles closely (7)
- 3 In a carelessly haphazard way (4-4)
- 4 A welcoming (8)
- 5 Low spirits, calm conditions at sea (8)
- 6 A simple shot at goal (6)
- 7 Portable stove (6)
- 8 Vicar's aide (6)
- 13 Assembly of spectators (8)
- 18 Father (3)
- 20 Rim of cup (3)
- 21 Postage voucher (5)
- 22 Noisy dispute (7)
- 23 Neither (3)
- 25 Drag heavily (3)
- 26 Vexed (7)
- 28 Level (4)
- 30 By way of (3)
- 31 Spoil-heap (3)
- 33 Sixty minutes (4)
- 34 Occurrence (5)
- 36 Thick floor-mat (3)
- 37 Forcibly hold back (8)
- 38 Take food (3)
- 40 Allow (3)
- 42 Rubbish! (3)
- 44 Nine is this of three (8)
- 45 Small island pony (8)
- 46 Herb a girl? (8)
- 47 Publicity stunt (7)
- 48 Easy (6)
- 49 A score (6)
- 50 Late snack (6)
- 53 Danger (5)

ISSUE 247 CROSSWORD ANSWERS

ANSWERS ACROSS
1 Window cleaner 9 Noise 10 Football pitch 13 Ape 15 Pea 16 Idea 18 Irrelevant 19 Lure 20 Epee 23 Waits on 25 Arenas 26 Roe 27 Upstream 28 Airship 30 Bless 32 Baa 34 Dehumanise 35 Drill halls 37 Goo 38 Crazy 40 Inanely 41 Neat hand 43 Sew 44 Commit 45 Observe 47 Sent 48 Bent 49 Alligators 51 Shoe 53 Out 54 Asp 56 Refrigeration 60 Roger 61 Rekindled love

ANSWERS DOWN
1 Whips 2 Duo 3 Cobbles 4 Nip 5 Rut 6 On hire 7 Vice 8 Tea 10 Fair-weather 11 Liven up 12 Intent 14 Portals 17 Allege 21 Election 22 Brand 24 Testament 25 Ambulance 29 Initiate 31 Silly season 32 Beg 33 Ado 36 Scowl 38 Cookers 39 Admits 40 Idolise 42 Hot air 46 Sea wall 47 Sherry 50 Stage 52 High 55 Pry 57 For 58 Ink 59 Owl



PRIME COMFORT
Mobility Aid Centre

sandpiper
SHOE STOCKIST

Mobility Scooters • Wheelchairs • Power Chairs • Riser Recliners • Wide Fitting Footwear
Riser Recliners • Stairlifts • Profiling Beds • Mattresses • Rollators • Shopping Trolleys
Sanitary Wear • Walking Sticks and lots more!

Bring this ad with you. Get 10% off your next purchase*

1 Market Place | Grantham | NG31 6LQ | Telephone 01476 560044 | primecomfort.co.uk
OPEN: MONDAY - FRIDAY: 9am - 4.30pm

* MINIMUM PURCHASE £20. VALID UNTIL 23RD DECEMBER 2017

Mastercard VISA

South Notts Computers
The heart of computers

If you have damaged your computer or iPhone in anyway we can get it fixed for you in super quick time! We are guaranteed to beat quotes from Apple on our repairs and you're getting the same great quality fix by a qualified and experienced engineer.

Virus removal
Got a virus? No problem, we offer a complete solution. We will clean up the virus for you and help you secure your computer to keep it safe from future attacks.

Laptop repairs
We offer a full laptop repair service. We have an in house laptop expert that can get your laptop back up and running in no time, no matter what the damage is!

New PC?
If you're thinking about getting a new PC we offer a new selection of new and used laptops and PCs to choose from. Give us a call and we can see what we can do for you with your budget.

10% off with this ad quote NF0615

Phone repairs
Dropped your phone? Cracked screen? No problem, we have one of the top rated iPhone repair techs in the whole country. He can come to you or you can pop your phone in and we guarantee it will be cheaper than going direct to the manufacturer and 9

South Notts Computers
The Heart of Computers

Microsoft REGISTERED Refurbisher
Microsoft Technology Associate
iMend

If you need a quote or to book a repair, please give us a call on: **0115 0147085**

Education

Trent Vale Nursery



We have places for a minimum of 15 hours up to a maximum of 30 hours

WHAT IS AVAILABLE?

Morning Nursery Session:

8.45am - 11.45am

Supervised Lunch Club:

(at a cost of £3.00 or £5.50 inc. hot dinner)

11.45am - 12.30pm

Afternoon Session Mon - Fri

12.30 - 3.30pm

These sessions are term time only and we can provide information for wrap around care.

Our Nursery is run by a highly skilled and fully qualified teacher who has worked in the EYFS for many years

By attending our school based nursery your child will have the opportunity to play and develop social skills within a safe and exciting environment. The staff are very warm and friendly and encourage children to love learning. They provide them with skills to have a positive start to school life with a smooth transition into our school if you wish.

If you are interested please feel free to contact us to arrange a visit
Trent Rd, Beeston Rylands, Beeston, Nottingham NG9 1LP
tel: 0115 9179 224 or email: office@trentvale.notts.sch.uk

Mount St. Mary's College
Entrance Assessment 2018

The Entrance Assessment for Mount St Mary's College takes place on the morning of Saturday 27th January 2018 for admission into years 7, 8 and 9 in September 2018. Over the last few years we have seen a large number of students attend this morning which includes both the entrance assessment, run in conjunction with the University of Durham, along with a series of more practical activities designed to challenge and engage those attending. All children who would like to participate are welcome subject to registration. Once the assessment results are back all parents are invited to meet with us to review their child's performance in detail; a meeting which we find both informative and the start of strong communication with parents.

For further information and to register call 01246 433388 or email admissions@msmcollege.com. www.msmcollege.com
Mount St. Mary's College is leading independent day and boarding school for boys and girls aged 11 to 18, in Spinkhill near Sheffield.



GEM Connection

Ladies' Barbershop Harmony Chorus

LOVE to SING!

6 week 4-part harmony singing workshop
Thursdays 7-10pm from January 11th 2018

Pick Tenor, Lead, Baritone or Bass & learn two great songs with us
Long Eaton School, Thoresby Road, NG10 3NP

NO PRESSURE - NO AUDITION - NO SOLOING
So if you're looking for something new to do in 2018, or a truly different present,

book a place now
by emailing

kevlyn@uwclub.net

£30

to get your prep pack & music

FREE for 16-21yo & FT students

Reg. Charity 1152040

FIRST CLASS
TAILORED SOLUTIONS FOR YOUNG PEOPLE

**TUTORS
WANTED**

We are a company specialising in quality educational provision

Due to increasing demand, we are looking to recruit excellent tutors, teachers, teaching assistants, youth workers and learning mentors who are willing to work on a sessional basis. Applications are welcome from practitioners across all Key Stage, curriculum areas and those who have worked successfully with young people in a range of settings. An ability to work flexibly is essential and a willingness to travel reasonable distances is expected. We offer generous rates of pay and the opportunity to work within a friendly and supportive team who really make a difference to the educational outcomes of young people out of school.

Please complete an application which can be downloaded from our website: www.first-class.org.uk or contact us on 01623 429484 or 01636 626171 for further details

get ready for winter



The colder months can bring new challenges to homeowners, making now a better time than any to ensure that everything is in working order before the temperatures really drop. A home health check is an easy and essential start to your winter preparations. Checking your central heating, safety equipment and motor will help you to avoid some preventable situations that could leave you out of pocket as the seasons start to change. Ensuring that your boiler is in working order before you rely on it this winter will leave your family high and dry throughout the

worst of the weather and will keep you warm as the cold night draw in. Checking safety equipment including locks on your windows and doors, as well as your fire and burglar alarm, will help to keep you and your family safe and secure as the festive period begins. This is also a good opportunity to check the wires on any electrical equipment, especially things that are regularly used, as these will experience the most wear and tear and could be dangerous if left damaged and exposed. Taking care of your car by making sure that it has been serviced, topping up the oil, wa-

ter and brake fluid levels, as well as checking your tyre pressures and lights, will help to keep you safe on the road during the changing conditions on your commute to work. If you're unsure about any of your home appliances, now is a good time to get an expert in who can offer you support, advice and the right replacements. Lastly, a good tidy up never hurt. Take the dark nights and colder evenings as an opportunity for a little home redecoration and spruce up a tired space by introducing some new colours and fabrics to make your home more welcoming this winter.

Omega | windows & doors™

Manufacturers & installers of quality UPVC Windows & Doors



Unit 9, Alfred Street South,
Nottingham NG3 1GE

T: 07771 567812

T: 0115 7617982

E: tmfraser1966@hotmail.com



Conservatories
Patos & Bi-Folds
Soffits & Fascias
Small Building Works
Orangeries
Specialising in flush
facing sash windows



We are Specialist in Windows, Doors and Conservatories.
Our products are available in a range of styles and colours,
to suit you and your home.

With over 20 years experience from a local and reliable team, we offer friendly,
impartial advice, with a free no obligation quote.

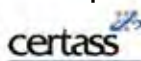
We aim to help you achieve your dream home, to your detail, at affordable prices.

DICKSON WINDOWS

Telephone 01777 869440

Our Services:

Windows | Doors
Conservatories | Tiled Floors
Brickwork Removals | Glass Units
Window Repairs | Lead Flashing
Minor Building Work



Streetwise



**Quote
WINT2017 by
Jan 30th 2018
to receive
a 10%
discount**

Get your house and garden ready for Winter!

Services we offer;

- Gutter clearance
- Tree and hedge works
- Garden maintenance and leaf clearance
- Fencing installation, maintenance and repair
- Clearance; tidy out your sheds and garages and allow us to remove single or large quantities of unwanted items

We operate with Public Liability Insurance, full Risk Assessments and under Quality Assurance ISO9001.

For competitive rates and a free quote call us on 0115 914 8408 or email streetwise@streetwiseenvironmental.co.uk

care



Clipstone Hall & Lodge Residential and Dementia Care Home and The Grange Care Home

Your local care home in the heart of your community



Come in for a chat, see the hard work that goes on behind the scenes, make a new friend or make someone's day.

We'd love to show you around our home and you never know, you may find something you are looking for.

Clipstone Hall and Lodge Residential & Dementia Care Home

Mansfield Road, Clipstone, Nottinghamshire NG21 9BH

Telephone: **01623 636 010**

The Grange Care Home

Field Drive, Shirebrook, Mansfield, Nottinghamshire, NG20 8BS

Telephone: **01623 747 070**



For more information please contact the home directly or visit our website www.orchardcarehomes.com

IF
YOU
WOULD
LIKE
TO
FEATURE
ON
THIS
PAGE
PLEASE
CALL
US
**01159
313879**

Orchard at the heart of the community

Working in partnership with:



Collin's HOMES

HOUSES AND BUNGALOWS AVAILABLE AT COLLIN'S HOMES. CLOSE TO REGULAR BUS ROUTES AND LOCAL AMENITIES, THE SITE IS WELL MAINTAINED, QUIET, AND WITH AREAS OF GREEN OPEN SPACE

Are you 60+ and able to live independently?
Do you receive housing benefit/universal credit, and live in Nottingham City or in Broxtowe, Gedling or Rushcliffe?
If so, you may qualify to live here.

We currently have available two-bedroom houses for couples, and fully carpeted one-bedroom bungalows with bathroom or wetroom for single people.

We are situated on Derby Road, Beeston (opposite Wollaton Road, and The Nurseryman)

To find out more please contact Janice Avery on 0115 9224826 (Monday-Thursday morning), or

Email: abelcollinsadmin@btconnect.com

or write to the Administrator, 13a Collin's Homes, Derby Road, Beeston, Nottingham, NG9 2TF.

Janice can arrange an informal visit for you to see what we have to offer, and to have a chat with existing residents who can tell you what they like about living here.

See more at: www.abelcollins.org.uk

Registered charity No 214833

Paving the Way to Better Care



Leading building products manufacturer Forterra has donated hundreds of bricks and paving blocks to a care home in Nottinghamshire to help with the landscaping of its back garden.

Boughton Manor care home, near Newark, has remodelled its rear garden for its 27 residents to enjoy, and built a patio with a permanent gazebo, using several packs of red Butterley bricks donated by Forterra's nearby brickworks at Kirton and 40m² of Formpave block paving donated by Forterra's plant in Coleford. Care home Administrator Simone Dalling said: "We're extremely grateful for the donation of all these bricks and blocks, which have helped us make our back garden into a place our residents can access more easily and enjoy properly."

"The new block paving makes it easier for residents with mobility issues to get about, and the gazebo itself is a lovely place to shelter if it starts to drizzle, or if the sun gets too warm in the summer. The new patio and the gazebo both look lovely thanks to Forterra's generosity."

Wayne Reid, Technical Sales Manager at Forterra, who helped organise the donation and visited the home to see it completed, said, "When we heard that the local care home was doing a big build in its back garden, we offered to step in and donate paving and bricks, so that their residents could enjoy their garden in comfort."

Forterra's Kirton brickworks employs 60 members of staff and produces more than a quarter of a million bricks, every working day, most of which are used to make new homes.

Stephen Harrison, Chief Executive of Forterra, said, "As a responsible business operating in the local area we like to be able to contribute to worthwhile commu-

nity projects such as this. We're pleased that the build has gone well and that the residents' new garden can be fully enjoyed."

Royale Mobility Ltd

BECAUSE WE CARE

Your local specialists in sales and servicing of mobility products including power chairs, scooters, stairlifts, beds and R&R chairs

We pride ourselves on selling quality products with a service that is second to none

We service all of your mobility products, at your own home by our fully experienced engineers



FREEPHONE 0800 0286619
royalemobility.co.uk

Forest Road New Ollerton, NG22 9PL Tel: 01623 862839
1a Debbie Lane, Keyworth, NG12 5HT 08159 375260
26 Patchwork Row, Shirebrook, NG20 8AL Tel: 01623 742720



AHM Installations

BATHING, STAIRLIFTS, MOBILITY

New & Reconditioned Stairlifts
New from £1395
Reconditioned from £495
Breakdown call outs
and servicing from £80
Stairlift removals

Call or email for a free no obligation quote on
01636 821443 or 0800 7316495

www.ahminstallations.co.uk
info@ahminstallations.co.uk



Unit 4 The Workshops, Old Great North Rd
Sutton-on-Trent, Notts. NG23 6QS

Hidden Gems

NOTTINGHAMSHIRE'S LITTLE TREASURES



LOOKING FOR SOMEWHERE NEW TO MEET UP WITH YOUR FRIENDS THIS FESTIVE SEASON? WHY NOT TRY A COSY AND RELAXING ENVIRONMENT, PERFECT FOR SIPPING HOT COFFEE OR ENJOYING A BITE TO EAT?

There are many independent cafés and tea rooms dotted all over the county, waiting to be discovered by loyal coffee drinkers and cake enthusiasts. Find yourself a hidden gem today for an exciting new place to enjoy your favourite tea time treats.

You will be simply amazed by all the different qualities which make up our well-known and loved independent coffee shops today. From signature and unique blends of

coffees to speciality food and cake menus which cater for a wide range of diets, including varieties which cater to gluten free, Slimming World and vegan customers, there is something to suit everyone. Explore a range of various coffees, milks and speciality treats which make each café different. If you have friends visiting over Christmas or you want to branch out from your

usual trusty lunch spot, why not head into Nottinghamshire to find a funky new location serving up delicious food and drinks for you to enjoy - who knows, you might just discover your new favourite hideaway. Take a look at our fantastic collection of yummy cafés, delis and tea rooms for a little inspiration this winter.



The Refectory occupies a fantastic location inside Southwell Minster grounds, with magnificent views that can be enjoyed on our patio area. An ideal spot to enjoy one of our scrumptious cakes and a pot of tea. Our ethos is to serve seasonal, good quality, locally sourced food where possible. From light bites to daily specials, fresh bean to cup coffee to our carefully selected wine menu. We also have a selection of Vegetarian and Gluten Free options available daily.



THE REFECTORY



Church Street | Southwell | Nottingham | NG25 0HD | Tel: 01636 815691



Tiffin

Opening Times
Mon - Sat
9am - 5.30pm
Sun 10am - 5pm

Tiffin is a teahouse providing all the comforts of the great British tradition of afternoon tea. We serve fresh food, home baked cakes and a wide selection of speciality teas along with coffee, cold drinks and of course, Afternoon tea. Our teahouse is a friendly, welcoming environment where people of all generations can share and enjoy the charm of Tiffin. We continue to create a nostalgic experience of days gone by, when there was always time for tea and a natter.



35 Abbey Rd | West Bridgford | Nottingham | NG2 5NG | Tel: 0115 9816224 | www.tiffinteahouse.uk.com



The Bluebird

Opening times:
Monday to Friday 9am till 5pm
Saturday 10am till 4pm

- Homemade cakes and scones
- Afternoon teas • Light Lunches
- Daily Specials • Smoothies & Frappes

Gluten Free options available
Slimming World friendly cakes & lunches

Outside catering | Family garden area

69 Main Street, Burton Joyce,
Nottingham NG14 5ED

0115 9314343



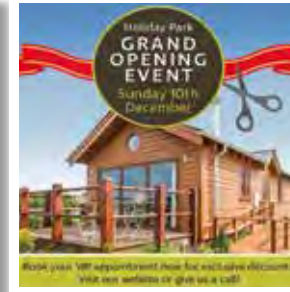
Brand New Luxury Holiday Park Opening In East Yorkshire



Willow Pastures Country Park is opening in December, selling the only holiday homes of this type in the area. Only 18 months after receiving planning permission for their state-of-the-art holiday park, Tony Cook Ltd will be opening Willow Pastures Country Park on 10 December. The Sycamore holiday homes, which are available to own or as holiday lets, are the only holiday home of their kind in the area.

awarded NHBC warranty. Making the most of the site's idyllic, rural location on the doorstep of the City of Culture 2017, this luxury holiday park hopes to attract buyers from across the country and encourage tourism in the area. Available fully furnished, the homes offer value for money for investors and an easy turn-key solution. Tony Cook Ltd is working in collaboration with national holiday provider Hoseasons to adver-

creasing looking to stay in the UK. Vanston Cook, Managing Director said "We are fortunate to have a highly skilled workforce and have been able to take advantage of this to turn a grass field into a luxury holiday park within 2 years. The team have taken real pride in making sure everything from the foundations to the flower beds are of the very best quality. Receiving the NHBC warranty just confirms the high level of workmanship which has gone into the project. I'm looking forward to finally opening up and letting people enjoy their Christmas holidays here or even invest in their second home." Interested buyers are warmly invited to a grand opening on Sunday 10th December. For an exclusive first look at the park, book a no-obligation VIP appointment by visiting www.willowpastures.co.uk or calling (01964) 598303. Holiday bookings are also being taken for 2018.



Each home designed and furnished to an exceptional standard and is

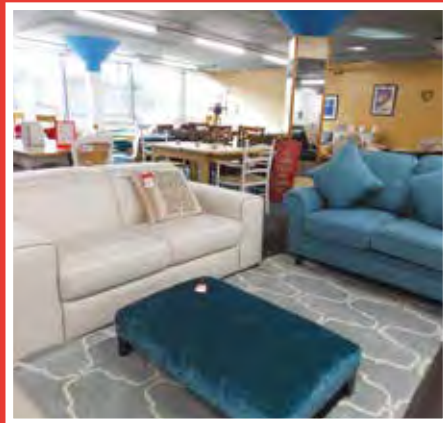
tise the park across the country and attract holiday makers who are in-

Is Your Home Ready For Christmas?

Stocking a huge range of discount and designer home furnishings including sofas, coffee tables, outdoor furniture and much more, you'll find everything you need to furnish

your home for the festive season at Furnishing Direct – at better than high-street prices! With a large showroom conveniently based in Nottingham just 10 minutes from the city centre, with ample parking and lots on display, Furnishing Direct offers customers a fantastic range of furnishings in-store. When visiting the showroom, shoppers will have the opportunity to enter an exciting new Christmas competition by putting their name and number in a prize draw for a chance to win £100 off their next in-store purchase – this applies to the already significantly reduced prices available!

The competition ends on 10th December at 4pm, and a winner will be notified by telephone on the 11th December. Anyone shopping in-store can also get 10% off their total purchase when they present this advertisement (valid until 22/12/17). Showcasing leading high street brands at significantly reduced prices, the showroom is open 10am-4pm, 7 days a week, with managers Bev and Karan happy to help answer any questions on the shop floor. For more information, visit Unit D, Sovereign House, 184 Nottingham Road, Basford, Nottingham, NG7 7BA, call 01159785050 or email: info@furnishing-direct.co.uk.



QUALITY KITCHEN FACELIFTS

Transform your kitchen SAVE £££s

Est. 1999



Before



why replace when you can reface?

- Huge choice of doors, worktops, appliances, sinks and taps
- Installed by local skilled tradesman
- Trusted reputation

DREAM DOORS®
NEW LIFE FOR OLD KITCHENS

Proud members of
Checkatrade.com
Where reputation matters



Call for a Free Estimate:
0115 871 9718
www.dreamdoors.co.uk

New Life for Old Kitchens

A place where you prepare meals, entertain guests and dine with friends and family, the kitchen is the heart of the home. Therefore, it should be an inviting, practical and stylish space.

By adding new features such as doors, drawers and clever storage solutions – you can transform your kitchen in a matter of hours with minimal disruption.

The one-stop-shop for all kitchen requirements, Dream Doors is an award-winning kitchen supplier that specialises in bringing new life into your old kitchen.

With 80 showrooms up and down the country, Dream Doors is launching a new showroom in Nottingham, opening February 2018 at 39 Wollaton Road, Beeston. Run by Jon and Hilary Brown, Dream Doors Nottingham is a family run business that provides local residents with a hassle-free alternative to replacing their entire kitchen.

Whether you want to completely overhaul your kitchen or simply freshen up your current look, the range of replacement kitchen doors, accessories and appliances at Dream Doors could save you a staggering 40% in comparison to a full refit!

Dream Doors have also been celebrating a record-breaking year with a collection of prestigious award wins, securing trophies at the inaugural Home and Living Awards for Best Kitchen Supplier and Best Money Saving Product, two awards that highlight the strength of the company's product as well as its impeccable reputation within the industry. For more information or to discuss your kitchen requirements, visit www.dreamdoors.co.uk or call 0115 871 5892.



The tree also marks part of the Council's involvement with National Tree Week 2017; the annual commitment by the Tree Council to plant more trees and highlight their value. Trees provide habitats for all sorts of wildlife, but they also provide value for humans too. They help to clean our polluted air, provide shade to keeps people cool, help conserve energy, and they look great too.

Help Stop the Spread of Norovirus

Ahead of Norovirus season, which is more commonly known as the winter vomiting bug, Sherwood Forest Hospitals and Nottinghamshire Healthcare are reminding patients and visitors experiencing symptoms of the virus to stay at home and telephone NHS 111 for advice, unless their condition is life-threatening.

The illness can spread easily in public places and its impact in hospitals and care homes can be severe. It can expose already poorly patients and residents directly to infection and can also increase the chances of NHS staff becoming ill.

The most common symptoms of Norovirus include nausea, vomiting and diarrhoea, with some people also having a raised temperature, headaches and aching limbs.

People that have shown signs of these symptoms in the past 48 hours, or have been in contact with someone showing symptoms, are advised not to visit hospitals and care homes, unless their condition is life-threatening.

Sherwood Forest Hospitals' Medical Director, Andy Haynes, said: "If someone suspects that they have Norovirus we ask them to please ensure that they do not visit our Emergency Department or Urgent Care Centre, or other patients in our hospitals, to reduce the risk of passing it on to others."

"Because of its highly contagious nature, Norovirus can quickly spread through a hospital and once it gets into a hospital environment it can be difficult to control, resulting in us having to close wards and restrict visiting. This is something we have not yet had to do this year and obviously we want to avoid having to do as it can be disruptive to our patients."



£4,000 Grant For Bramcote Church



Saint Michael and All Angels Parish Church in Bramcote received some extra help towards their new disabled access to the church on Saturday, thanks to a cheque delivered by the Mayor of Broxtowe. Councillor Hal-

mah Khaled MBE, and Rt. Hon. Anna Soubry MP. Vicar Rev Paul Reynolds, the representative of the church, was presented with a cheque for £4,278 as part of Broxtowe Borough Council's Capital

Grants Scheme, contributing 25% towards the cost for the works. Also present were Bramcote Ward Councillor Martin Plackett and Dr John Hart, St Michael's Resources Committee Chair.

For more information about grant aid visit www.broxtowe.gov.uk/grantaid, e-mail finance@broxtowe.gov.uk, or call 0115 917 7777

Law Firm Promotes Associate

Law firm Rothera Sharp has promoted one of its associates to head up its residential conveyancing department.

Michelle Young, who is based at the firm's West Bridgford office, will lead the 16-strong residential team—one of the biggest in the county. The firm also has seven other offices including its head office in the Lace Market.

Michelle started her career with Rothera Sharp in 1987 at the firm's Wollaton office, transferring to the West Bridgford branch in 2006. She advises clients on all aspects of conveyancing including remortgages and matrimonial property transfers, and she spe-

cialises in assisting clients with shared ownership property. She is also on the panel of several housing associations.

She said: "I am really looking forward to my new role, leading the department to be the best it can be in terms of client care and satisfaction and ensuring that clients receive the highest levels of expertise and service."

Ann-Marie Bowman, Managing Partner at Rothera Sharp said of Michelle's promotion: "Michelle is a very well respected conveyancer and also has the skills and attributes required to lead our conveyancing team. I am delighted that she has accepted this role."

Notts Property Expert to Lead National Team

National property consultants Bruton Knowles has elected Nottingham-based James Bailey as managing partner for a term of three years.

James joined Bruton Knowles in 1998 and has enjoyed a varied professional general practice career in the utility, public and commercial sectors.

He has been responsible for the Nottingham office, located in Castle Gate, since 2006 and under his leadership the Nottingham team has grown in size and standing in the market.

James was also instrumental in opening Bruton Knowles' Manchester office in 2010.

Taking over the helm, James will look to build on the successes of the firm, which – in addition to strong financial growth – has included the opening of several new offices, most recently Worcester. In his new role as managing part-

ner James said: "As we enter a new phase in our long history as a Limited Liability Partnership, we are in an excellent position for the firm's next stage of growth in a market which, although challenging, is full of opportunity."

"My focus going forward is to further build on our values of integrity and professionalism by continuing to provide quality advice to our clients and creating a vibrant environment for our people ensuring we have the strongest possible team in place.

"We enjoy a great strength and depth of talent across all the

disciplines and will continue to build on our growing reputation.”



Housecoal - Smokeless - Anthracite - Logs
Kindling - Appliance Spare Parts

Pre Packed Coal



Visit us at www.fernwood.co.uk
to see our latest offers!

Opening Hours:

Mon - Fri 7-5pm & Sat 7-12 noon

Delivery available on request

**Visit our Cash & Carry at Main Road, Watnall,
NG16 1HA or call us on: 0115 938 9351**

HOME & GARDEN

A Win-Win Situation for Residents



Nottinghamshire homeowners are discovering it's a win-win situation at David Wilson Homes' development Kingston Banks, which is ideally located in the prime semi-rural destination of East Leake.

The collection of three and four bedroom homes is situated next to beautiful open countryside, whilst offering the convenience of nearby amenities and fantastic commuter links on its doorstep, including the close proximity of the M1 and A46. With countryside walks on your doorstep, cosy pubs, coffee shops and independent retailers in the nearby village centre, the develop-

ment is perfect if you want to enjoy a relaxed village lifestyle.

Jason Hearn, Sales Director at David Wilson Homes East Midlands, said: "Kingston Banks is perfectly located to cater to the needs of modern homebuyers as it's in a semi-rural setting with plenty to see and do nearby."

"We conducted a survey recently that shows more than 75% of residents in Nottinghamshire believe the location of a property is the most important aspect when buying a new home and this is most certainly true for our homebuyers."

"Homebuyers want somewhere that

offers easy access for them to get to work and take their children to school, whilst also having a place to escape to at the end of the day – and this is exactly what Kingston Banks offers."

"For those looking to find their dream home at Kingston Banks, I would advise they get in touch with our friendly onsite Sales Advisers to find out more about what's available."

For more information on any David Wilson Homes developments near you, please call the sales team on 0844 811 5544 or visit www.dwh.co.uk.

Allan the Gardner

All tree & fencing Work
Gates supplied & fitted
Grass & hedges cut
Full garden tidy
Borders dug

DISCOUNT
FOR
OAP's

Tel: Allan

0115 822 9489

or 07976 160045

FHP Living Launches Lettings Department

Nottingham estate agent, FHP Living, has continued its onward expansion by strengthening its team in West Bridgford with the launch of a lettings department. Rory Stone, one of FHP Living's most senior lettings consultants, joins the Bridgford Road branch to head up the new division having previously worked in the city centre office.

Rory said: "For the past few years our main aim has been ensuring that the city centre office reaches its target of becoming one of the market leaders in the area – something we have now achieved."

"We've got a fantastic team there covering a multitude of areas which includes The Park, Mapperley Park, Bramcote, Beeston and Nottingham city centre itself. "The stability and success of the

city centre office means that I am now able to move across to West Bridgford full time and focus on our expansion south of the river."

"I am really excited at the prospect of building long term relationships with the people who live in and invest within the West Bridgford area."

The launch of the lettings department in West Bridgford represents part of the firm's wider growth plans having offered property sales in the area for the past six years.

FHP Living is one of Nottingham's leading and largest private residential property consultancies, having been established for more than 15 years and boasts offices at Weekday Cross, West Bridgford and a Student Living department on Shakespeare Street.



Selston Timber Nottingham 01773 861158

Decking

- 3 metre decking - £5.00 each
- 3.6 metre decking - £6.00 each
- 4.2 metre decking - £7.00 each
- 4.8 metre decking - £8.00 each
- 4x2 3.6 metre £6.00 spars
- 4x2 4.8 metre £8.00 spars

Dealers in new timber, a big variety in stock, fence panels, sleepers, concrete post, gravel boards, patio slabs, plywood and much more.

NO VAT TO PAY

THE LITTLE RED GALLERY

www.thelittleredgallery.co.uk

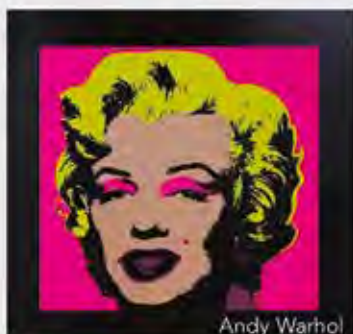
Christmas is coming, so come in from the cold and fall in love with art



Roy Lichtenstein



Ben Jeffery



Andy Warhol



Bob Barker

We are a friendly family run gallery nestled in the beautiful Bailgate, up Steep Hill in Lincoln and in the historic town of Stamford. Now we have an exciting pop up gallery coming to Nottingham! 19-21 Exchange Arcade, NG1 2DD.

art@thelittleredgallery.co.uk stamford@thelittleredgallery.co.uk 01522 589134 01780 762288

KEY BUILDING SUPPLIES LTD

FOR ALL YOUR BUILDING & LANDSCAPING NEEDS...



WINTER IS COMING BE PREPARED

OPENING HOURS

Mon – Fri: 7.30am – 5pm

Sat: 7.30am – 2pm

We stock HEATER GAS, BUTANE, HOUSE COAL, SMOKELESS FUEL GAS, LOGS – DRY SPILT LOGS, BULK BAGS & NETS, KINDLING, ROCK SALT, PARAFFIN, SNOW SHOVELS & FIRE ACCESSORIES. CRANE & TIPPER LORRIES AVAILABLE FOR DELIVERIES

Tel: 01623 861735

Come and visit our DIY Store. Lots of new lines being added daily such as tools, electrical fittings and garden equipment.

Our plumbing range is also being extended. We are very competitively priced and are the only DIY/ Hardware store in the Ollerton & Boughton area.



keybuildingsupplies@hotmail.co.uk www.keybuildingsuppliesltd.com

ROAD C, BOUGHTON INDUSTRIAL ESTATE, BOUGHTON, NEWARK, NOTTS, NG22 9LD



HOT TUB & ACCESSORIES

Chemicals Accessories Hot tubs

Season Spas UK
Hot Tubs - Swim Spas & Accessories

sunstorm
PLUG & PLAY 13AMP
Model: SunStorm

Wow this amazing hot tub comes with (5 seats) 13 amp plug & play family fun spa just the right size for any garden.

17 Hot tubs on display

Retail Price: £3699
Season Spas Special Offer: **£2299**
SAVING £1400

FREE PARKING OPEN 6 DAYS A WEEK
Mansfield:- 66 11 11
Units 3 - 3A Hallam Way, Old Mill Lane, Mansfield Woodhouse NG19 9BG

FENCING

BEECHDALE FENCING LIMITED

Fencing & gate specialists

All type of fencing supplied and fitted

Very competitive rates

We will try our best to beat any written quotation

www.beechdaledencing.co.uk

Call Now on 0115 9401 322 or 0115 9783 798

FRAMING

Framin' 'Eil
WICKEDLY GOOD FRAMES
Newark's Premier Framing Specialist
For all your framing needs

Balderton Hall, Fernwood village, Newark
Nottinghamshire, NG24 3JR
Tel 01636 679603
(Just follow the signs for Fernwood Day Nursery)

DECORATORS

CH DECORATORS

Top class work
Competitive Prices
Free Estimates

Tel: 0115 9235974 • mobile: 07739 797934

BATHROOMS

We Supply Fit & Design Bathrooms

Bubbles Bathrooms NOW WITH OVER 75 BATHROOMS ON DISPLAY

FREE PARKING OPEN 6 DAYS A WEEK
Unit 3 Hallam Way, Old Mill Lane, Mansfield Woodhouse NG19 9BG

Mansfields Biggest Bathroom Showroom

Open Mon-Sat 9.30-5pm Sunday 10-4pm Tel: 01623 661111

CONTAINER SERVICES

Freight Container Services
Located central Newark

Secure self storage shipping containers
20ft/40ft to rent from only £25 + VAT per week

USED, REFURBISHED OR NEW CONTAINERS FOR SALE & HIRE

10ft, 30ft & 40ft Shipping containers available from 15 key UK locations including London, Liverpool, Leeds, Birmingham & Glasgow

www.freightcontainerservices.com
Telephone 07860 570136 or 07831 142401
norman947@btinternet.com
howard.clack@btinternet.com

VETS

UIETUS VET
Caring Pet Euthanasia at Home

- Gentle respectful and understanding
- Nottinghamshire and Derbyshire
- Aftercare services available
- Search Online "Quietus Vet"

Contact us on 0115 784 3456

IF YOU
WOULD
LIKE TO
FEATURE
ON THIS
PAGE
PLEASE
CALL US
01159
313879

TIMBER BUILDINGS

Nottingham Specialised Timber Blds Ltd

Manufacturers of made to measure

Log Cabins

Garden Rooms

Summer Houses

Garden Sheds

NSTB Toytown

Show Site: Unit 1
Hawksworth St, Carlton
Nottingham NG3 2ET
Tel: 0115 9473749
www.nstb.co.uk

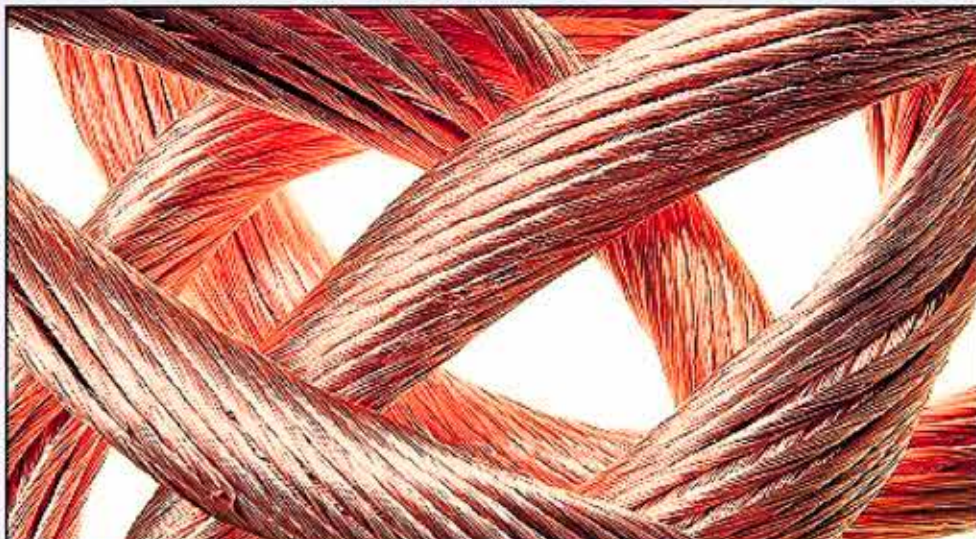
East Midlands Metals

TAKE ADVANTAGE OF INCREASED COPPER PRICES TODAY

**Call now for our
updated prices**

2 Valid Forms of ID Required * For Cash £2 Admin Fee Applies * No Commission

FREE COLLECTION FOR LARGE QUANTITIES



WANTED NON FERROUS SCRAP METALS

Brass / Copper / Aluminium etc. Cable, Swarf - Cutting - Section etc.

01509 235919 or 07850 127234

WWW.EASTMIDLANDSMETALS.COM

Bishop Meadow Road, Loughborough, LE11 5RE