

DERBYSHIRE TOWBARS

Call us for a Fast FREE Quote

Trailer & Towbar specialists since 1997. Local High Quality Service.

Find us at Unit 60, M1 Commerce Park, Markham Lane, Chesterfield

Accessories Shop now doing legal number plates

Tel: 01246 768894

Please say Focus when calling advert

Nottinghamshire Focus

Traynors
MOTORSTORE



Top prices paid for scrap cars and motorcycles. Over 150 vehicles dismantled a week, including over 2000 motorcycles and scooters. Also importers of new car parts. Over 150 repairable salvage in stock.

Opening hours: Mon - Thurs 8am - 6pm
Fri 8am - 5.30pm • Sat 8am - 2pm

email: parts@traynors.co.uk • www.traynors.co.uk

The Boundary, Gorse Lane, Grantham
NG31 7UE • Tel: 01476 563 756

Issue 277



[nottsinfocus](https://www.facebook.com/nottsinfocus)



[#nottsinfocus](https://twitter.com/nottsinfocus)

www.nottsinfocus.co.uk

19 - 25 June

20p
(Where Sold)



FOR MORE INFO VISIT - www.jaguarfairs.com

ANTIQUES in the PARK™

KEDLESTON HALL, DERBYSHIRE, DE22 5JH

this weekend... **JUNE 22ND, 23RD & 24TH**

Antique, Collectors & Vintage Fair set in 820 Acres of National Trust Parkland
Exhibitors from throughout the country * Stalls in Marquees & Outside * FREE Parking * Beer Tent * Live Music

Fri 8am - 12noon - £7.00 Fri 12noon - 5pm - £5.00 Sat/Sun 9am - 5pm - £5.00 Under 16's FREE



Moana Joining the Disney On Ice Team

Audiences will set sail with Moana as she makes her European debut live on ice in Disney On Ice presents Dream Big. The all-new production, produced by Feld Entertainment.

See full story on page 29

Crisis Looming Over Universal Credit

Nottingham people will suffer homelessness and poverty if the Department for Work and Pensions (DWP) doesn't heed the warnings in a damning National Audit Office report into Universal Credit.

That's the view of the City Council's Deputy Leader Cllr Graham Chapman, who has previously called on the Government to halt the full introduction of Universal Credit until previously-identified faults were sorted out. A pause in the process means that full roll-out in Nottingham won't start until October – but hundreds in the city are already receiving Universal Credit.

Councillor Chapman says that there are already local examples of people

being placed into further hardship and debt through Universal Credit, and he is concerned that if the Government continues implementing it in the same way, there will be more families made homeless, needing food banks and placed in a spiral of debt. Councillor Chapman said: "We've only had a limited experience of Universal Credit so far in Nottingham but we're already seeing examples of rent rising along with more debt problems."

Price 20p

ISSN 2052-2606



9 772052 260008

77 >

batemans



2nd Apr - 30th Sept

Open 7 days a week

Sun - Wed 10am - 5pm

Bistro 11am - 3pm

Thur - Sat 10am - 9pm

Bistro 11am - 7pm

Tours 12 noon & 3pm

3rd Oct - 23rd Dec

Open Wed - Sun 10am - 5pm

Bistro 11am - 3pm

Tours 12 noon & 3pm

George Bateman & Son Ltd | Salem Bridge Brewery | Wainfleet | Lincolnshire | PE24 4JE
01754 882009 | www.batemans.co.uk | enquiries@bateman.co.uk

Information

Visit us Online
nottsinfocus.co.uk

Like us on Facebook
/nottsinfocus

Follow us on Twitter
@nottsinfocus

Follow us on Instagram
/nottsinfocus

69a Main Street, Burton
Joyce, Nottingham,
Nottinghamshire, NG14 5ED
Telephone: 01159313879
Email: sales@nottsinfocus.co.uk

Help Hospital Achieve Appeal Target

A Sherwood Forest Hospitals governor is helping to raise funds for the King's Mill Hospital Gamma Scanner Appeal by putting on his boots and walking almost 30-miles – and the

public are being encouraged to join him!

Keith Wallace, who is the hospital's Governor for the Mansfield area, will call at all three of the Trust's hospitals during the sponsored walk, which will take place on the 70th birthday of the NHS on Thursday 5 July. He will start in the morning at Newark Hospital, making his way to Mansfield Community Hospital before finishing at King's Mill Hospital in Sutton in Ashfield around 12 hours later.

Keith, who is a qualified walk leader and runs the local On Your Doorstep Walking Group, is hoping to raise more than £2,000, which will go towards helping the Trust to buy a new gamma scanner to help

diagnose illnesses such as cancer much more quickly. But you can get involved too! The walk has been broken down into three 10 mile sections so that the public and hospital staff of all abilities can join in. You can either walk the full distance, or just one of the sections. The appeal, which is being run by the hospital's charity, aims to raise £550,000 over the next 12 months to fund a new gamma scanner with CT scanning technology for the nuclear medicine department at the hospital. It will enable more than 2,000 patients each year to have advanced scans and revolutionise how they are diagnosed and treated. Keith said: "The NHS 70th birthday is a fantastic opportunity to do something

big and mark the occasion, but also to raise awareness and some money too for the gamma scanner appeal.

"I'm also inviting the public to get involved, walk with me and gather their own sponsorship for this really important appeal. By separating the walk into three sections, it means it is suitable for all abilities and it would be fantastic seeing people walking alongside me for our local hospital." Community Involvement Manager at Sherwood Forest Hospitals, Tracey Brassington, added: "We are incredibly grateful to Keith for approaching us with this absolutely fantastic idea and we really do hope that as many people and local businesses get involved on the day."

If you would like to take part in the walk, you can contact the hospital's Community Involvement Team on 01623 676011 who will be able to give you more information and send you a sponsorship pack. You can also sponsor Keith via his Just Giving page: www.justgiving.com/fundraising/Gamma-Scanner-Appeal

Carlton War Memorial Unveiling

A new war memorial honouring the lives of fallen service men and women is to be unveiled at Carlton cemetery on Saturday 23 June.

The memorial was created thanks to the campaigning of local resident Paul Gunter, whose nephew was killed whilst on duty in Afghanistan.

Paul has raised over £19,000 for the memorial which included a £10,000 contribution from The National Lottery Fund. The council has provided the land and will cover any future costs and maintenance. Councillor Alex Scroggie, ward member for Carlton Hill, has also assisted Mr Gunter with the installation and logistics for the unveiling event.

The memorial will be unveiled at a special ceremony on Saturday 23 June at 10am at the cemetery and will mark the 7th anniversary of the death of Paul's nephew, Lance Corporal Martin J Gill. The Mayor of Gedling will be in attendance at the unveiling and plans are being proposed for a march on the day, by a local cadet group before the ceremony starts. Mr Gunter was recently recognised for his campaign when he won the Good Neighbour Award at the 2018 Pride of Gedling Awards. His determination and hard work stood out to the judges when making the decision.

Leader of Gedling Borough Council, Councillor John Clarke said: "I'd like to thank Paul and Cllr Alex Scroggie for their work to get this memorial in Carlton. It's very important we remember the men and women who lost their lives fighting for our country. This memorial will be a fitting tribute to them all and especially to Paul's nephew, Lance Corporal Martin J Gill and it will ensure will never forget what they did for us."

South Notts Computers
"The Heart of Computers"
www.iphone.applerepairs.co.uk

Phone & Apple Repairs

If you have damaged your iPhone in anyway, we can fix it in super quick time. We are guaranteed to beat quotes from Apple on any repairs and you are getting the same great quality fix by a qualified and experienced engineer

Cracked or broken iPad? We can fix it!

Broken iMac or Macbook? We can fix it!

If you need a quote or to book a repair please give us a call on:
0115 9147066

Microsoft REGISTERED Refurbisher
Microsoft Technology Associate
iMend Mobile phone repairs

LJA FACILITIES

With over 50 years' of experience we provide the highest standard procedures of Asbestos Removal, Thermal Insulation & Industrial, Commercial Cleaning as well as many other services

LJA Facilities are not aiming for large profit margins as some of the larger companies in the industry, but that doesn't mean that our standard of work is not good. We are very strong believers in health and safety and use this to provide work safety and use this to provide work safety and professional standards for our clients.

Our Services

- Advice & Consultancy • Asbestos Removal • Asbestos Encapsulation
- Asbestos Decontamination • Asbestos Sample Collection
- Removal of Asbestos Fly-Tipping
- Removal of Asbestos Sheeting and Re-Clad • New Build Cleans
- Soft-Strip Demolition • Needle Sweeps • Corrosion Protection
- Fire Proofing • Industrial & Commercial Cleaning
- Site Clearance and Investigation
- Industrial, Commercial & Domestic Clearances

Environment Agency
Trading Standards APPROVED
Checkatrade.com Where reputation matters
fsb MEMBER

Email: info@ljafacilities.co.uk
www.ljafacilities.co.uk

Tel: 01636 918283
M: 07471 959298
M: 07833 254378

CAUDWELL'S MILL
Where tradition meets the future

Caudwell's Mill is set in the beautiful Wye valley in the glorious Peak National Park with Chatsworth House and Haddon Hall nearby.

Parties welcome at any time
Pre-booked adult and school parties are guided by our skilled staff.

FREE cars and coach parking in our car park on Woodhouse Road.

Glass Gallery • Mill Forge • Woodstop
Stone Mason • Upholsterer
Country Parlour Café & Craft Shop

Find us: Caudwell's Mill Rowsley, Matlock, Derbyshire, DE4 2EB, United Kingdom
Tel: 01629 734 374
Email: enquiries@caudwellsmill.co.uk

ITA GROOMS
Dog Grooming in your own home

- City and Guilds in Dog/Cat Grooming
- City and Guilds Animal Care 2 x Merit Qualified

Registered Pet Nutrition

01949 842306 | 07711 564441
07544 400535
www.itagrooms.com

The Chef to Watch

Alex Bond's first solo venture Alchemilla in Nottingham has been ranked 53rd in the UK at the 2018 Estrella Damm National Restaurant awards at London's Hurlingham Club on Monday evening.

Alchemilla has been open just 10 months so the accolade is huge as Alex Bond said: "To be ranked alongside such incredible restaurants is a huge compliment and proof that anything is possible. I am so proud of our team for the tremendous amount of hard work that they have put in over the last year. Without their passion, dedication and work ethic it wouldn't have been possible, so this award is thanks to them."

As well as being ranked in the top 100, Alex was also a finalist in the 'Chef to Watch' category which was eventually awarded to Tom Brown of Cornerstone in London. For the full top 100 list please visit www.bighospitality.co.uk



Youth Football Team Encourage Recycling

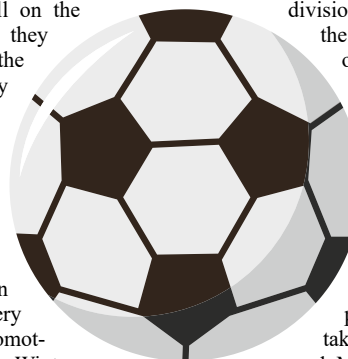
It's been a fantastic season for Burton Joyce FC Under 9's football team (supported by Veolia) as they celebrate winning the league. This season saw them 'go green' in both kit colour, and environmentally as the team have helped encourage their friends and families to recycle.

When not training and playing, the team became mini recycling champions and took home Nottinghamshire's recycling information and the club gave regular reminders to all parents and supporters about what can be recycled in Nottinghamshire.

As well as the Burton Joyce FC annual club presentations on 10th June, having won division 1 the team were invited by the league to attend the end of season presentation at

the Royal Concert Hall on the same afternoon where they were presented with the league winners trophy and individual trophies too.

Glenn Akerman, Team Manager for Burton Joyce Under 9's said: "The lads have done fantastically well this season. They started in division 2 winning every game before being promoted to division 1 for the Winter league. They showed true commitment and kicked on, becoming champions of the



division remaining unbeaten in the process! We're very proud of them. Thank you to Veolia for supporting the team and helping them to become 'green' in more ways than one."

If you would like to 'Go Green' too and learn more about recycling in Nottinghamshire why not book a place on a recycling tour, take part in a free Make Do

and Mend workshop or download the free recycling guide at www.veolia.co.uk/nottinghamshire.

Protecting Our Local Protectors

Nottinghamshire Police and Crime Commissioner Paddy Tipping have welcomed the Government's pledge to offer greater protection to police dogs and horses by backing new legislation.

The Animal Welfare (Service Animals) Bill has been published in Parliament by North East Hertfordshire MP Sir Oliver Heald and had its second reading on Friday 15 June.

It follows a high-profile campaign following the injury of police dog Finn which was stabbed while pursuing a suspect with his handler PC David Wardell last year.

The proposed legislation, which will remove a section of the current law of self-defence often used by those who harm a service animal, has now been backed by the Department for Environment, Food & Rural Affairs (Defra) bringing it one step closer to reality.

Alongside the government's commitment to increase maximum sentences for animal cruelty offences to five years in prison, the proposed law will ensure those who harm service animals receive just punishment.

Welcoming the move, Mr Tipping said: "This is great news for all our hardworking service animals and their handlers who confront danger and put their own lives at risk for the safety of others."

"I've always supported Finn's Law. The need for this additional layer of protection was made all the more serious when our own police dog Quantum was injured in a similar attack."

Sir Oliver Heald, who presented the Bill, said: "I am delighted that the campaign for Finn's Law has gained the support of the Government."



Come and meet the team that care

Be sure to discover how our unique technology is setting a new standard in consistently delivering special experiences for the residents of our care homes at:

To find out more please call or pop in for a chat

Churchfield

01623 549830

The Oaks and Little Oaks

01636 880304

Charnwood

0115 8284243

The Sycamore and Poplars

01623 549832

Lawn Park

01623 549831

Tudor Grange

0115 8283698

Old Vicarage

01909 521508

www.fshc.co.uk

Nursing, residential and dementia care available



Brand new and used Stairlifts from £800 (fitted)

All stairlifts come with a parts & labour warranty

NEXT DAY FITTING Available

Latest models for peace of mind

- Established 1987
- Main Dealer
- Straight
- Curved
- New • Used

CARLTON BASED COMPANY

www.liftecld.co.uk

**CALL ROGER AT LIFTEC
0115 987 5218**



Leonard Design Soars in Prestigious National Rankings

Nottingham-based Leonard Design Architects is celebrating after securing a spot on the prestigious AJ100 list for the second year in a row and jumping up 18 places to rank at number 82.

Published annually by the Architects' Journal since 1995, the AJ100 ranks the largest architectural practices in the UK. It is largely regarded as a key measure of success and the industry's most authoritative list.

Leonard Design is an award-winning global architectural practice headquartered in Nottingham, with three further offices in London,

Kuala Lumpur and Sydney, Australia. The practice has a growing portfolio of projects including the Broadmarsh Bus Station and Sneinton Market in Nottingham, Bispevika in Oslo and the Jam Factory in Melbourne. David Leonard, director at Leonard Design, was at the Architects' Journal Annual Members' Dinner and Awards ceremony in London where the winners were announced last Tuesday.

He said: "The AJ is one of the leading titles in our industry so we're thrilled to be recognised for the second year running."

"It's been another busy year for the practice as we have grown to more than 80 staff across our four offices and expanded our clients and presence in countries such as Norway and Korea, along with new projects in Vietnam and Germany. Ranking in such a respected national list really is a testament to the hard work of our brilliant team and we are confident that the coming year will see the practice continue to flourish."

For further information visit www.leonarddesignarchitects.com or follow @leonard_design on Twitter.



L-R David Leonard, John Morgan, Ian Staples and Hin Sim, directors at Leonard Design

A Preservation Project Like No Other

A new comprehensive study by The Mammal Society, which reveals that a fifth of Britain's wild mammals 'at high risk of extinction', reaffirms that urgent action must be taken, otherwise Britain stands to lose its precious species. But now, a ground-breaking idea from the southern hemisphere may offer a lifeline. Ever heard of the Isle of Hedgehog? Maybe not, but if 82% of Britons get their way, a vision inspired by a conservation project in New Zealand may result in the British Isles becoming predator-free safe havens for endangered animals in order to preserve national creatures.

A new initiative by New Zealand's Department of Conservation to protect its national icon, the kiwi bird, by creating predator-free islands where the birds can roam free without being harmed by animals that hunt them.

Old Mout commissioned a survey on British attitudes on wildlife, the research

of 1,000 Britons found that over 82% would be in favour of similar drastic action to help save its endangered creatures in Britain, including relinquishing land to create safety havens and sanctuaries to preserve the likes of hedgehogs and red squirrels.

Old Mout teamed up with wildlife-expert Michaela Strachan, and charity, Kiwis for Kiwi, to create a short documentary film called The Forgotten World. The short film follows Michaela traveling to New Zealand's Kapiti Island – an isolated sanctuary for the nation's most endangered birds.

While in the remote and wild Forgotten World, Michaela witnesses first-hand, the positive results of the predator-free island with a kiwi population thriving in the absence of predators. The documentary gives an look at a project to restore the forest and freshwater ecosystem as closely as possible to their pre-human state.

Barnstone Residents Get Arty to Commemorate the War

Local residents in Barnstone are being invited to get creative and be part of events to commemorate 100 years since the end of the First World War.

The Royal British Legion (Granby Barnstone and District Branch) has launched a Grand Art Competition with the theme of 'The Poppy'. With backing from local company Tarmac through its Cement Plant at Barnstone, the competition is open to all local residents, uniformed youth groups, art groups and school groups in three age ranges – 11 and under; 12-18; Adult.

choose one of three art categories to get creative with the Poppy theme – drawing/painting/mixed media; photography/graphic design; textiles/sculpture. The competition will culminate in a Grand Art Final and Exhibition in Granby Village Hall on 29 and 30 September.

Andrew Charlett of the Granby Barnstone and District Branch of the Royal British Legion says: "This initiative has raised awareness within the local community of the dedication and sacrifice made by local men when they enlisted during the period from 1914 - 18 to fight to protect the freedom that future generations have enjoyed. Many of these men were employed at the cement works in Barnstone, and over the many years that it has been in operation there has always been a close tie with the local community."

"All of the funds raised through this competition will go towards the work of the Royal British Legion, bringing hope and support to serving individuals, veterans, and their families across the UK and beyond."

Emily Brown, Acting Head Teacher of Langar Primary School said: "We are delighted to be able to take part in this, as the competition links so well with our school values. The children have thoughtfully reflected on World War 1 and shown the upmost respect when talking about the sacrifices made."

Chris Stephens, Barnstone Cement Plant Manager, went along to Langar Primary School near Bingham to launch the competition last week. He said: "This competition encourages people from across the local community to play their part in commemorating this important milestone. We are delighted to be able to support the Royal British Legion and we look forward to seeing the array of art talent on display in September."

Entrants



5
YEAR
Barnsdale
LIFESTYLE RETREAT

**Flexible
Guaranteed
Holiday Ownership
at a Fixed Cost
for 5 Years**



**ONE OFF PAYMENT OR MONTHLY
PAYMENT OPTIONS
NO - MANAGEMENT FEE TO PAY!**

**The perfect retreat
for your whole family...**

- Beautifully manicured grounds in a glorious location
- Concessionary use of extensive leisure facilities for you and your family all year round!
- Discounts on food, drinks, spa treatments and hotel rooms



Barnsdale

01572 756824

e: retreat@barnsdalehotel.co.uk
www.barnsdalehotel.co.uk

S4rb Team Digs Deep to Give Waste Ground a New Lease of Life

Colleagues from Nottingham software specialist Solutions for Retail Brands (S4RB) are preparing to roll up their sleeves to help transform an area of waste ground into an oasis for Nottingham Community Housing Association (NCHA) residents to enjoy.

S4RB is taking over the site on All Saints Terrace in Radford, owned by the NCHA, in June as volunteers clear away debris, mend fences and cut back hedges and weeds. The team will leave behind a 'blank canvas' for supported housing tenants to create their own garden, as well as providing building materials such as pallets for decking, compost, top soil and tools for up-cycling.

Mark Fowkes, director at S4RB, said: "We're looking forward to taking what is currently an unusable piece of land and creating a welcoming outdoor area for residents, particularly with summer just around the corner. We would also like to thank local builder's merchants John A Stephens for its kind donation of pallets, rubble bags and bags of pebbles; these will play a crucial role in the development of the space."

"Our charity of the year is Mind, so this feels like a fitting project to support that because gardens are known for helping with mental wellbeing. I think it will bring us closer as a team, while also broadening our collective knowledge of mental health issues."

Dave Pearce, manager at NCHA, added:

"We pride ourselves on providing secure, independent living and this new space will allow our residents to learn new skills, get outdoors and enjoy the fulfilment of gardening and growing their own produce."

"I look forward to working with the team at S4RB to deliver a project that will enhance the wellbeing of some of Nottingham's most vulnerable people."

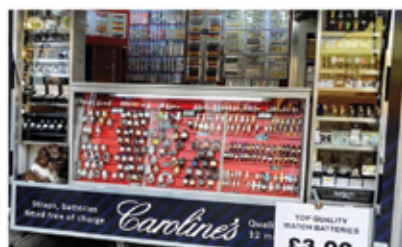
S4RB is based at Karlsruhe House, Queensbridge Road and also has offices in the US.

S4RB



Visit Boston Market every Saturday and Wednesday in the Market Place

With additional stalls in Bargate Green every Wednesday including the Auction



8.30am to 3.30pm

Boston hosts a wide variety of shops, restaurants and cafes, come along and see what's on offer



www.visitbostonuk.com

markets@boston.gov.uk

01205 314200

It's not just the
Holiday Home
that's Important...



Come down
and ask for JAMES.
Let me show you around our
Beautiful Award Winning Park
Or
Alternatively Call:
07565 678045 / 01754 896043
For more Information or to
Book an Appointment
james.lunn@parkdean-resorts.com

It's the Park!

Your Escape From...
Only £29,995

Funding options available

2011, Willerby
Salisbury, 3-Bed



- Double Glazed / Central Heating
- Easy Let Options Available
(We take care of everything for you)
- No fees until 2019
- Choice of Pitches
- 45 Week Season Open
Christmas & New Year
- Full Move in Inventory

Call - James Lunn
01754 896043 | 07564 678045

News in Brief

Learning Disability Nurse Awarded MBE

Helen Laverty, a University of Nottingham nursing lead, has been appointed a Member of the Order of the British Empire (MBE) for her expertise in learning disability nursing and her pioneering work in shaping Government policy on health and social care.

Helen, who has been influential in the education and development of more than 700 learning disability nurses at Nottingham, is a passionate advocate and supporter for those living with a learning disability.

Alongside her academic responsibilities she founded Positive Choices – the only national network of learning disability students, academics, employers, people with a learning disability and families in the UK.

Professor Shearer West, Vice Chancellor of the University of Nottingham said: "Helen has been an academic educator of learning disability nursing students for over 20 years, influencing the profession at its very roots."

"Her firm belief in equality and inclusion for all and her passion for nursing has led to her becoming an influential advocate in this field- shaping national policy and championing the rights of those with learning disabilities."

Helen joined the University in 1994 as a nurse teacher and is now the Professional Lead for Learning Disability Nursing within the School of Health Sciences.

She founded and facilitated Positive Choices in 2004 with the motto that 'together we are better' and as a result she has helped shape the national debate regarding health and social care for individuals with learning disabilities and their families.

News in Brief

'Outlaws' to Raise Money for Nottinghamshire Hospice

Nottinghamshire Hospice is on the hunt for 'criminals' to take part in their fundraising Jail and Bail event on 13th September.

The fundraising event, badged as part of the Hoodwinked project, will see local business people and other personalities arrested by the Sheriff of Nottingham, then tried off the criminal court in the National Justice Museum, where they will join Robin Hood in the dock, before being thrown in the cells.

Nottinghamshire Hospice Project Officer Michelle Thompson said:

"Their crimes will be determined by their colleagues and might include such heinous offenses as having too many shoes or not enough turns in the office tea run. "Legend has it that Robin Hood was found praying behind a screen in St Mary's Church by a monk, who subsequently tipped off the Sheriff of Nottingham, who promptly arrested him. In our re-enactment of this, we are inviting sponsors and other key hospice supporters to enter a participant in the event as a defendant.

"We will release the list of the Sheriff's most wanted in Nottingham during July, which will of course include Robin Hood."

The Jail and Bail event is part of the Hoodwinked Project, in which a trail of giant robin sculptures sponsored by businesses and painted by Nottinghamshire artists will take place across the city centre over the summer.

The Hospice Fundraising team will be on hand to help with setting up a JustGiving page and other fundraising materials to help the 'de-

fendants' as they aim to reach their bail fee.

If you would like to take part as a defendant, please get in touch with Michelle Thompson at Not-

tinghamshire Hospice on 0115 910 1008 ext 250 or email michellet@nottshospice.org by 29 June.



Regional Unemployment Remains below the National Average

Unemployment in the East Midlands continues to be lower than the national average according to recent figures. Monthly data published by the Office for National Statistics showed unemployment in the region of 4.0% for the three months February to April 2018, compared with 4.19% for the UK. The regional figure was down 0.1% on the three months of November to January.

According to the ONS, the number of people unemployed in the East Midlands for the period from February to April was 96,050, down 2,176 from the 98,226 recorded for No-

vember to January.

The number of people shown as in work for the three months February to April was 2,303,383, up 27,074 from the 2,276,309 of the previous quarter and 53,191 higher than a year ago.

Scott Knowles, Chief Executive at East Midlands Chamber*, said: "Today's figures confirm once again that the East Midlands is a serious contributor to the national economy; the region is continuing to create jobs, opportunities and wealth despite the uncertainty of Brexit and the Government's ongoing under-investment in the region. "If

we can achieve these figures despite receiving only 60% of the national average for infrastructure investment – which includes road and rail improvements and internet and mobile connectivity – just think what we could achieve if the Government were to recognise the importance of this area."

Figures from the ONS showed the number of people claiming Jobseeker's Allowance across Derbyshire, Nottinghamshire and Leicestershire in May was 36,495, down 600 compared with April.

Nottingham Specialised Timber Bldgs Ltd

Manufacturers of made to measure



Log Cabins



Garden Rooms



Summer Houses



Garden Sheds

NSTB Toytown



Show Site: Unit 1
Hawksworth St, Carlton
Nottingham NG3 2ET
Tel: 0115 9473749

www.nstb.co.uk

The Sewing Room

Clothing Alterations Service

Ladies & Gents Trousers, Dresses, Jackets etc...

WE HAVE MOVED

Please visit us at...

Barnes Wallis House, Barker Gate, Ilkeston, DE7 8DS.



Just 2 minutes walk from Tesco

0115 930 5290



www.faithinfamilies.org



Find out more about adoption at one of our information evenings every

First Thursday of the month

6.00pm to 7.30pm

7 Colwick Road, West Bridgford, NG2 5FR

enquiries@faithinfamilies.org

0115 9558811

[FaithinFamiliesNotts](https://www.facebook.com/FaithinFamiliesNotts)

@FIFnotts



01652 650291

Nottinghamshire Musicians Perform With World-Renowned Orchestra

Tickets for the event are FREE to book and audiences just pay what they can on the night. Book online at www.inspireculture.org.uk/able22.



ROYAL AIR FORCE REGIMENT RESERVES RECRUITING NOW

f /rafrecruitment **E @RAF Recruitment**



Mr Amar Alwitry 

Mr Amar Alwitary
Consultant Ophthalmologist
Mids-Eyecare.co.uk
Eye Surgeon of the Year - East Midlands

Or call Circle Private Patients on 0115 924 8446 Email: info@mids-eyecare.co.uk
For appointments call Woodthorpe on 0115 9932015 or Spire on 0115 9377801

CALL 01159 314380

Celebrate Independent Bookshop Week

Independent Bookshop Week (IBW), taking place



16-23 June, is an annual celebration of independent bookshops around the UK that highlights the important part that 'indies' play in their communities, their creativity and the excellent, personal service they provide for customers.

This year's Independent Bookshop Week (IBW), the annual campaign of independent bookshops in the UK and Ireland is fast approaching, with events planned nationwide. With over 400 independent bookshops confirmed to take part, the week-long campaign looks to be bigger and better than ever, including exclusive Philip Pullman events, Faber's 90th birthday and Pan Macmillan's Shore 2 Shore tour, led by Carol Ann Duffy. Throughout the

week, IBW will be highlighting bookshops' fantastic contribution to the high street, by shining a light on the people behind the bookshops – the Bookshop Heroes. Bookshop fanatics will have a chance to let their local indie know why they are their hero, with merchandise in all participating bookshops. Look out for the branded superhero capes by Quarto and IBW aprons by Nielsen for the perfect photo opportunity, and don't forget to upload your image to Twitter with the hashtag #Bookshop-Heroes. The IBW Book Award winners will be announced on 15 June, as chosen by a panel of judges, including former BA President, Rosamund de la Hay and current BA President Nic Bottomley, Joanna Cannon, author and Sandy Mahal, UNESCO Nottingham City of Literature, plus many more.

For more information on events visit www.indiebookshopweek.co.uk

Celebrate Nottingham's Practitioners

A one-of-a-kind wellbeing event is taking place in Nottingham on Sunday 24 June, which aims to provide the city's residents with an affordable, locally created, inspirational retreat event.

The four hour

'Let go & flow' wellbeing retreat day special is on from 11am - 3pm at Primary, 33 Seely Road, Nottingham, NG7 3FZ.

Primary is an artist-led space and is also home to the Small Food Bakery.

Tickets for 'Let go & flow' which showcases Nottingham's independent well-being talent are selling fast, priced at only £45 or a special rate of £80 for two. The ticket includes a nourishing lunch and access to a number of masterclasses where people can experience new therapies and take home new skills.

The event has been curated by Shona Munro, founder of Skin Elixir, Nottingham's handmade, multi award-winning, cruelty-free, organic skincare brand and chef Dena Smiles who runs 'Probiotic Love'.

The day will start with an introduction and a probiotic 'good mood and gut health' cocktail. Over the course of the event, participants can take part in a 45-minute yoga workshop and choose three 45-minute wellbeing workshops. Participants will leave with a goodie bag of practitioner offers and a sample of Skin Elixir's Organic Frankincense & May Chang Moisturiser, which recently won Editor's Choice in the prestigious International Beauty Shortlist awards 2018.

Organiser Shona Munro said, "Modern life can feel overwhelmingly stressful, so it felt like a really good time to put on a wellbeing retreat day to provide people with wellbeing 'antidotes' and new skills to combat stress levels."

For the full programme, a note about each Practitioner and to grab your ticket visit www.tickettailor.com/events/letgoandflow.

Let go & Flow



Traynors MOTORSTORE

Top prices paid for scrap cars and motorcycles including many prestige and exotic vehicles. Over 150 vehicles dismantled a week, including over 2000 motorcycles and scooters.

Also importers of new body panels, bumpers, headlights, radiators, windscreens and towbars. Over 150 repairable salvage in stock.

Opening hours: Mon - Thurs 8am - 6pm
Fri 8am - 5.30pm • Sat 8am - 2pm

tel: 01476 563 756 email: parts@traynors.co.uk
www.traynors.co.uk



The Boundary, Gorse Lane, Grantham NG31 7UE





Luxury Award Winning Lodges in the Derbyshire Peak District



There is **no better place** than the Derbyshire Peak District to enjoy a short break or a family holiday.

Darwin Forest is situated between Matlock and Bakewell and is ideally located in the Heart of England. The park has been a finalist in the Visit England Awards for Excellence and received the Visit England Gold Award for excelling in hospitality and service. Darwin Forest combines luxury self-catering holiday accommodation with fantastic onsite facilities including a swimming pool, gym and spa. The woodland setting creates a peaceful location from which to fully relax and get closer to nature. It is the perfect place to stay for visiting scenic countryside, stately homes including Chatsworth House, picturesque villages and a wide range of local attractions.

- ▶ Award winning 5 star park
- ▶ Lodges sleep from 2 - 8 people
- ▶ Perfect for couples, families & celebrations
- ▶ Spa lodges include private hot tubs



- ▶ Indoor pool, spa, gym & beauty rooms
- ▶ Onsite restaurant & take-away service
- ▶ Stunning woodland location
- ▶ Fantastic for visiting the Peak District

- ▶ Activities including archery, snorkelling and bodyzorb
- ▶ Huge soft play centre
- ▶ Mini golf, tennis & games room
- ▶ Cycle hire, nature trails & woodland walks



To **find out more** and to **book online** visit
www.darwinforest.co.uk

Darwin Forest
LUXURY LODGE HOLIDAYS



Linda Lancashire

07764 466381

01773 762675

E: contact@lindalancashire.co.uk

www.lindalancashire.co.uk

Aries

Work pressures will begin to ease and you are strong enough to deal with anything that comes your way, even if you sometimes doubt your own abilities to turn things around with enough time to spare. A surprise visit from someone who belongs in your past may turn out to be more of a hindrance than a blessing. You are well advised to play your cards close to your chest and refuse point blank to discuss your personal and financial affairs.

Taurus

Work pressures will begin to ease and you are strong enough to deal with anything that comes your way, even if you sometimes doubt your own abilities to turn things around with enough time to spare. A surprise visit from someone who belongs in your past may turn out to be more of a hindrance than a blessing. You are well advised to play your cards close to your chest and refuse point blank to discuss your personal and financial affairs.

Gemini

There is a lot going on affecting your career, business life and personal circumstances and a few nagging worries are still lurking at the back of your mind concerning your money situation and how you are expected to honour commitments. This is an excellent time to finalise a legal agreement of property matter, but avoid getting into a family row regarding an ongoing rift that does not seem to show much signs of settling down.

Cancer

You will be keen to move on because you are secretly seeking some sort of financial or personal breakthrough. If you are finding situations or people to be slow and dragging their heels causing all sorts of frustrations and delays, put it down to incompetence on their part. Love and romance is well starred and is showing signs of improvement, but it's also important that you reach compromises with your partner so that you are both happy that your needs are being met.

Leo

At long last you are going to be able to do all the things you have been dreaming about and will see your way clear from escaping from a difficult situation in order to start a new life. Although you may feel a lot is expected from you, this is not the time to start behaving in a melodramatic manner because much is at stake and time is of the essence. Your popularity is on the increase, so you can look forward to numerous social invitations arriving soon.

Virgo

You need to rest more and start thinking about yourself and your own needs rather than feel guilty about not being able to keep up with everyone else. It's important that you re-shuffle your priorities and realise that if you do not look after yourself, then no one else will. News you have been anxiously waiting for finally arrives allowing you to make some fresh new plans regarding numerous matters of the heart.

Libra

This is an excellent time to finalise agreements and put a verbal contract into writing. Many of you may still be suffering from health problem or feeling exhausted and jet lagged. A long-standing admirer may contact you and invite you out but be prepared for what happens next, as you may quickly become more romantically involved than you expected and feel pressured into making a commitment before you are ready.

Scorpio

If you try to please one person then you are bound to offend another and as you can do nothing about any of it, why waste your time trying? Disputes over financial issues may cause frustrations but they won't last long as you come up with some great ideas which are likely to work perfectly. An unexpected weekend break or spa day could provide the perfect tonic for those who are feeling tired and frayed around the edges.

Sagittarius

Life can change in a split second without any prior warning so be prepared, as you never know whom you will meet or what surprises will unfold as a consequence of a decision you recently made. If you are still searching for a change of lifestyle, new romance or career break, take heart, everything happens in its own good time and you won't be disappointed as long as you learn to be patient and think carefully before you commit to anything new.

Capricorn

A confrontation with a loved one or work colleague may spiral out of control over something trivial. You are known for being fiery and acerbic at times, later regretting your outburst. A past relationship that was going nowhere may suddenly resurface but be aware of the perils it may bring to you if you choose to go back into familiar territory. Seek the advice from those you trust if you are unable to decide what to do next.

Aquarius

Never doubt in your confidence that you are a good person and more than capable to fend for yourself and make your own choices. New beginnings are on their way requiring great adjustments from you because everything in life changes and nothing remains the same. New investments look promising so take a chance and you could end up making a lot of money that will help top up your pension pot.

Pisces

After what has proved to be a most eventful time both personally and professionally you are approaching a major crossroads in your life that will lead to you making important decisions relating to money and romantic matters. Being in control is important to you so take the reins and move forward positively. Be honest with yourself and those closest to you so that there is no risk of misunderstandings. So step forward with vigor a brand new chapter is about to unfold.

Spectacular Cake Donation to Community Fun Day

Oak Furniture Land, the UK's largest retailer of solid hardwood furniture, donated a spectacular cake replica of a bouncy castle complete with edible figurines of children playing to Selston Leisure Centre, at the grand opening of its first store in Sutton-in-Ashfield, on Saturday 9th June.

Oak Furniture Land commissioned the amazing confectionery creation, to support the leisure centre's Community Fun Day. The cake is an exact copy of their bouncy castle, which is one of their most popular children's party attractions. The organisers of the Community Fun Day took centre stage at the store opening as the new

store team presented them with the cake. Tracey Jeffery, General Manager at Selston Leisure Centre said: "We would like to thank everyone at the new Oak Furniture Land store for the cake donation. The cake replica of our popular bouncy castle was a wonderful gesture to support and highlight our Community Fun Day. We are dedicated to helping keep the local community active, healthy and above all, happy."

The amazing cake sculpture was created by Rosie Cake Diva from Channel 4's Extreme Cake Makers. Rose is famous for her realistic cake creations, including a 6ft grenadier guard for Armistice Day.



The first ever UK & Ireland Tour of Titanic The Musical, directed by returning director Thom Southerland, makes its maiden UK and Ireland tour this year, visiting the cities and communi-

ties whose forebears built, manned and sailed on the famous ship. The tour will visit the Theatre Royal Nottingham for one week only from Monday 2 to Saturday 7 July.

Having received its UK premiere in 2013 at Southwark Playhouse, the production returned to London in 2016 for an 11-week season at the Charing Cross Theatre, where it won overwhelming critical acclaim.

In the final hour of 14th April 1912, the RMS Titanic, on her maiden voyage from Southampton to New York, collided with an iceberg and 'the unsinkable ship' slowly sank. It was one of

the most tragic and infamous disasters of the 20th Century. 1517 men, women and children lost their lives.

Maury Yeston commented on the cast of the UK tour: "The idea that a troupe of actors will tour this show in the UK, birthplace of the ship, where the workers of Belfast, the cabin boys and maids and stewards from Liverpool, the officers and crew, the stokers and stevedores from the Midlands all created a miraculous floating city, means more to me than I can say. I am touched that, musically, Titanic will finally be coming home, sung by the grandchildren and great-grandchildren of its builders – touched, and forever grateful."

Theatre Royal Nottingham
Monday 2 – Saturday 7 July 2018, £18 - £39.50 plus discounts for Royal Members, Under 16s, Go Card holders and Groups, visit: www.trch.co.uk or call 0115 989 5555 to book.

Nottingham Legend Announces Cornerhouse Bar

A new bar has been announced at Nottingham's leading leisure and entertainment complex, The Cornerhouse, to replace the former Saltwater bar and restaurant.

The ex-professional boxer, Carl Froch MBE has revealed plans to launch a new venue called Alto on the second floor of The Cornerhouse this summer.

The new bar is part of a joint venture with John Glover and Marc Brough, who have a wealth of previous experience in the bar and restaurant scene.

As part of the renovation, Alto will boast four new bars and a newly designed rooftop terrace with sweeping views of the Nottingham skyline, whilst offering cocktails and an exciting new menu.

Charlie Truman, centre executive for The Cornerhouse, said: "We are delighted to welcome Alto to The Cornerhouse, and we are very much looking forward to working with the new team."

"The new bar is sure to bring a fresh and exciting atmosphere, making the most of the great space and one of the city's only rooftop bars, as we approach the summer months."

Commenting on the new launch, Marc Brough, director of Alto said: "Myself, Carl and John are all excited to be launching this new venture together. The Cornerhouse is a staple part of the city and for us it's great to bring our new ideas and plans to it."

"We can't wait for the people of Nottingham to see what we have instored for Alto, it's sure to be a great place to enjoy some delicious food and cocktails in the sun this summer."

Follow the progress of Alto on its Instagram page @AltoNottingham, and keep updated with The Cornerhouse and its venues at www.cornerhousenottingham.co.uk.

BIG THINK

BUSINESS INVESTMENT FOR GROWTH

Are you looking for financial support to grow your business where you are unable to meet the banks' lending criteria?

Would a loan based on achievement of milestones help?

Pathfinder provides loans to those who may not meet the banks' lending criteria but are able to demonstrate they have an ambition to grow.

Under what terms are loans available?

- Loans will be for the purpose of achieving agreed milestones on the pathway to becoming a viable growth business.
- Commercial interest rates; arrangement and monitoring fees; security will all be based on risk profile.
- Repayable over a period of up to 3 years.

The Think Big Pathfinder

Support for start up or early trading businesses in Newark & Sherwood

Loans are likely to range from £5k to £25k (typically £5k to £10k)

How do I apply?

We want to make it as easy as possible for you to put your business case forward for a loan.

Call Veronica Dennant

on 01636 655260,

Economic Growth

on 01636 655277 or email

info@investnewarkandsherwood.co.uk



Quick access to bone and joint specialists

A fast diagnosis and treatment at Spire Nottingham Hospital can get you back on your feet sooner.

Why Spire Nottingham Hospital?

- Consultant- led treatment at appointment times to suit you
- MRI scans from £350
- A guaranteed all inclusive fixed price for self- funding patients*
- Finance options available

Why wait?

Book your consultation today

🔍 Search 'Spire Nottingham'

☎ Call 01158 283 817



Spire

Nottingham Hospital

Tollerton Lane, Tollerton, Nottingham, NG12 4GA

* Self-pay, fixed price packages are subject to the Spire Patient Terms and Conditions available at www.spirehealthcare.com/legal/terms-and-conditions/



Looking after you.

City Leaders to take on 'The Sheriff' for Nottingham Children's Hospital

The Leader of Nottingham City Council and the Chairman of Invest in Nottingham have joined forces to take part in Nottinghamshire's biggest cycling event.

Paul Southby, Partner at Geldards LLP as well as Invest in Nottingham's Chairman, and Councillor Jon Collins, Leader of Nottingham City Council, will both take on 'The Sheriff' – a gruelling 125-mile route which is part of the Cycle Live event on Sunday 24 June 2018.

The pair have joined forces to raise money for the Big Appeal for Nottingham Children's Hospital, which aims to raise a total of £4m to help young patients. The appeal is run by Nottingham Hospitals Charity, the official three-

year charity partner for Cycle Live (formerly called the Great Notts Bike Ride).

Paul Southby said: "I'm really happy to support the Big Appeal and to try and help make a difference for young people being treated at Nottingham's great hospitals. I had to have quite a lot of ur-



icantly in the recent BBC series Hospital, which was shot at the QMC, and the financial pressures faced by the hospital and their impact on treatment were a real eye opener, not to mention the fantastic pioneering work being done here in Nottingham. It's a privilege to be able to try and give something back."

Cycle Live participants can choose between a 25, 50, 75, 100 or 125 mile route. Nottingham Hospitals Charity has a limited number of free places available to participants who commit to raise £150 or more in sponsorship. Other local businesses taking part include J Tomlinson Integrated Building Solutions in Beeston, whose



Paul Southby

gent treatment at the QMC eye casualty department earlier in the year, and was very grateful that the NHS was there when I needed help.

"One of my close colleague's mother also featured signif-

17-strong cycling team will take on the 25-mile 'Robin Hood' route to raise money for the Big Appeal.

Nigel Gregory, Director of Development at Nottingham Hospitals Charity, said: "It's fantastic to see local busi-

nesses and leaders joining together to support such a worthy cause by taking part in this huge cycling event.

For more information or to register, please go to www.nottinghamhospitalscharity.org.uk/events or call Nottingham Hospitals Charity on 0115 962 7905

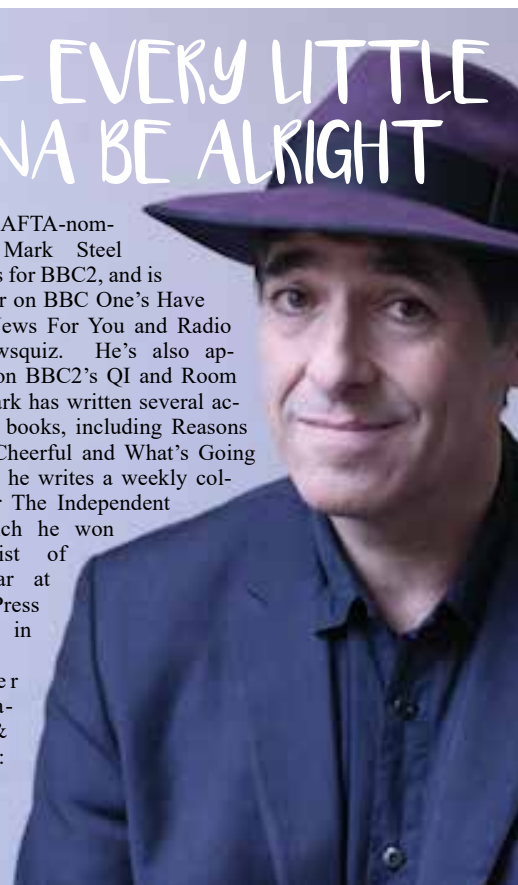
MARK STEEL - EVERY LITTLE THINGS GONNA BE ALRIGHT

Not long ago, it seemed highly unlikely the UK would vote to leave the EU; we had a reasonable opposition to the Tory Government; Donald Trump was a buffoon who surely wasn't going to beat Hilary Clinton; and Mark was living the married suburban ideal. A year later, it's all gone horribly wrong. But don't worry, as Mark thinks Every Little Thing's Gonna Be Alright.

Mark's sell-out show Who Do I Think I Am revealed that his natural father was a world backgammon champion. Now the star of Radio 4's Mark Steel's in Town, and newspaper columnist of the year, is back on the road with a new show, guaranteed to make the world seem even more mental than it is.

Mark has written and presented many series of Mark Steel's In Town on BBC Radio 4 (the eighth series is currently transmitting at 6.30pm on Tuesday evenings) and toured it live around the UK. Mark has presented

the BAFTA-nominated Mark Steel Lectures for BBC2, and is a regular on BBC One's Have I Got News For You and Radio 4's Newsquiz. He's also appeared on BBC2's QI and Room 101. Mark has written several acclaimed books, including Reasons To Be Cheerful and What's Going On, and he writes a weekly column for The Independent for which he won Columnist of the Year at the Press Awards in 2015. Further information & tickets: www.offthekerb.co.uk.



Think Big

If you're a small to medium sized business looking for a little support to make your next big investment, the loan fund available from Think BIG Loans may be of use to you.



Available to businesses in Newark and Sherwood with the ambition and potential to grow, the loan has already helped many businesses to take their next step.

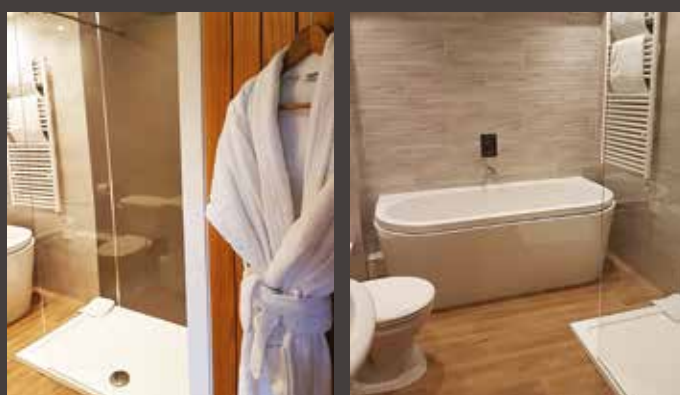
The Dovecote Inn, Laxton, is a prime example of the difference some financial support could make for your business.

The Dovecote Inn is a traditional country pub set in the unique and historic village of Laxton, England's last remaining medieval farming village. The Inn has been established over many years and has been managed by David and Linda Brown since May 2007. When they acquired the business only nine years of a 21 year lease remained from the Crown Estate remained. David became aware of the Newark and Sherwood District Council loan scheme through a conversation he had at a Parish Council meeting. In order to receive a loan David and Linda had to demonstrate how financial help could grow the business and not only safeguard, but generate more local jobs in the district.

A business plan was already in place to expand the business, improve the two letting bedrooms and create



a third letting bedroom from the derelict barn. The creation of the third letting bedroom would impact positively on the core business. In October 2016, the loan was agreed by the Think BIG panel to run over a three year term. David has been keen to recommend the Loan Fund to colleagues and explained that the process was "quick, simple and efficient and everything dropped into place."



Students Clear Rubbish for DofE Award

Local litter-picking students have been clearing rubbish in Southwell as part of their Duke of Edinburgh award.

The three students, Max Preece, Callum Stuckey and Lisandra Peña, had help from the waste management team at Newark and Sherwood District Council by acting as the group's assessors.

The litter-pick ticks off the groups' volunteering element of the award by spending 1 hour a week for 3 months collecting rubbish. They worked mostly in Southwell, but also visited Upton, Halam and Blidworth.

The boys used equipment kindly borrowed from Southwell Scouts and each week the bags of litter were collected by the council for safe disposal. Along the way the boys help discover and report three areas of flytipping.

Matt Adey the Assistant Manager in Waste Management acted as the groups Duke of Edinburgh Assessor and signed off their volunteering module of the award.

Matt said: "The group worked really efficiently and safely to collect and clear multiple areas affected by litter. They put in a great effort and we are grateful for the help they have provided."

If you are a parent manager of a local Duke of Edinburgh team and would like to consider litter picking for your group please get in touch using pr@nsdc.info. There is safety guidance on the district council website for anyone

interested in running a volunteer litter picking group. www.newark-sherwooddc.gov.uk/wasteandrecycling/ greatbritishspring-clean2018.





CLASSIC SHOWS

WWW.CLASSICSHOWS.ORG | INFO@CLASSICSHOWS.ORG | 01484 667776

KEY: Car Show Bike Show Autojumble & Trade

SUNDAY 8 JULY NEW EVENT

BELVOIR CASTLE CLASSIC CAR & MOTORCYCLE SHOW

A great day of entertainment and motoring heritage for the whole family, set upon the backdrop of Belvoir Castle.

Belvoir Castle Grantham, Leics, NG32 1PE

£: Adult: £8, Child (7-14): £3 Autojumble: Pitches from £15

Time: 10am - 4pm



SUNDAY 15 JULY NEW DATE

CLUMBER PARK CLASSIC CAR & MOTORCYCLE SHOW

Clumber Park Worksop, Notts, S80 3AZ

£: Adult: £8, Child (7-14): £3

Autojumble: Pitches from £15

Time: 10am-4pm



MONDAY 27 AUGUST

NOTTS CLASSIC CAR & MOTORCYCLE SHOW

Inc. the East Midlands Mini & VW Show

Thoresby Park Ollerton, Notts, NG22 9EP

£: Adult: £9, Child (7-14): £3

Autojumble: Pitches from £30

Time: 10am-4pm

EXHIBIT YOUR VEHICLE FOR £4.50 BOOKING DEADLINES AND T&CS APPLY

BOOK A TICKET AT WWW.CLASSICSHOWS.ORG OR PAY ON THE DAY



Commercial, Personal & Household
0121 422 2282
Specialist Vehicle & Multi Vehicle
0121 506 6040



KEEPING IT CLASSIC

New for 2018, leading classic vehicle event's organiser Classic Shows has announced an exciting new event at Belvoir Castle, Grantham taking place on Sunday 8 July 2018.

Ideal for vehicle enthusiasts, day trippers and families the event runs from 10am - 4pm and will feature over 300 vintage, classic and modern classic cars and motorcycles on display including a number of car club stands.

This family-friendly event also includes trade and autojumble stalls, quality food and drink and a full vehicle concourse and judging process overseen by an experienced commentator. Awards will be presented across a range of categories including Pride of Ownership, Club of the Show and culminating in the prestigious Car of the Show awards. All exhibitors will also receive a complementary commemorative plaque.

Visitors wishing to exhibit their vehicles can book by Friday 29 June to benefit from an admission price of just £4.50 per vehicle and this permits admission for up



to 2 adults and 2 children travelling in the exhibiting vehicle. Visitor tickets are available at just £8 per adult for all events (£9 Thoresby Park) and can be booked via the Classic Shows website or purchased on the day of the

event.

Classic Shows has run over 1,000 classic vehicle events over the past 30 years and has been operating events in the East Midlands for over 25 years, including hugely popular events at Thoresby Park, nr Ollerton (next event BH Monday 27 August) and more recently Clumber Park, nr Worksop (next event Sunday 15 July.)

For further information contact Classic Shows on info@classicshows.org, by phone on 01484 667776 or refer to the Classic Shows website at www.classicshows.org

The 8th STAVELEY ARMED FORCES & VETERANS ASSOC. EVENT

7th & 8th JULY 2018

AT POOLSBROOK COUNTRY PARK STAVELEY



FREE ENTRY

- Military displays
- Cadet Recruitment and Demonstrations
- Vintage Vehicles
- Rother Valley Newfoundland Dog Training Displays.
- Live Entertainment, in Garrison Theatre.
- Trade & Charity Stalls
- Parade from Staveley, Saturday am led by Long Eaton Silver Prize Band followed by opening service
- Remembrance Service, Sunday am
- Sergeant Major Marmite (of Dad's Army fame)
- Fly Past (tbc)
- RAW Brewery refreshment tent
- Parking at venue, for only £2
- Free Shuttle Bus From Staveley Healthy Living Centre & Speedwell Rooms
- Free Entry

For more details please contact any of the below

Event Secretary: Marion Gerrard on 07960 317894, email: marionjohn19@hotmail.com
Treasurer: Graham Weighill on 07757 007169, email: graham.weighill@virginmedia.com

OUT AND ABOUT

138th Derbyshire County Show



Tickets are available online by visiting derbyshirecountyshow.org.uk

Tickets are selling fast for this year's Derbyshire County Show and Food Fayre, which will remain at the stunning Locko Park in Spondon. The show will be held on Sunday, June 24th 2018 and is expected to attract thousands of people from across the region by showcasing the very best that the county has to offer. There will be plenty of old favourites at the 2018 show which will include livestock displays in the parade ring, heavy horses,

vin-tage cars and tractors, show jumping, light horses, craft stalls and floral displays. An RAF Spitfire will wow crowds with a flypast mid-afternoon while a giant screen will show the World Cup group match

between England and Panama from 1pm. There will also be a Food Hall at this summer's Show where visitors can purchase delicious produce, much of it produced in Derbyshire. As well as cheese and artisan bread, the Derbyshire County Show will also host the award-winning Nelson's Gin. Their gin is currently on the shelves in Harrods and Waitrose. And, to ease any traffic congestion,

organisers will run FREE buses to and from the show ground. Edward Hicklin, chairman of the Derbyshire Agricultural and Horticultural Society, said: "The county show has a very grand history stretching back to 1860 and we have a proud reputation to uphold; staging an event which has something for every member of the family and celebrates all that is good about the countryside on our doorstep. "We are working on some terrific elements for the 2018 show which will fulfil the vital function of bringing the countryside to life for young children and families."

DERBYSHIRE COUNTY SHOW & FOOD FAYRE

SUNDAY 24TH JUNE 2018

LOCKO PARK, SPONDON

DERBY DE7 4PQ



J.C. Balls Digger Dance

Pre-show Tickets
Adults £13.00
Senior citizens £9.00; Children £7.50

Show-day Tickets
Adults £13.00
Senior citizens £11.00; Children £8.00

Pre-show tickets available online or by writing to ...
Derbyshire County Show, 5 Willow Park Way, Aston on Trent, Derby DE72 2DF
For further information call
01332 793068 or visit our website www.derbyshirecountyshow.org.uk

For credit or debit card facilities please see website

Your Escape From...



Only £29,995

Funding options available

2011, Willerby Salisbury, 3-Bed

- Double Glazed /Central Heating
- Easy Let Options Available (We take care of everthing for you)
- No fees until 2019
- Choice of Pitches
- 45 Week Season Open Christmas & New Year
- Full Move in Inventory

Call - James Lunn
01754 896043 | 07564 678045

HORSES THROUGH THE AGES
A COSTUMED EVENT DEPICTING HOW HORSES HAVE BEEN WORKED THROUGH THE AGES

FEATURING EQUESTRIAN DISPLAYS & BIRDS OF PREY!
DOG AGILITY DEMO
PIPE PERFORMANCE
BONNIE CASTLE
STALLS, BBQ & TOPIA
LOTS OF ENTERTAINMENT

SUNDAY 24TH JUNE
GATES OPEN: 10:30 TO 15:30
£5.00 ADULTS & £3.50 CHILD/SENIOR

AT THE NORTHCOTE HEAVY HORSE CENTRE
A LINCOLNSHIRE ANIMAL WELFARE CHARITY

WWW.NORTHCOTEHORSES.COM

Northcote Heavy Horse Centre
Spilsby, Lincolnshire, PE23 5PS
07899815960 or 01754830286 - northcotehorses@gmail.com

DOGS ALLOWED WITH OWNERS RESPONSIBILITY & MUST BE KEPT ON A LEASH
SMALL PETS AVAILABLE - CALL 07899815960 TO BOOK - MUST BE BOOKED IN ADVANCE

HOLLOWELL STEAM 2018

32nd YEAR
AND HEAVY HORSE SHOW

7th & 8th JULY

40 STEAM ENGINES & 20 HEAVY HORSES

Miniature Steam : Bands
Tractors : Cars
Military : Lorries
Fair Organs : Fairground
Tea Tent : Market Stalls
Motorcycles : Barn Engines
Fire Engines : Buses

Reptiles : Birds of Prey
Hounds : Rifle Shooting
Working Area
Archery : Model Boats
Stilt Walkers : Model Tent
Pets Corner : Arts & Crafts
Childrens Entertainers



Find us just off the A5199 between J1 of the A14 & Northampton

SATURDAY ONLY:
AUCTION OF VINTAGE & COLLECTORS ITEMS
Gates open 9.00am
Adults £10 Children £5
O.A.P.'s £8 each day

SUNDAY ONLY:
FUN
DOG SHOW

For further details PHONE OR FAX on (01604) 505422 or VISIT OUR WEBSITE www.hollowellsteam.com



ORCHARD CARAVANS
Leading the way!

ORCHARD HOLIDAY PARK
WELLS-NEXT-THE-SEA
ON THE BEAUTIFUL NORTH NORFOLK COAST

Your very own **luxurious holiday home**
on our secure holiday park.

Visit- orchardcaravans.com for all the details

We also have **Lakeside Caravans** for hire close to the beach
Visit- holidaycaravansnorfolk.co.uk for all the details

tel: 01328-710394

 Plus New and Used Quality Caravans  

on our showground at:
Great Eastern Way, Wells-next-the-sea, Norfolk, NR23 1LY

A Country Celebration

Championing community spirit and honouring the rich heritage of Melton Mowbray, Paint the Town Red is a family-friendly, one day event filled with farming, country pursuits and fine food. The support of Melton Borough Council, Melton Mowbray Town Estate and local sponsorship means the event organiser has been able to provide a number of free attractions and demonstrations. Melton Building Society has sponsored the climbing wall on hire from Beaumanor Outdoor Learning Centre, not to mention The Melton BID, who have funded local artist Sue Bagshaw to provide a variety of art and crafts activities to keep little ones busy while the sun shines. Samworth Brothers have paid for a number of traditional crafters to come along and demonstrate their heritage and artisan crafts, including pole lathe turning. Keen to celebrate home-grown talent, the event will also be showcasing local food producers and crafters, as well as fundraisers, there to make a difference. Other attractions include the Birds of Prey on King Street and a few traditional fairground stalls, including a Coconut Shy and Ball in a Bucket on Nottingham Street. You may even be able to see the sheep and Shetland ponies, too! If you're planning on bringing your furry companion along on the day, be sure to head down to Sherrard Street, where there will be a number of classes, including 'The Waggiest Tail' and 'The Best 6 Legs'. Entries for all of the shows can be made on the day. Entertainment will be provided by pupils from Asfordby Hill Primary School and Performing Stars Academy amongst others, and be sure to keep your eyes peeled for The Green Man around town! With so much to see and do, Paint the Town Red is fun, educational and relaxing, making it the perfect day out for all ages. The event is being held on Sunday 24th June from 10am-4pm in Melton Mowbray Town Centre.




Even Bigger for 2018 season

AQUA PARK
RUTLAND.CO.UK

with more obstacles and new challenges

NOW OPEN

Great for individuals and Groups of all sizes. Exclusive use sessions available.








For tickets, vouchers and to check availability go to www.aquaparkrutland.co.uk

OUT AND ABOUT

A Wheely Good Time!

When the sun is shining and the children have broken up from school, The Belvoir Show is the perfect day out for the whole family to enjoy. With a vast array of working exhibits, stalls and activities, Wheels in the Field has plenty to keep all ages entertained. You can even bring along your fluffy four-legged companion for the dog show, with all proceeds going towards supporting the work of local charities. Marvel at the living history display and see stunning examples of classic and vintage cars and steam engines before taking part in one of the many off road activities available. Visitors on the day are sure to be delighted to learn that the Kesteven Ploughing Engines will be returning to the area.

The funfair is the perfect place for those young and old to let their hair down amongst the backdrop of our fair organs, which will be providing music to accompany the fun rides and activities. Once you've worked up an appetite, head to the bar and cool down with a refreshing drink before indulging in some tasty refreshments. The Lincolnshire cheerleaders will be performing across the weekend, infecting visitors with their lively spirit and impressing audiences with their performance skills. They will be also be joined by the talented Nottingham gymnastics club the Dako Flying Angels, who are sure to get the crowds cheering as they twist and turn, fly through the air and perform show-stopping moves in

perfect unison.

The Belvoir Show, Wheels in the Field, will take place on 28th-29th July and will be open between 10 a.m. - 4 p.m., meaning that there's plenty of time to cram tonnes into your day. With tickets just £5 for adults and £1 for children, there's really no excuse to miss out on this thrilling summertime event!

The event will be held at the Hook Cliffe Showground, Grantham, NG31 8NB

COSMO AUTHENTIC WORLD KITCHEN
EAT ALL YOU LIKE... FOR ONE SET PRICE

TAKE YOUR TASTE BUDS AROUND THE WORLD AND ENJOY OVER 150 DISHES FRESHLY PREPARED AT OUR LIVE COOKING STATIONS... COOK FRESH - EAT FRESH

NOTTINGHAM'S
ULTIMATE
WORLD BUFFET

LUNCH FROM
£8.99*

FAMILY FRIENDLY VENUE
KIDS HALF PRICE

DINNER FROM
£14.99*

*T&C's apply - see website

FIRST FLOOR, 29A MILTON STREET, NOTTINGHAM NG1 3EN (OPPOSITE JOHN LEWIS)

BOOK NOW: 0115 950 7755

www.cosmo-restaurants.co.uk www.facebook.com/CosmoNottingham

Adventure Guides

YMCA

YMCA Adventure Guides is all about strengthening bonds between parents, sons and daughters.

You will build strong family bonds during exiting expeditions and weekly circle activities!

Join our expedition

Summer camping expeditions available for all circles!

Discounted trips

We are proud to offer exciting expeditions at a reduced rate for families across Nottinghamshire.

Book now

with code **AG1**

nottsymca.com

0115 978 5809

HOLDING A LOCAL EVENT?

CALL 01159 314380



Ready For Adventure?

Nottinghamshire YMCA is taking families from the across the county on exciting camping expeditions with the YMCA Adventure Guides programme. YMCA Adventure Guides is all about strengthening bonds between parents and their children. Families plan their own shared adventures and experiences in tightly-knit groups. We call these groups 'circles'. Circles provide structure and a sense of community. As well as circle activities, families en-

gage with monthly expeditions, which can be anything from an evening of arts and crafts to a camping weekend in the great outdoors. Throughout summer 2018, YMCA Adventure Guides will be taking Nottinghamshire families on a variety of weekend camping expeditions designed to help build skills, friendships, and confidence in both children and parents. This year the YMCA Adventure Guides will be heading to: Holme Pierrepont Camping Expedition

(Family), Saturday 16 - Sunday 17 June
Beaumanor Hall Camping Expedition (Dads and Children Only), Saturday 14 - Sunday 15 July
Walesby Forest Camping Expedition (Family), Saturday 1 - Sunday 2 September
Expeditions are fully organised by Nottinghamshire YMCA. To find out more and to book places for you and your family, contact the YMCA Adventure Guides team on 0115 978 5809 or email adventure@nottsymca.org.

2018 BUBBLE RUSH

SUNDAY 8TH JULY OPENS 10.30AM STARTS 12PM

STOKE ROCHFORD HALL, GRANTHAM

5K OF FAMILY FROTHY FUN!

TICKETS
ADULT (16+) £25 standard
CHILD (5-15YRS) £15 standard,
 (UNDER 5'S GO FREE)
FAMILY - TWO ADULTS AND TWO CHILDREN £65 standard

Supported by **Lines FM**

For more information please contact Amelia Mochan
 E: amelia.mochan@stbarnabashospice.co.uk
 T: 01522 540 300
StBarnabasHospice.co.uk
 @StBarnabasLine StBarnabasLine

St Barnabas
 Hospice - Care - Support
 Registered Charity No. 1053814

STAINSBY

50th Festival
 20th - 22nd July 2018

Brunts Fields Stainsby Chesterfield S44 5RN

100% NOT FOR PROFIT VOLUNTEER RUN

www.stainsbyfestival.org.uk

Registered Charity 509610

Summer Events

at Little Ponton Hall Gardens

Friday, 17th August The Greatest Showman

This is your chance to see one of the most popular films of the year in the beautiful surroundings of the Little Ponton Hall Gardens. The Gardens will be open from 6pm before the show so pack a picnic and come and sing along! Tickets are limited so early booking is essential. We look forward to seeing you there!

Tickets from: www.ticketsource.co.uk/date/486038



Friday, 24th August Oscar Wilde's 'A Woman of no Importance'

Presented by DOT Productions.

"I can never repent. I would rather be your mother than pure - Mrs Arbuthnot

Lady Hunstanton's house party is in full swing when Gerald Arbuthnot is announced as secretary to the witty Lord Illingworth. However once Gerald's mother makes an appearance suddenly his future is uncertain. Should Mrs Arbuthnot tell her son the truth she has hidden all these years? Would Gerald and Society ever forgive her? After all, who would believe Lord Illingworth to be a man of no importance? Comic melodrama and social scandal bubble away in this classic Oscar Wilde satire. With a cast of 6 and DOT Productions renowned style, this dramatic comedy is guaranteed to delight. Doors open at 19:30-21:50
 Tickets available: www.ticketsource.co.uk/date/467072



If you require any further information on the events, please ring 01476 530216 or visit: www.littlepontonhallgardens.org.uk
 Little Ponton Hall, Little Ponton NG33 5BS

3 Nights Bed, Breakfast and Evening Meal

From Only
£120
 Per person

3 Nights Bed and Breakfast from only £90 per person

Palm Court Hotel, Skegness



www.palmcourtskegness.com

Telephone 01754 767711



John Eastwood Hospice Trust



John Eastwood Hospice trust working in partnership with Nottinghamshire Healthcare NHS foundation trust provide support and care for people with progressive incurable disease.

We offer:

- Outreach support into the community
- In-patient facilities
- Education
- Day therapies
- Spiritual and psychological support
- Support Groups
- Complementary therapy
- Volunteering opportunities



We rely on fundraising and volunteers to fulfill our commitments so all donations are greatly appreciated.



Tel: 01623 622626

**Mansfield Road • Sutton-in-Ashfield
Notts • NG17 4HJ**

1		2		3		4		5		6		7		8		9
										10		11			12	
13																
				14						15						
	16													17		
18																
19			20		21			22		23				24		25
													26			
27						28					29		30			
31	32				33					34				35		
								36		37						
38						39							40			41
	42		43			44	45					46			47	
48					49			50		51			52		53	
			54							55						56
													57			
58					59											
										60					61	

Microsoft
Technology
Associate

NWNSBERS.ACROSS: 1 Code 3 Smart 10 Heave 12 Luck 13 Pzeal 14 Lunch 15 Lascency 16 Pearl 17 Hop 18 Item 19 Term 20 Candy 21 Dazzle 22 Snel 23 Scordon 30 Unlidy 31 Thigh 32 Nerve 33 Pump 34 Shale 35 Sunset 39 Excute 40 Infant 42 Hunt 43 Gape 44 Handed 45 Cretel 46 Flank 47 AnnSWERS DOWN: 1 Cape 2 Doozer 3 Stomach 4 Abandon 5 Tilt 6 Chill 7 Never 8 Pwylr 9 Drop 10 Across 11 Rind 20 Jump 21 Calamity 22 Yarn 23 Loot 25 Medal 26 Juvenile 28 Canoe 29 Noise 32 Laugh 35 Defec 36 Shop 37 Dent 41 Type 43 Nothing 45 Oyster 46 Bramble 48 Happy 49 Bump 50 Adult 51 Seald 52 Gloom 53 Prise 56 Dock

Property

Your Perfect Home



Boasting over 20 years of service, award-winning UK lettings & estate agents, Belvoir Newark is on-hand to help with all your housing needs. Whether you're an experienced landlord, a first time seller or you're looking to rent or buy; the range of services on offer and expert knowledge will help make the process a little easier, getting you onto the property ladder.

With over 170 locally-managed offices nationwide, Belvoir can provide you with the best service and advice to suit your needs and requirements, no matter your situation.

Want your property valued? If you're looking to sell or you're

just interested in how much your property might be worth, the best way to get an accurate and detailed understanding of your property is through a free, quality, one-to-one appraisal with one of the experienced Belvoir agents. Request a stress-free appraisal with your local office via the Belvoir website.

Looking to move? Get all the best tips and tricks in the online guides for first-time buyers and renting or pop into your local branch for an informal chat with our friendly and professional staff. Easy to read agreements for tenants and landlords ensure that you fully understand the process of selling or buying a property

along with transparent fees, making your experience with Belvoir an easy one.

We are members of ARLA Propertymark, which means we meet higher industry standards than the law demands. Our experts undertake regular training to ensure they are up to date with best practice and complex legislative changes so that they can offer you the best advice. We are also backed by a Client Money Protection scheme, which guarantees that your money is protected.

Visit www.belvoir.co.uk for more information or to find your local branch

BELVOIR!

Call 01636 686262
Email: newark@belvoir.co.uk
www.belvoir.co.uk/newark

TOWN & COUNTRY COLLECTION

Express your individuality with the

23 BEAUTIFUL NEW HIGH QUALITY 2, 3 & 4 BEDROOM HOMES WITH GARAGES

Greendale Gardens
Watnall Road, Hucknall, NG15 6EP

Help to Buy

ONLY 5% DEPOSIT WITH GOVERNMENT SUPPORTED SCHEME. †

Oakdale HOMES
BUILT FROM THE HEART

For further information tel. 0115 963 2095 or call freephone 08000 288 838. Show home and sales centre open Saturday and Monday 11am-5pm Sunday 1pm-5pm. oakdalehomes.co.uk

† House prices based on the national property price index of the UK. Oakdale Homes Ltd. (11/16) All other conditions apply. See website for full details.

A Langley Holdings Company

MOVE INTO A NEW HOME IN COLLINGHAM THIS SUMMER

First Time Buyers NO STAMP DUTY TO PAY on houses up to £200,000

NO STAMP DUTY TO PAY on the first £125,000

Special offers on selected plots

Local developments currently in:

Boston New plots available for the first time

Corby

Doddington

Oakham

Whittlesey

Choice of purchase options including Part Exchange and Help to Buy. (Please see sales office and ask for details)

Help to Buy

Collingham Brook
Swinderby Road, Collingham, Newark NG23 7PH
Telephone: 07403 324104 Sales offices open 10am-5pm Thur to Mon
Prices and information correct at time of going to print. *Excluding apartments

Chellenham (5 bedrooms) from £200,000

Windsor (3 bedrooms) from £208,995

Nottingham (3 bedrooms) from £204,995

3, 4 and 5 bedroom homes Prices from £208,995

Oakdown (4 bedrooms) from £208,995

Thirsk (5 bedrooms) from £209,995

Better, because we care

LarkfleetHomes

www.larkfleethomes.co.uk 07843 324104

MIKES MOBILITY CENTRE



For all your Mobility needs

We are located inside Wilkinsons Mall, Main Street, Bulwell, Nottingham.

We sell mobility scooters, powerchairs, wheelchairs, walkers and all other day to day aids.

If you can't get to us, We'll come to you!

0115 9752562 or 07899 871331

Get £50 off any scooter over £500 with this advert (valid until June 2018)



NOW OPEN

Ruddington Manor is a stunning, state-of-the-art care facility with an exceptional clinical offering, including residential, nursing and respite care services.

The purpose-built care home provides stylish, comfortable, cosy yet practical home-from-home accommodation for elderly people who are finding it increasingly difficult to remain in their own homes.

Ruddington Manor has 66 fully furnished bedrooms, each with an en suite wet room. Residents are encouraged to personalise their own bedrooms with pictures, ornaments and soft furnishings, so that they feel right at home.

There are several inviting communal lounges and elegant dining rooms, as well as spa assisted bathrooms, a hairdresser and nail bar, beautifully landscaped gardens and a terrace to the first floor.

The talented and dedicated team at Ruddington Manor provide professional, compassionate person-centred care to each and every resident, enhanced by purposeful daily activities, encouraging independence where possible and building confidence.

Now open, Ruddington Manor is a lovely and luxurious care home located in the charming village of Wilfred.



**For further information please contact
Dawn Collett on 0115 981 5956 or email
enquiries@newcarehomes.com**

**RUDDINGTON
MANOR CARE CENTRE**
RUDDINGTON GARDENS,
RUDDINGTON,
NG11 7HL
WWW.NEWCAREHOMES.COM

PRIME COMFORT

GRANTHAM

TRAVEL IN
STYLE WITH
THE NEW
CABIN CAR

Probably the most advanced, luxurious and distinctive 8mph mobility scooter on the market today.

Finance Available

Free Insurance | Free Servicing | Free Gift Bag



 sandpiper
WIDE FITTING SHOE STOCKIST

Mobility Scooters · Wheelchairs · Power Chairs · Riser Recliners · Comfy Footwear · Stairlifts · Profiling Beds · Mattresses
Rollators · Shopping Trolleys · Sanitary Wear · Walking Sticks and great prices!

You'll just love Prime Comfort

1 Market Place | Grantham | NG31 6LQ | Telephone 01476 560044 | www.primecomfort.co.uk

OPEN: MONDAY - FRIDAY: 9am - 4.30pm



Care,
Health and
Wellbeing



FREE
Georgia toilet & basin
on any bathroom order
with this advert



Bathing a problem? - we can help

Wet rooms • Walk in showers • Walk in baths • Slip resistant safety flooring • Grab rails, shower seats & raised toilets • Established family business

we design • we supply • we fit • we care

Discounts for over 60's SSAFA & Ex-Service personnel

AHM Installations
SPECIALISTS IN BATHROOM ADAPTATIONS

Call now to arrange a **FREE**
survey & quote Nottingham

0115 9361804

info@ahminstallations.co.uk | www.ahminstallations.co.uk

Showroom: Unit 26, Flexspace Lincoln, Roman Way, South Hykeham, Lincoln, LN6 9UH Open Mon - Fri 10am - 2pm Sat by appointment



Checkatrade.com



Head above Water

Just like the family that runs it, AHM Installations is a business that won't falter under pressure. Set up 18 years ago by Julie and Simon Symcox, the business began selling mobility scooters and stairlifts.

When enquires about mobility bathrooms began to flood in though, they decided to implement these into their business, until the demand grew so much that it became their focal selling point. A recent flood within

the business was a temporary setback, but it is now running smoothly again and operating out of a new site in Lincoln.

Specialising in bathroom adaptations for the elderly and disabled, AHM Installations can provide wet rooms, walk in showers, walk in baths, automatic toilets, high raised toilets, grab rails and shower stools.

Every customer receives a free bathroom survey and a no obligation quote, as well as free advice

on available government grants. Those that choose AHM Installations can also rely on trustworthy tradesmen who will share their vast knowledge and expertise of bathroom and wetroom installations every step of the way.

The business has showrooms in Lincoln, Kent, Stratford upon Avon and Somerset. To find out more about AHM Installations, visit their website at <https://www.ahminstallations.co.uk/> or call them on 0800 7316495.

Correct Hearing TotalCare

The Correct Hearing TotalCare initiative has now been introduced, as we believe our clients should know what they are entitled to when we've fitted them with hearing aids. Whilst many providers say they will look after their clients for the lifetime of their hearing aids, what this includes is not always specified. TotalCare sets out clearly everything you can expect over the four year period following the fitting of your aids.

In fact, at Correct Hearing we say that we don't sell hearing aids – we provide a hearing healthcare service. We are passionate about the wellbeing of people in our community and we want to make sure that we deliver an outstanding and comprehensive service that no one else can match.

This is why we have introduced our TotalCare scheme. When you trust us with your hearing healthcare, TotalCare is our 'promise to deliver' and your 'peace of mind'. TotalCare includes many benefits that you will not get from any other provider. You will have check-ups every six months and annual full assessments. Things like batteries and ear wax removal may not involve any additional cost (depending on the level of technology you buy). The manufacturer's warranty may be extended up to 4 years - depending on what hearing aids you are fitted with - without additional charge. TotalCare also includes a Correct

Hearing unique self-funded insurance scheme to cover accidental loss or damage, and a generous scheme for early replacement of hearing aids should you wish to upgrade to better technology at any time.

We will also enrol you onto a scheme that gives you access to discounts and special offers for many high street stores, saving you hundreds of pounds each year! For those who choose a hearing aid from our TotalCare Premier Range we are also introducing the Correct Hearing Premier Club. Members will be entitled to a number of exclusive benefits, which will be made available at various times of the year.

You may also have spotted our new logo. We've had the old one for eight years and decided it was about time for a change. I think that you will agree that this is much cleaner and more modern. We have done this as it reflects our desire to constantly improve. However, the tick is still there!

Correct Hearing is an independent, community-based hearing healthcare practice and TotalCare is another area where our service goes beyond just the sale and fitting of hearing aids.

To find out more or to make an appointment
phone 0115 961 8351
or email info@correcthearing.co.uk
stating if you would like either a 15-minute screening or a full hearing assessment.

Also now at Optique of Southwell, 30 King St, Southwell, NG25 0EN. Tel: 01636 816255

 **Correct Hearing**



OVER 60? Book a full hearing assessment for June/July and get a **£15 M&S voucher**
Please quote NIF123 when making your appointment

Correct Hearing TotalCare



Why not come and talk to us about your hearing healthcare need and we can tell you all about TotalCare!

At Correct Hearing we are passionate about what we do and want to have a relationship with people in our community who trust us to provide a total hearing healthcare service. Apart from assessing, testing and fitting hearing aids, we now see lots of people coming to us for ear wax removal, often having been referred by their GP. We also advise and support people with Tinnitus or other hearing healthcare issues.

We believe that hearing is a

precious gift that needs to be looked after. We therefore, test people in our community free of charge. If they have hearing loss, we have a range of solutions we can recommend to enable them to hear better. Being independent we deal with all the major manufacturers of hearing devices, and therefore can always find the right solution to suit each individual.

We also believe that hearing aids are just tools in the hands of the audiologist. Without a proper as-

essment of someone's lifestyle and expectations; without thorough testing and the right choice of device; without proper fitting and follow up, hearing aids are useless. It is also vitally important that clients have access to ongoing support and routine service for the years after they have been fitted. This is why Correct Hearing is launching TotalCare, a unique four-year comprehensive hearing healthcare plan that sets out everything we promise to deliver over that period.



Sherwood Forest Hospitals' Recognised for Stroke Care



The latest figures which rate NHS Trusts for the way they handle patients suspected of having a stroke were announced last week and Sherwood Forest Hospitals remains in the top 10 hospitals in the country for delivering stroke care.

The Trust is top in the East Midlands for recognising and treating patients who have had a stroke and has the seventh highest score in the country out of 140 Trusts, after being given an A rating by the Sentinel Stroke National Audit Programme (SSNAP.)

Stroke Nurse Specialist, Emma Gillies said: "It is brilliant that we have main-

tained our A rating and continue to be one of the best in the East Midlands for delivering stroke care. We are all really proud of the care that we give to our patients and it is so pleasing to see that we have continued to progress and build on our high standards."

The audit is carried out quarterly and this is the fourth time that the team has remained at the top of the score board. The team comprises of; stroke consultants, thrombolysis nurses, stroke nurse specialists, ward nurses, ward doctors, physiotherapists, occupational therapists, speech and language therapists, clinical psychologists, clinical audit assistants, emergency department staff, early supported discharge, members of the discharge team, radiographers, clinical pharmacy, dieticians and East Midlands Ambulance Service, all of whom are among the best when it comes to assessing potential stroke patients and ensuring they receive swift and appropriate treatment and follow-on therapy.

Sherwood Forest Hospitals NHS Foundation Trust provides acute healthcare services for 420,000 people across Mansfield, Ashfield, Newark, Sherwood and parts of Derbyshire and Lincolnshire.



For all your Mobility needs

We are located inside Wilkinsons Mall, Main Street, Bulwell, Nottingham.

We sell mobility scooters, powerchairs, wheelchairs, walkers and all other day to day aids.

If you can't get to us, We'll come to you!

0115 9752562 or 07899 871331

Get £50 off any scooter over £500 with this advert (valid until June 2018)

Chetwynd House, Chilwell's New Luxury Care Home



For award-winning, affordable luxury residential & dementia care, call Claire on 0115 6979767



PINDERS
Design Award Winning
Care Home 2018

a superb place to live or work **adeptcarehomes**

June 2018
#lovetolearn

Festival of Learning

NOTTINGHAM:27-28 SEPT. & 28-29 NOV. 2018
(at: Park Inn, Mansfield Road, Nottingham, NG5 2BT)

Learn how to take blood ...

TRAIN AS A PHLEBOTOMIST

Introduction to Phlebotomy - TWO DAY COURSE -



- First step onto Allied Healthcare Career Path
- Accredited (Advanced)
- No previous experience needed
- Nationally recognised

ocn
Credit Learning
ACCREDITED

For more info. or to book online:

www.geopace.com

HIGH DEMAND IN: Hospitals - GP Surgeries - Clinics - Private Sector - Community

IF YOU
WOULD
LIKE
TO
FEATURE
ON
THIS
PAGE
PLEASE
CALL
US

01159

313879

LEARNING FOR LIFE

Festival of Learning is the biggest celebration of life-long learning in England. The national annual campaign, led by Learning and Work Institute and supported by the Department for Education, celebrates the outstanding achievements of individuals, employers and learning provision.

On Tuesday 12 June, 35 winners and highly commended nominees were revealed at the Festival of Learning National Awards Ceremony in central London. These inspiring stories highlight how learning benefits individuals, their families, the communities they live in and the places they work. Winners and highly-commended nominees were selected for various awards such as learning for work, social impact, learning for health, tutors, employers and innovative projects. Alongside the awards, Festival of Learning's Have a Go Month runs through the whole of June and aims to encourage more adults and families to participate in learning. Hundreds of free taster events, open days, online courses and talks are hosted by learning providers across the country. There are currently over 600 free learning events regis-



tered on our online calendar, which are taking place across the country throughout the month of June.

Stephen Evans, Chief Executive at Learning and Work Institute said: "Festival of Learning is all about inspirational stories of people who show that anyone can benefit from learning. Lifelong learning is vital for all of us as jobs and society change around us."

We encourage everyone to give learning a try, particularly in June when hundreds of free activities can be found on our Have a Go Month calendar. Further information on learning opportunities and support with the costs of courses is available through the National Careers Service, colleges and community learning providers."

To find out more about the award winners and for more information on Have a Go Month, visit the Festival of Learning website: www.festivaloflearning.org.uk



NOTTINGHAM COLLEGE

PART-TIME STUDY AT NOTTINGHAM COLLEGE

HOBBY
COURSESPROFESSIONAL
ACCREDITATIONSDEGREE-LEVEL
QUALIFICATIONS

COURSES STARTING FROM SEP 2018

0115 9 100 100 | nottinghamcollege.ac.uk/part-time



Learning the Lingo

If you're off on your holidays this summer, I'm sure you have thought about what to pack, from your favourite summer wear to sun cream, sunglasses and your trusted pair of flip flops – but have you readied your Spanish phrases? With Spain being such a popular holiday destination located right on our doorstep, we should take the time to embrace

the fantastic culture and learn some phrases, whether you want to become a fluent Spanish speaker or would prefer a general understanding of the local lingo – Language Tuition Nottingham have got you covered. The short and practical beginner's lessons will have you learning handy phrases in a fun environment, perfect for

impressing your fellow holiday-goers when you order your dinner or ask for directions to the beach. For those Spanish students who want to improve their fluency, sign up for the 'Keep Your Spanish Going' classes to discover a whole new world of tenses, vocab and opportunities to test your skills before your well-deserved break.



Planning your next holiday?

Enquire about classes today on 0115 9580197 or email info@languagetuitionnottingham.co.uk.



The Robert Carre Trust

OPEN DAY Wednesday 4th July 2018

Open for visits from 9.15am-12.30pm and 6pm-8.30pm

Wednesday 17th October 2018 (9.15am-12.30pm)
(appointments are not required)

Carre's Grammar School

- Top performing boys' grammar school in Lincolnshire
- Excellent pastoral care and support for children with SEND
- Academic success combined with sport, music, art and much more
- Links to local community via sport, outreach and partner primary schools



OPEN DAY Thursday 4th July 2018

Open for visits from 9.15am-12.30pm and 6pm-8.30pm

Wednesday 17th October 2018 (9.15am-12.30pm)

Kesteven & Sleaford High School

- Students made more progress at GCSE in 2016 than in any other grammar school in Lincolnshire
- Outstanding academic success year after year at KS3, GCSE and A Level
- Students learn as members of a friendly, welcoming and creative community
- Excellent pastoral care and support for students with SEND
- Wide range of extra-curricular groups for all year groups



To see more about our exciting schools please visit our websites



Carre's Grammar School
Part of the Robert Carre Trust
Executive Headteacher:
Mr N Law, Northgate, Sleaford
NG34 7DD
t: 01529 302181
e: enquiries@carres.uk
w: www.carres.uk



Kesteven & Sleaford High School
Part of the Robert Carre Trust
Head of School: Mrs J Smith
Jermyn Street, Sleaford
NG34 7RS
t: 01529 414044
e: enquiries@kshs.uk
w: www.kshs.uk



What we do

We are a Construction Training Company, accredited to CPCs, CSkills, EUSR, City & Guilds and National Plant. We offer practical and classroom training in all aspects of Plant, NRSWA, Confined Space and Safety Training.

Who we are

Allenby Training are a family run business having worked within the Construction Industry for the past 18 years. Together with our team of highly trained instructors/assessors and advisors we have successfully trained and built a strong client base of candidates that come back time and again as the needs of the industry change and qualifications need updating.

Our aims

We aim to offer the best possible training within the construction industry. To ensure that you are offered the best advice and given the correct training to keep you employed and up to date with current legislation - our success is measured by your success!



We provide a wealth of training /tests and NVQs for the construction industry including:

- CPCs Accredited Centre
- NPORS Accredited Centre
- NVQs Level 2-6 in Construction & Plant
- CSCS Touch Screen Tests
- City & Guilds NR&SW - Initial Training & Re-Assessments
- City & Guilds Confined Space including Level 5 Management
- EUSR Water/Gas qualifications
- Site Safety Plus - SMSTS - SSSTS - SEATS
- CITB Health & Safety Awareness Labourers Qualification
- Plant Training
- Bespoke Training
- Abrasive Wheels
- Manual Handling
- First Aid
- Health & Safety Consultants



Call us on 01522 548559

23 Crofton Road, Allenby Industrial Estate, Lincoln LN3 4NL
Allenby Training Services Limited, Plotwood Stables, Thorney Road, Wigsey NG23 7ER

www.allenby-training.co.uk

Lincoln's leading training provider for the Construction Industry



Spanish Holiday COURSES

WOULD YOU LIKE TO LEARN SOME SPANISH BEFORE YOUR HOLIDAYS?

These are short and practical beginner level courses.

But if you speak some Spanish and your goal is to improve your fluency over the summer, or to try our classes before committing to our longer courses, then

JOIN OUR "KEEP YOUR SPANISH GOING" COURSES.

For more information call: 0115 958 0197 / 07583194017
or email us: info@languagetuitionnottingham.co.uk

WWW.LANGUAGETUITIONNOTTINGHAM.CO.UK



June 2018
#lovetolearn

Festival of Learning



TUTORS WANTED

**We are a company specialising
in quality educational provision**

Due to increasing demand, we are looking to recruit excellent tutors, teachers, teaching assistants, youth workers and learning mentors who are willing to work on a sessional basis. Applications are welcome from practitioners across all Key Stage, curriculum areas and those who have worked successfully with young people in a range of settings. An ability to work flexibly is essential and a willingness to travel reasonable distances is expected. We offer generous rates of pay and the opportunity to work within a friendly and supportive team who really make a difference to the educational outcomes of young people out of school.

Please complete an application which can be downloaded from our website: www.first-class.org.uk or contact us on 01623 429484 or 01636 626171 for further details

A Career in Law

School pupils from across Nottinghamshire investigated a mock crime scene at Nottingham Trent University as part of a programme to inspire youngsters to explore a career in law.

Pupils in Year 12 and 13 took part in a range of activities including visiting the crime scene training facility at the university's Clifton Campus, collecting evidence from a mock crime scene, analys-

ing evidence in a lab and watching a mock court case unfold.

The event was part of the Pathways to Law programme, a national initiative funded by the Sutton Trust and The Legal Education Foundation, which aims to widen access to the legal profession to sec-

ondary school students who are traditionally under-represented in this industry.

The Nottingham Pathways to Law programme is delivered by Nottingham Trent University School's Colleges and Community Outreach department and the University of Nottingham.



OUT-OF-CATCHMENT INFORMATION EVENING

Tuesday 3 July 2018, 7.00pm-8.00pm



Choosing the right school for your child is one of the most important decisions a parent has to make.

Toot Hill School in Bingham is an outstanding* secondary school, which works in close partnership with its family of local primary schools to provide a great educational experience for all children.

If your child is currently in Year 4 or 5 and you would like to find out more about Toot Hill, we invite you to attend our Information Evening on Tuesday 3 July for out-of-catchment pupils and parents.

Toot Hill School, The Banks, Bingham, Nottingham NG13 8BL
Telephone: 01949 875550 | Website: www.toothillschool.co.uk

*Ofsted 2012



**"Goodbye" and "Good luck" to our GCSE students,
it's been a real pleasure working with you!**



Starting next week we're offering FREE intro sessions to Spotlight's 'FLYING START' programme.

From now until end of summer term.

For students who need to be pushing to improve their skills and grades now - ready for next year.

Ring me, Suzanne, on 07855 392166 for more details or to book your FREE session to boost results next year

"If you want to get a grade 5 or above you've got to start now"

At Coddington Community Centre, Beckingham Road, Newark, NG24 2TP

First 10 bookings can have 25% discount on next 4 sessions

www.spotlightonlearning.co.uk





Peggy's Skylight, Nottingham's newest musical dining experience, has announced its summer launch date.

Launched by musicians Rachel Foster and Paul Deats, the venue, on George Street, will be open to the public from Friday 24 August.

Works have now begun on transforming the space into a vintage New York and Middle Eastern inspired jazz bar, with interiors reminiscent of jazz great Duke Ellington's famous journey from New York to Damascus in 1963. Once complete, locals can expect a stunning space featuring exposed brickwork coupled with quirky antiques and beautiful lighting. Commenting on the launch, owner, Rachel Foster, said: "It's been a long time coming but we're so pleased to be in the venue now. We had a few

set-backs along the way and had to postpone the original launch date but we're so excited to finally be able to get to work on making this dream a reality and showing everyone just what Peggy's has to offer." Joint owner Paul Deats added: "The support we've received since we first announced we would be launching Peggy's Skylight has been truly phenomenal. It's so good to see that Nottingham is as excited as we are about this venture and we really can't wait to show you all what we've been working on."

Once open, Peggy's Skylight promises to be a fusion of well-curated live music coupled with heart-warming food with a Middle Eastern twist. Although predominantly a jazz bar, it

will also showcase live music with a soul and blues influence. There will also be lunchtime afternoon tea sessions accompanied by live piano music.

The Peggy's Skylight team will also be launching a kick-starter campaign next month to raise money for a grand piano at the venue.

To follow the progress of Peggy's Skylight in the run up to the launch and find out more about how to get involved with the kickstarter campaign, visit the venue's social media pages - @peggyskylight on Instagram and on Facebook - www.facebook.com/peggyskylight

Nottingham hospitals' staff to do their own 'take' on BBC Two Hospital programme, in charity fundraising event for Nottingham Children's Hospital

Showing they not only have the ability to manage one of the toughest winters on record for the NHS, hospital staff from Nottingham's hospitals are now showcasing their talents for the charity cabaret event of the year.

On Saturday 23 June the Nottingham Playhouse will host the

Ooo!

amazing "Ooo Factor" show where the full, unexpurgated talents of NHS staff in Nottingham will be on display.

With a line up ranging from performing porters and theatrical theatre staff, to singing anaesthetists and comic consultants, there is guaranteed to be something for everyone in the show which is in aid of the Big Appeal for Nottingham Children's Hospital.

Orthopaedic Consultant Tony

Westbrook has produced the show along with colleague Dan Armstrong. Tony will be putting his coordination skills to good use to comper the evening and is incredibly proud of his colleagues: "What you'll see in the show are the true Hospital staff, the fun and fantastically talented people behind the uniforms! It's a show that has something in it for absolutely everyone."

Tickets for this unique show are still available at £16.50, bookable from the Nottingham Playhouse www.nottinghamplayhouse.co.uk.

For more information about Nottingham Hospitals Charity, please go to www.nottinghamhospitalscharity.org.uk

HOSPITAL



Moana Joining The Disney On Ice Team

Audiences will set sail with Moana as she makes her European debut live on ice in Disney On Ice presents Dream Big. This all-new production, produced by Feld Entertainment, assembles a collection of inspiring stories connected by a cast of characters with a desire to explore their dreams.

Alongside Moana and demi-god Maui are eight tales of courage and heart, including Frozen, Beauty and the Beast, Aladdin and Tangled. Plus, arrive early to celebrate 90 years of Walt Disney's "true original," Mickey Mouse. The production will stop off for eight shows at the Motorpoint Arena Nottingham 21-25 November 2018.

Travel to the kingdom of Arendelle with Anna, Elsa and Olaf in a dramatic retelling of the sisterly love that saved a kingdom. Jump into amazing adventures with Aladdin as he seizes his chance to outwit his adversaries in the marketplace of Agrabah. Battle the villain Maleficent in the form of a fire-breathing dragon alongside Prince Phillip, igniting the ice in a blazing spectacle. Dive under the sea with headstrong Ariel as she

years to explore life above the waves.

"Disney On Ice presents Dream Big was created with the intention to inspire everyone to explore their world by highlighting the defining moments of relatable characters who became their own heroes," says Executive Vice President and Producer Nicole Feld.

Tickets can be purchased online at [www.motorpointarena-](http://www.motorpointarena-ena-)



nottingham.com/online/disney-on-ice via 0843 373 3000 or in person at the Motorpoint Arena Box Office.

Tickets on sale Friday 29 June

An exclusive venue pre-sale will take place from 9am on Friday 22 June. Customers wishing to obtain priority tickets will need to sign up to the Motorpoint Arena Nottingham Mailing List by 23:59 on Thursday 21 June www.motorpointarenanottingham.com/online/createAccount.asp

Disney ON ICE



TOM BROWNS ANNUAL SUMMER JAM
SUN 1ST JULY

OUTSIDE GARDEN PARTY 1PM-7PM
FUN FOR ALL THE FAMILY

LIVE MUSIC | KIDS ENTERTAINERS | BBQ
GAMES | BOUNCY CASTLE | KIDS CRAFTS
OUTSIDE BAR | ICE CREAM | COCKTAIL BAR

ADULTS £5 CHILDREN £2.50
UNDER 2'S FREE
CALL VENUE TO BOOK NOW!

DJ STUART HEMULEN
(JAM CAFE)

TOM BROWNS
Celebrating 30 YEARS

TOM BROWNS BRASSERIE, TRENTSIDE, GUNTHORPE, NOTTINGHAM, NG14 7FB
0115 966 3642 | WWW.TOMBROWNS.CO.UK

Home Improvements

OVEN AND COOKER REPAIRS

Competitive prices on all repairs with no hidden extra costs
TRY US OUT - WE COVER...

**£5
OFF**

ALL REPAIRS
IF YOU MENTION
THIS ADVERT

QUOTE 'NIF' WHEN
YOU CALL OR EMAIL

- Elements
- Fan Motors
- Grill Elements
- Door Seals & Hinges
- Controls
- New Glass
- Hobs Repaired & Installed

**SAME DAY RESPONSE & REPAIR
BY EXPERT ENGINEER**

ONE HOUR QUOTE
Provide your make & model number

NO CALL OUT CHARGE

**ALL REPAIRS COME WITH
SIX MONTH GUARANTEE**

ALL MAKES AND MODELS ARE COVERED AND CAN BE FIXED

Tel: 07952 026495

Email: info@ovenrepairs4u.co.uk | www.ovenrepairs4u.co.uk

HARVEYS TREE SERVICE AND LANDSCAPING

SPECIALISE IN LOW MAINTENANCE GARDENS

SPRING OFFER

35% OFF WITH THIS ADVERT

*Call within 24 hours of receiving this advert

**HEDGES & SHRUBS
LOWERED, TRIMMED,
SHAPED & TIDIED**

**FREE HEALTH
CHECKS FROM STORM
DAMAGED TREES**

**NEW PATIOS, PATHS
& DRIVEWAYS**

**ALL TYPES OF TREES LOPPED,
TOPPED, PRUNED & FELLED**

TREE REDUCTIONS

**STUMP KILLING &
WASTE REMOVAL**

**PATIOS & DRIVEWAYS
CLEANED & SEALED**

Over 25 years' experience

CALL TIM ON

0800 959 6384 / 0115 871 9763

SPECIAL RATES FOR OAP'S, 14 DAY COOLING OFF PERIOD

Great for:
Space Saving
Kerb Appeal
Ease of Use

valuedoors uk
the nations favourite door company

THERMALLY INSULATED ELECTRIC GARAGE DOORS!



Value Doors can save a lot of space inside your garage. Rolls up vertically into a box. Takes only 8 inches of headroom! Opens vertically so you can park up close to the door. Remotely open/close the garage even from inside your car.

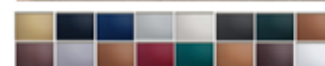
Acoustic & Thermal Insulation

Brush Sealed Rails & Thermal Insulation

No Deposit, Pay on Completion

18 Colours Available

FREE DISPOSAL OF OLD DOOR!



**SAVE
£459!**

LIMITED OFFER - was £1354

NOW ONLY £895 Inc. vat, Full Fitting!

MADE TO MEASURE, CALL US TODAY!

Exclusive Deal
please quote "VD895"

0115 882 8992
Phone Lines open 7 Days a Week

- offer valid for openings up to 2.6m wide & inc: 2 remote keys, 55mm white slats, internal manual override -

Omega windows & doors™

**Manufacturers & installers of
quality UPVC Windows & Doors**



**Call
now for
20%
off**

- Conservatories
- Patios & Bi-Folds
- Soffits & Fascias
- Small Building Works
- Orangeries

**Specialising in flush
facing sash windows
Suppliers of Supalite
Tiled Roof System**



Unit 9, Alfred Street South,
Nottingham NG3 1GE

T: 07771 567812

T: 0115 7617982

E: tmfraser1966@hotmail.com



BEFORE

IMPROVING HOMES

Getting Hands On



If your home needs a little TLC, spring is the perfect time to make those changes, from some new decorations or a different colour scheme to a lick of paint or a furniture revamp – transform your home ready for summer.

In this day and age people don't tend to bother with DIY with the most trying task, more often than not, being flat-pack furniture. Whilst most residents have resigned themselves to being hopeless around the house, here are a few simple ways to change your surroundings without having to dig out the toolbox.

A lick of paint is perfect for brightening up a dull space, get a group of friends together and have a paint party for a fun and quick way to spruce up your home. Whether it's your living room, bedroom or the kid's playroom – a new colour makes a bold statement. Cover your furniture,

roll up your sleeves and get creative! Head to your local department store

Upcycling is the new big thing! Why throw away your old furniture, materi-

als and bits and bobs when you can make new, stylish things from their parts? Give an old chest of drawers a lick of paint and take out the drawers to make it a stylish sideboard or dressing table, storage units can be made into chairs, dressers and so much more

with a new splash of colour. You could even put old furniture in the garden for a funky, colourful garden accessory.

or furniture shop to pick up some new lush accessories to decorate your home. From fluffy cushions and sparkly picture frames to plants and other furnishings, revamping your home can be as easy as a trip to the shops.



COSYREST FURNISHINGS LTD

If you want the best, come to Cosyrest

Re-upholstery in Nottingham, UK

Cosyrest Furnishings Ltd is a well established soft furnishings and reupholstery business based in Stapleford, Nottingham.

We offer a range of high quality soft furnishings. We are makers of fine suites and reupholstery specialists and will take on most jobs.

At Cosyrest Furnishings Ltd we pride ourselves on our high quality products, from car seats and headboards to the reupholstery of sofas; no job is too big or too small. We have been in business for almost 40 years; we have plenty of experience and have built up a strong client base.

Some of the services we offer are:

• Reupholstery • Fine suites • Contract work

Why should you choose Cosyrest Furnishings Ltd?

• High quality products • Friendly and professional service
• Tailor made soft furnishings • Competitive prices
• Excellent quality product for the price • Willing to take on any job

Here at Cosyrest Furnishings Ltd we are proud members of the Association of Master Upholsterers.



For reupholstery services, call us now on
0115 939 0099
www.cosyrest.co.uk



Special Weekly Offers



Bargains Galore



54 Wood Lane • Hucknall • Nottingham • NG15 6LR
Tel: 0115 963 2300

New Timber, Reclaimed Timber, Sand & Aggregate, Natural Paving, Block Paving, Reclaimed Bricks, Reclaimed Slates.

No VAT to pay on any items

Nice friendly staff and more

Season Spas UK
Hot Tubs - Swim Spas & Accessories

2 AMAZING FAMILY HOT TUBS
in stock
Designed in the UK

Model: SunStorm
Size: 2150 x 1800 x 800mm
Balboa Controls: 2kw heater
Shell: USA acrylic
£2299

Model: Moonshine
Size: 2250 x 1800 x 785mm
Balboa Controls: 2kw heater
Shell: USA acrylic
£2599

Both Hot tubs come with
13amp Plug N Play
Top Cover, Twin Filter, LED Lights
x1 3HP Pump, x1 Circulation Pump
Full R10 Insulation & More

FREE PARKING OPEN 6 DAYS A WEEK
Mansfield:- 66 11 11
Units 3 - 3A Hallam Way, Old Mill Lane, Mansfield Woodhouse NG19 9BG

17 HOT TUBS ON DISPLAY

Model: Wild Coast
Size: 2280 x 2280 x 940mm
Balboa Controls: 3kw heater
Shell: USA Aristech acrylic
£4359

Hot Tub Steps
£69

Cover Lifters
£129

Bubbles Bathrooms NOW WITH OVER 75 BATHROOMS ON DISPLAY

Monday - Saturday
9.30 - 5pm
Sunday 10 - 4pm
Closed Tuesdays

Chrome & White Towel Warmer
22mm from
£19.99
All Sizes Available upto 1800mm High

Luxury Double Ended Baths
1700mm Round or Square from
£1119

We Supply Fit & Design

Bubbles Bathrooms Unit 3 Hallam Way Old Mill Lane Mansfield NG19 9BG 01623 66 1111

ELVASTON STEAM RALLY

SUPPORTING LOCAL CHARITIES

**7 & 8
JULY**



SATURDAY: 9AM - 6PM SUNDAY: 9AM - 4.30PM
ELVASTON CASTLE COUNTRY PARK, DE72 3EP

Adults £10 • Accompanied Children FREE
(Unaccompanied Children £5) • 4pm-6pm Saturday All Classes £5

WHY NOT CAMP WITH US FOR THE WEEKEND?
SEE WEBSITE FOR MORE DETAILS.

**FREE PARKING FREE BUSES FROM DERBY,
HEANOR & ILKESTON**

For Caravan and Camping information ONLY call 07969 264879

Enquiries: Box ESR, 3 The Chase, Kilburn, Belper, Derbys. DE56 0PL. Tel: 07504 045197

www.elvastonsteam.co.uk

Catering and Fairground Concessions already let. Details correct at time of printing.